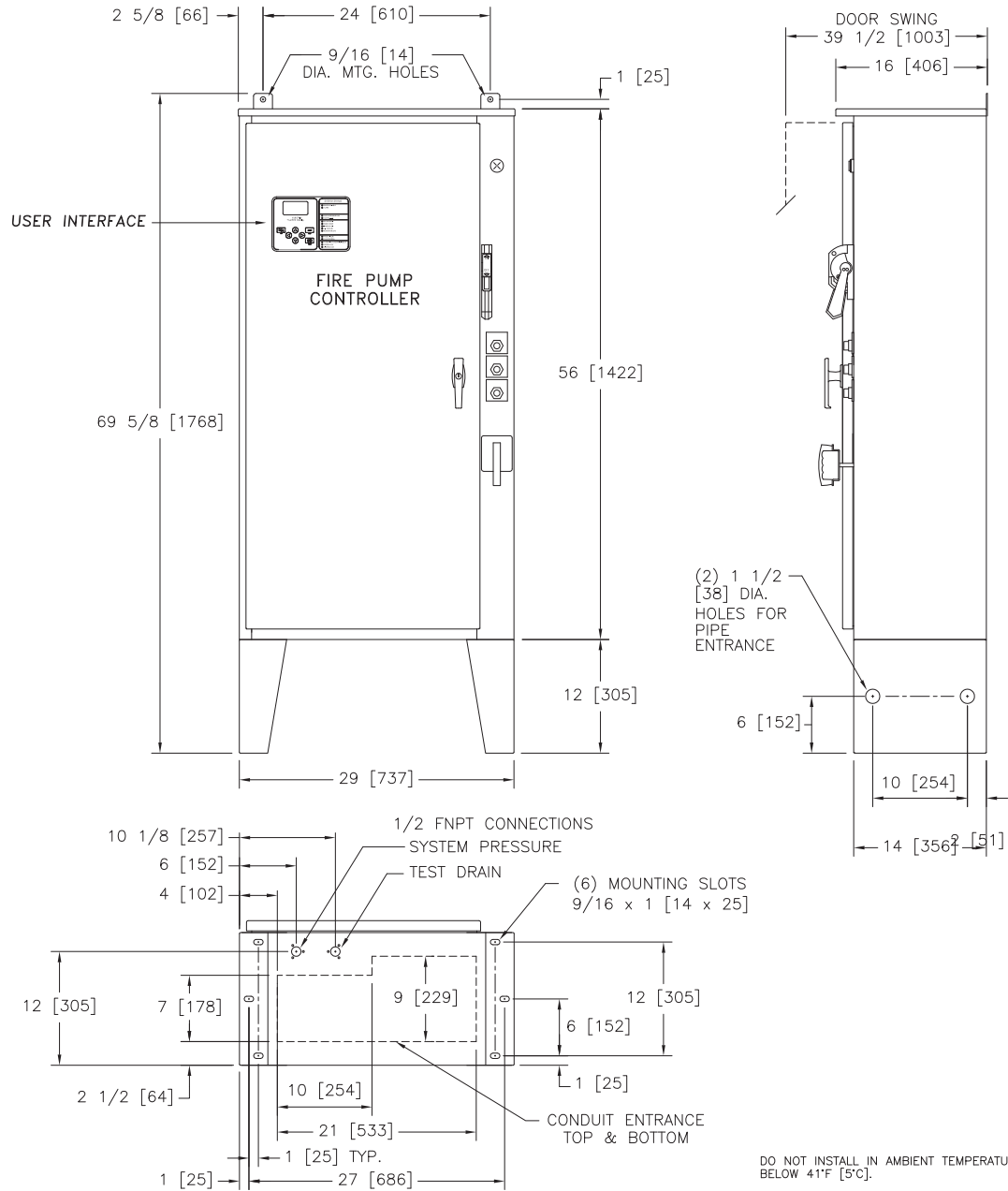




Mark IIxG Electric Fire Pump Controllers

Dimensions and Shipping Weight FTA1000 Across The Line Starting



STANDARD WITHSTAND RATINGS
200-600V - 100,000 Amps RMS Sym.

INTERMEDIATE WITHSTAND RATINGS
200-600V - 150,000 Amps RMS Sym.

HIGH WITHSTAND RATINGS
200-600V - 200,000 Amps RMS Sym.

LINE VOLTAGE	MOTOR HORSEPOWER
200	□ 75-100
208	□ 75-125
220-240	□ 75-125
380-415	□ 125-200
440-480	□ 200-250
550-600	□ 200-300

**APPROXIMATE
SHIPPING WEIGHT**

235 [107]

DO NOT INSTALL IN AMBIENT TEMPERATURES
BELOW 41°F [5°C].

ALL DIMENSIONS - INCHES [MM]
SHIPPING WEIGHT - POUNDS [KG]

THIS DIMENSION DRAWING COVERS FTA1000
CONTROLLERS AT THE HORSEPOWER, VOLTAGE
AND WITHSTAND RATINGS AS LISTED IN THE
TABLE. FOR OTHER HORSEPOWER OR
WITHSTAND RATINGS, REFER TO ED1000-02

SPECIFICATIONS AND DIMENSIONS SUBJECT TO
CHANGE WITHOUT NOTICE. DO NOT USE FOR
CONSTRUCTION. REQUEST CONSTRUCTION
DRAWINGS FROM FIRETROL OR YOUR LOCAL
FIRETROL REPRESENTATIVE.

THIRD ANGLE PROJECTION	SIZE A	BY	DATE
DRAWN BY	TEF	07-23-02	
FINAL APPROVAL	TEF	07-23-02	



© Firetrol, Inc. Not for construction.
Subject to change without notice.

UPDATED TITLE BLOCK	D	280404	JMW	TEF	08-19-19
REVISED MOTOR HORSEPOWER CHART	C	237364	JMW	TEF	05-31-12
REVISION DESCRIPTION	REV	ECN NO	BY	APP	DATE
DIMENSIONS & SHIPPING WEIGHT	FTA1000				
FULL VOLTAGE FIRE PUMP CONTROLLER	DD1000-55				
DWG REV D	ECN NO 280404	SHEET 1 OF 1			

All rights reserved. The drawing and the information contained or depicted herein are the sole property of Firetrol, Inc. Copies are communicated to the recipient in strict confidence and may not be retransmitted, published, reproduced, copied or used in any manner, including as the basis for the manufacture or sale of any products, without the express prior written consent of Firetrol, Inc.