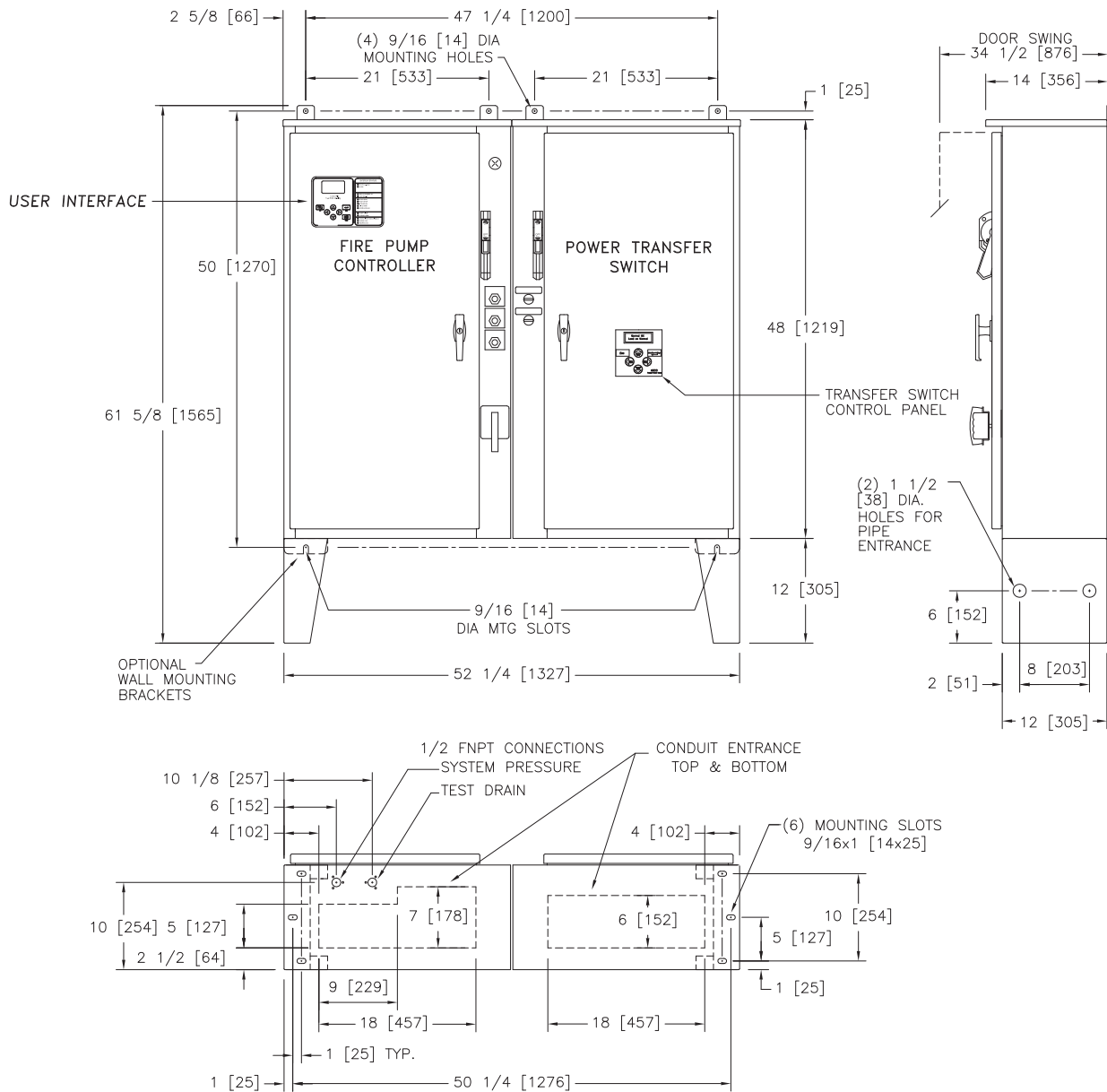




Mark IIxG Electric Fire Pump Controllers

Dimensions and Shipping Weight FTA1000/950

Across The Line Starting
With Power Transfer Switch



DO NOT INSTALL IN AMBIENT TEMPERATURES
BELOW 41°F [5°C].

ALL DIMENSIONS — INCHES [MM]
SHIPPING WEIGHT — POUNDS [KG]

THIS DIMENSION DRAWING COVERS FTA1000
CONTROLLERS AT THE HORSEPOWER, VOLTAGE
AND WITHSTAND RATINGS AS LISTED IN THE
TABLE. FOR OTHER HORSEPOWER OR
WITHSTAND RATINGS, REFER TO ED1000-02

SPECIFICATIONS AND DIMENSIONS SUBJECT TO
CHANGE WITHOUT NOTICE. DO NOT USE FOR
CONSTRUCTION. REQUEST CONSTRUCTION
DRAWINGS FROM FIRETROL OR YOUR LOCAL
FIRETROL REPRESENTATIVE.

STANDARD WITHSTAND RATINGS	
200–600V — 100,000 Amps RMS Sym.	
INTERMEDIATE WITHSTAND RATINGS	
200–600V — 150,000 Amps RMS Sym.	
HIGH WITHSTAND RATINGS	
200–600V — 200,000 Amps RMS Sym.	
LINE VOLTAGE	MOTOR HORSEPOWER
200	□ 3–60
208	□ 3–60
220–240	□ 3–60
380–415	□ 3–100
440–480	□ 3–150
550–600	□ 3–150

APPROXIMATE
SHIPPING WEIGHT
495 [225]

THIRD ANGLE PROJECTION	SIZE A	BY	DATE
DRAWN BY	TEF	06-19-02	
FINAL APPROVAL	TEF	06-19-02	



© Firetrol, Inc. Not for construction.
Subject to change without notice.

UPDATED TITLE BLOCK		C	280404	JMW	TEF	08-19-19
ADDED COMPONENTS TO MEET FM REQUIREMENTS		B	228499	JC	TEF	08-10-10
REVISION DESCRIPTION		REV	ECN NO	BY	APP	DATE
DIMENSIONS & SHIPPING WEIGHT		FTA1000 WITH FTA950		DRAWING NUMBER		
FULL VOLTAGE FIRE PUMP CONTROLLER WITH POWER TRANSFER SWITCH				DD1000-61		
		DWG REV	C	ECN NO	280404	SHEET 1 OF 1

All rights reserved. The drawing and the information contained or depicted herein are the sole property of Firetrol, Inc. Copies are communicated to the recipient in strict confidence and may not be retransmitted, published, reproduced, copied or used in any manner, including as the basis for the manufacture or sale of any products, without the express prior written consent of Firetrol, Inc.