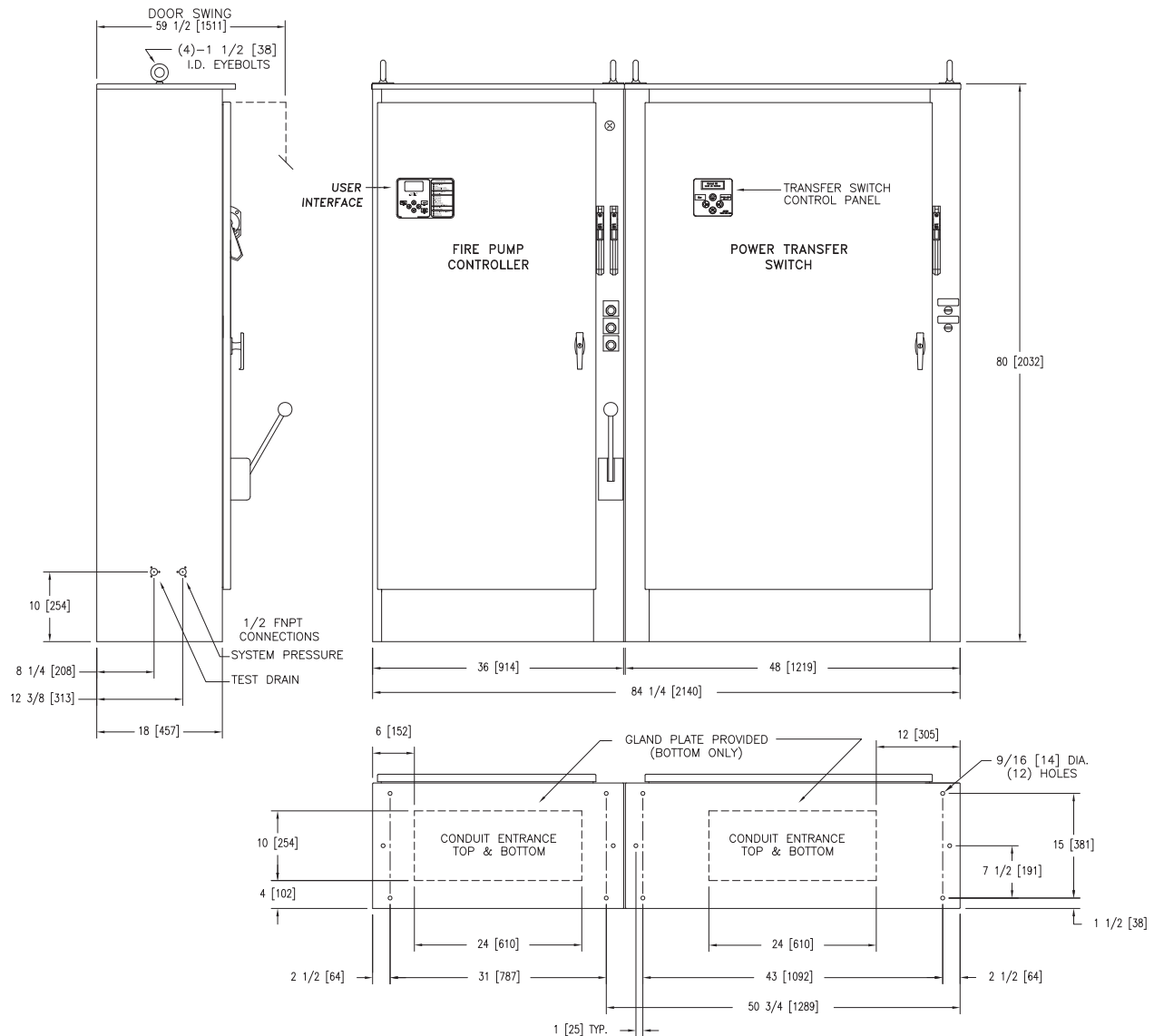




Mark IIxG Electric Fire Pump Controllers

Dimensions and Shipping Weight FTA1000/950

Across The Line Starting
With Power Transfer Switch



	STANDARD WITHSTAND RATINGS 200–600V 100,000 Amps RMS Sym.	STANDARD INTERMEDIATE WITHSTAND RATINGS 200–480V 65,000 Amps RMS Sym.
	INTERMEDIATE WITHSTAND RATINGS 200–600V 150,000 Amps RMS Sym.	STANDARD LOW WITHSTAND RATINGS 550–600V 42,000 Amps RMS Sym.
	HIGH WITHSTAND RATINGS 200–600V 200,000 Amps RMS Sym.	
LINE VOLTAGE	MOTOR HORSEPOWER	MOTOR HORSEPOWER
200	□ 125–200	□ 250
208	□ 150–200	□ 250
220–240	□ 150–250	□ 300
380–415	□ 250–350	□ 400–500
440–480	□ 300–500	□ 600
550–600	□ ---	□ ---

APPROXIMATE SHIPPING WEIGHT
1500 [680]

DO NOT INSTALL IN AMBIENT TEMPERATURES BELOW 41°F [5°C].

ALL DIMENSIONS – INCHES [MM]
SHIPPING WEIGHT – POUNDS [KG]

THIS DIMENSION DRAWING COVERS FTA1000 CONTROLLERS AT THE HORSEPOWER, VOLTAGE AND WITHSTAND RATINGS AS LISTED IN THE TABLE. FOR OTHER HORSEPOWER OR WITHSTAND RATINGS, REFER TO ED1000–02

SPECIFICATIONS AND DIMENSIONS SUBJECT TO CHANGE WITHOUT NOTICE. DO NOT USE FOR CONSTRUCTION. REQUEST CONSTRUCTION DRAWINGS FROM FIRETROL OR YOUR LOCAL FIRETROL REPRESENTATIVE.

	SIZE A	BY	DATE
	DRAWN BY	TEF	07-24-02
	FINAL APPROVAL	TEF	07-24-02



© Firetrol, Inc. Not for construction.
Subject to change without notice.

UPDATED TITLE BLOCK		E	280404	JMW	TEF	08-21-19
REVISED MOTOR HORSEPOWER CHART		D	237364	JMW	TEF	08-21-19
REVISION DESCRIPTION		REV	ECN NO	BY	APP	DATE
DIMENSIONS & SHIPPING WEIGHT		FTA1000 WITH FTA950		DRAWING NUMBER		
FULL VOLTAGE FIRE PUMP CONTROLLER WITH POWER TRANSFER SWITCH				DD1000-65		
DWG REV		E	ECN NO	280404	SHEET A OF A	

All rights reserved. The drawing and the information contained or depicted herein are the sole property of Firetrol, Inc. Copies are communicated to the recipient in strict confidence and may not be retransmitted, published, reproduced, copied or used in any manner, including as the basis for the manufacture or sale of any products, without the express prior written consent of Firetrol, Inc.