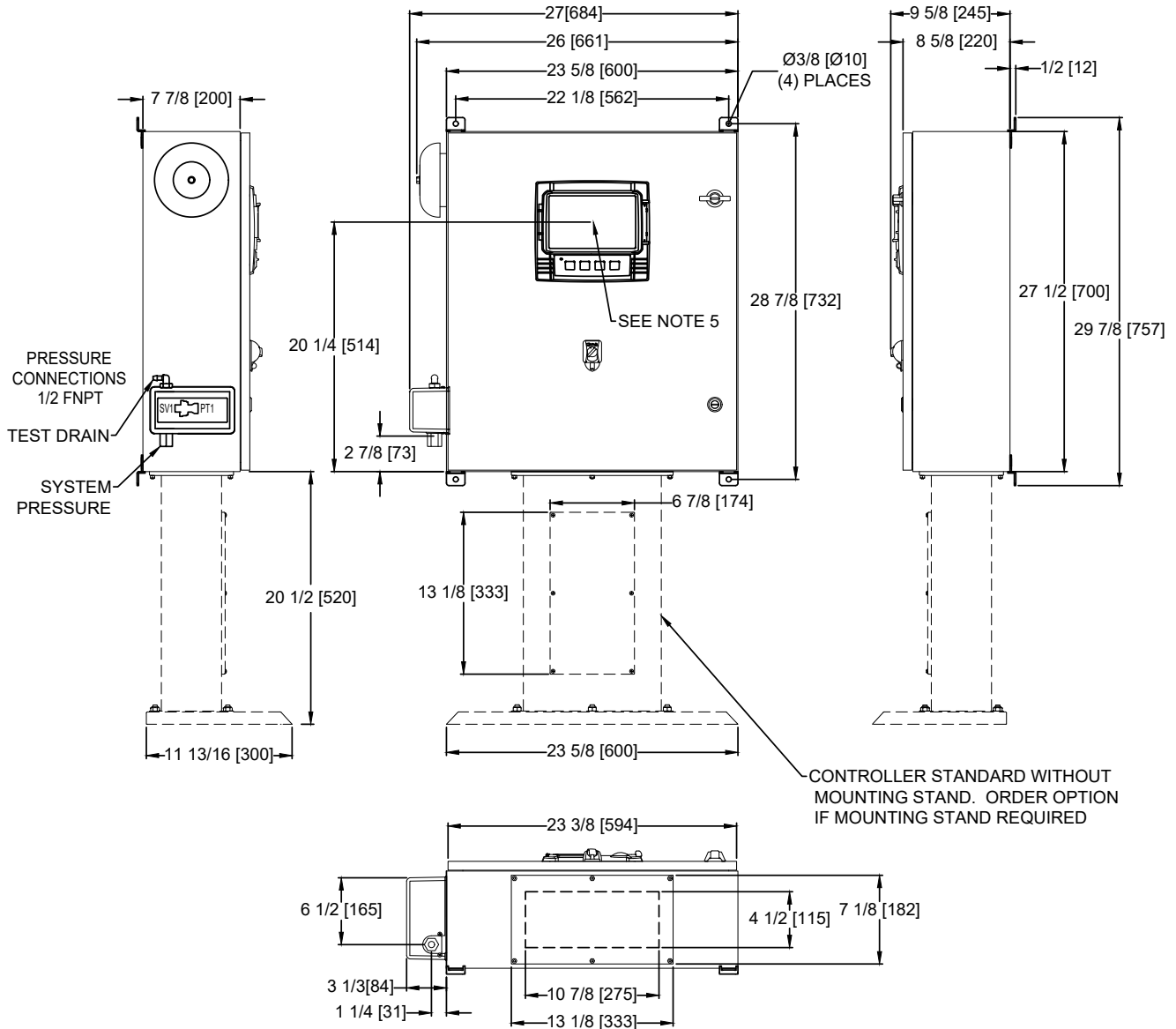


Dimensions and Shipping Weight



FTA1100J

MARK^{III} Diesel Engine Fire Pump Controller



NOTES:

1. STANDARD: NEMA 2
2. STANDARD PAINT: TEXTURED RED RAL3002
3. ALL DIMENSIONS IN INCHES [MILLIMETERS]
SHIPPING WEIGHT IN POUNDS [KG]
4. CENTER OF MARK III SCREEN: 20-1/4" FROM BOTTOM W/O FEET
5. BOTTOM CONDUIT ENTRANCE THROUGH REMOVABLE GLAND PLATE RECOMMENDED
6. USE WATERTIGHT CONDUIT AND CONNECTOR ONLY
7. PROTECT EQUIPMENT AGAINST DRILLING CHIPS
8. DOOR SWING EQUAL TO DOOR WIDTH
9. DRAWINGS USED FOR CONSTRUCTION PURPOSES MUST BE OBTAINED FROM FIRETROL OR THE LOCAL FIRETROL REPRESENTATIVE

APPROXIMATE SHIPPING WEIGHT
115 [52]

	SIZE	A	BY	DATE	<p>© Firetrol, Inc. Not for construction. Subject to change without notice.</p>	REVISED DIMENSION		C	-	CIR	CIR	6-11-21
	DRAWN BY	JMW	11-04-19	REVISION DESCRIPTION		REV	ECN NO	BY	APP	DATE		
	FINAL APPROVAL	CIR	11-04-19	DIMENSIONS AND SHIPPING WEIGHT		FTA1100		DRAWING NUMBER				
	DIESEL ENGINE FIRE PUMP CONTROLLER		12VDC OR 24VDC NEGATIVE GROUND			DD1100-30			DWG REV	C	ECN NO	-