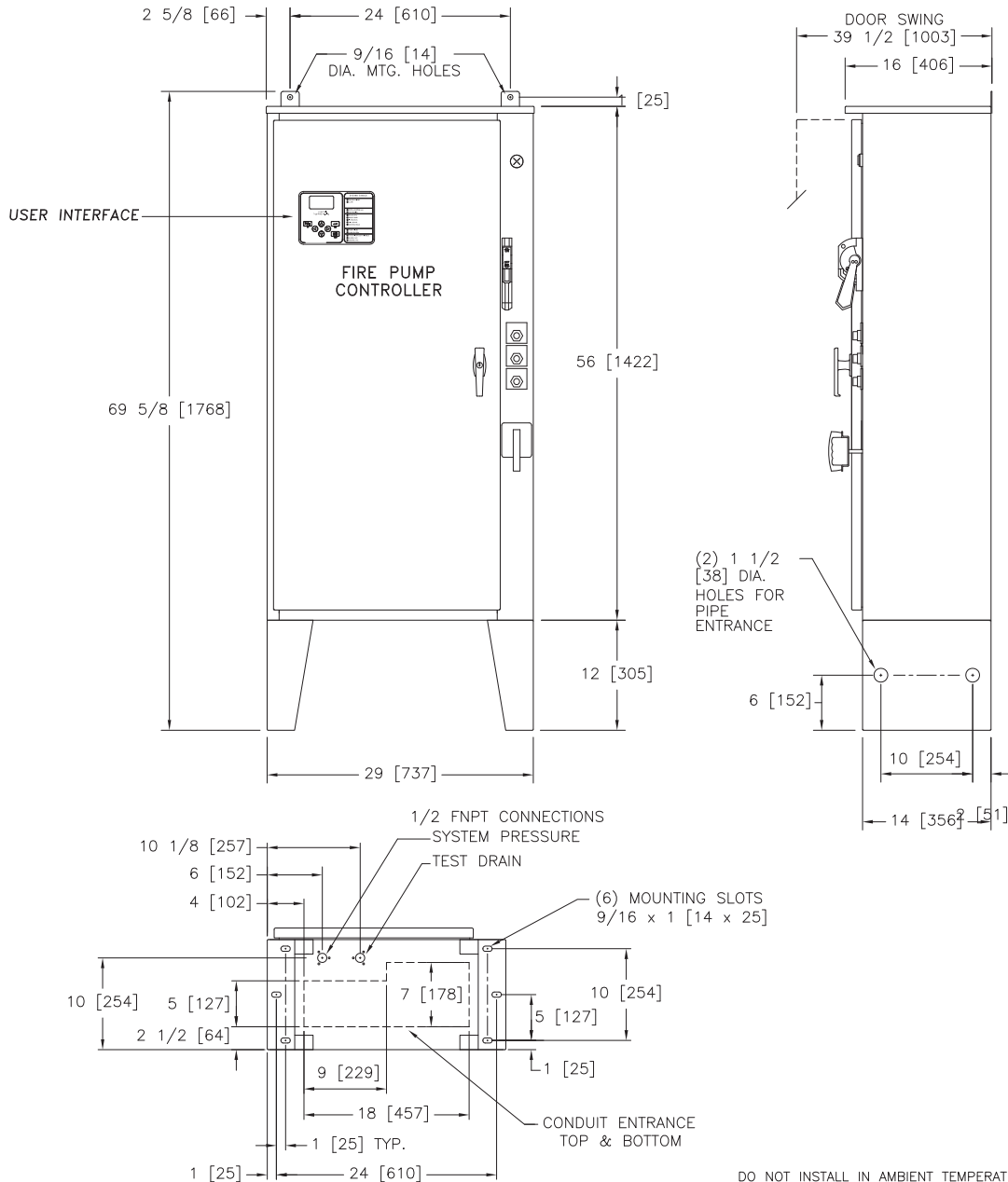




Mark IIx6 Electric Fire Pump Controllers

Dimensions and Shipping Weight FTA1250 Part Winding Starting



DO NOT INSTALL IN AMBIENT TEMPERATURES BELOW 41°F [5°C].

ALL DIMENSIONS - INCHES [MM]
SHIPPING WEIGHT - POUNDS [KG]

THIS DIMENSION DRAWING COVERS FTA1250 CONTROLLERS AT THE HORSEPOWER, VOLTAGE AND WITHSTAND RATINGS AS LISTED IN THE TABLE. FOR OTHER HORSEPOWER OR WITHSTAND RATINGS, REFER TO ED1250-02

SPECIFICATIONS AND DIMENSIONS SUBJECT TO CHANGE WITHOUT NOTICE. DO NOT USE FOR CONSTRUCTION. REQUEST CONSTRUCTION DRAWINGS FROM FIRETROL OR YOUR LOCAL FIRETROL REPRESENTATIVE.

STANDARD WITHSTAND RATINGS	
200-600V	- 100,000 Amps RMS Sym.
INTERMEDIATE WITHSTAND RATINGS	
200-600V	- 150,000 Amps RMS Sym.
HIGH WITHSTAND RATINGS	
200-600V	- 200,000 Amps RMS Sym.
LINE VOLTAGE	MOTOR HORSEPOWER
200	□ 75-100
208	□ 75-125
220-240	□ 75-125
380-415	□ 125-200
440-480	□ 200-250
550-600	□ 200-300

APPROXIMATE SHIPPING WEIGHT
310 [141]

UPDATED TITLE BLOCK		D	280598	JMW	TEF	09-04-19
REVISED MOTOR HORSEPOWER CHART		C	237364	JMW	TEF	05-31-12
REVISION DESCRIPTION		REV	ECN NO	BY	APP	DATE
DIMENSIONS & SHIPPING WEIGHT		FTA1250		DRAWING NUMBER		
REVISED MOTOR HORSEPOWER CHART		DD1250-55				
DWG REV	D	ECN NO	280598	SHEET 1 OF 1		

THIRD ANGLE PROJECTION	SIZE	A	BY	DATE
	DRAWN BY	TEF	07-23-02	
	FINAL APPROVAL	TEF	07-23-02	



© Firetrol, Inc. Not for construction. Subject to change without notice.