

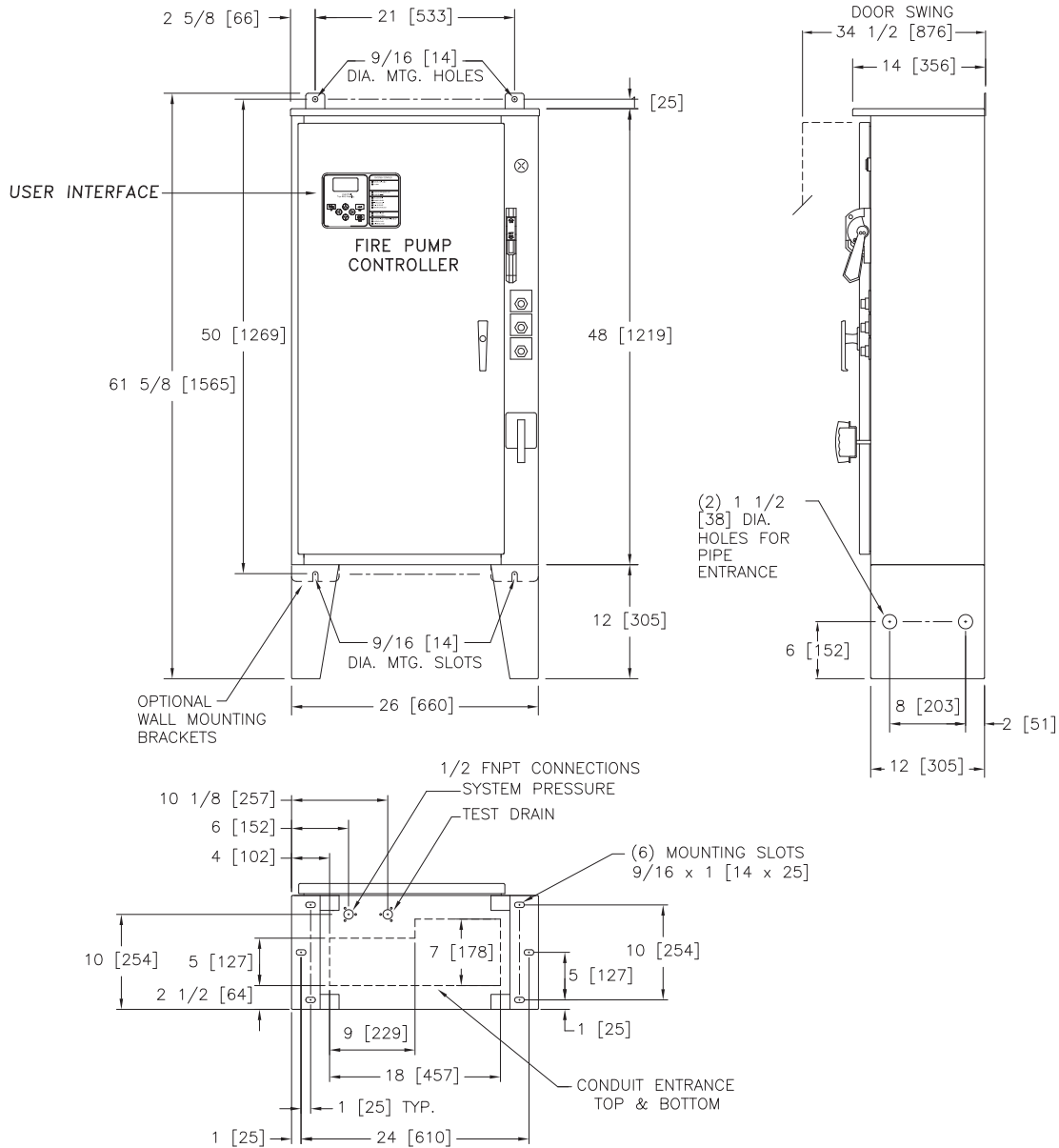


Mark IIx6 Electric Fire Pump Controllers

Dimensions and Shipping Weight

FTA1300

Wye-Delta Open Transition Starting



STANDARD WITHSTAND RATINGS	
200-600V	100,000 Amps RMS Sym.
INTERMEDIATE WITHSTAND RATINGS	
200-600V	150,000 Amps RMS Sym.
HIGH WITHSTAND RATINGS	
200-600V	200,000 Amps RMS Sym.

LINE VOLTAGE	MOTOR HORSEPOWER
200	□ 3-60
208	□ 3-60
220-240	□ 3-60
380-415	□ 3-100
440-480	□ 3-150
550-600	□ 3-150

APPROXIMATE SHIPPING WEIGHT
270 [122]

DO NOT INSTALL IN AMBIENT TEMPERATURES BELOW 41°F [5°C].

ALL DIMENSIONS - INCHES [MM]
SHIPPING WEIGHT - POUNDS [KG]

THIS DIMENSION DRAWING COVERS FTA1300 CONTROLLERS AT THE HORSEPOWER, VOLTAGE AND WITHSTAND RATINGS AS LISTED IN THE TABLE. FOR OTHER HORSEPOWER OR WITHSTAND RATINGS, REFER TO ED1300-02

SPECIFICATIONS AND DIMENSIONS SUBJECT TO CHANGE WITHOUT NOTICE. DO NOT USE FOR CONSTRUCTION. REQUEST CONSTRUCTION DRAWINGS FROM FIRETROL OR YOUR LOCAL FIRETROL REPRESENTATIVE.

UPDATED TITLE BLOCK		C	280820	JMW	TEF	09-11-19
ADDED COMPONENTS TO MEET FM REQUIREMENTS		B	228550	JC	TEF	08-10-10
REVISION DESCRIPTION		REV	ECN NO	BY	APP	DATE
DIMENSIONS & SHIPPING WEIGHT		FTA1300		DRAWING NUMBER		
OPEN TRANSITION WYE-DELTA FIRE PUMP CONTROLLER				DD1300-51		
DWG REV		C	ECN NO	280820	SHEET 1 OF 1	

SIZE	A	BY	DATE
DRAWN BY	TEF	07-03-02	
FINAL APPROVAL	TEF	07-03-02	



© Firetrol, Inc. Not for construction. Subject to change without notice.