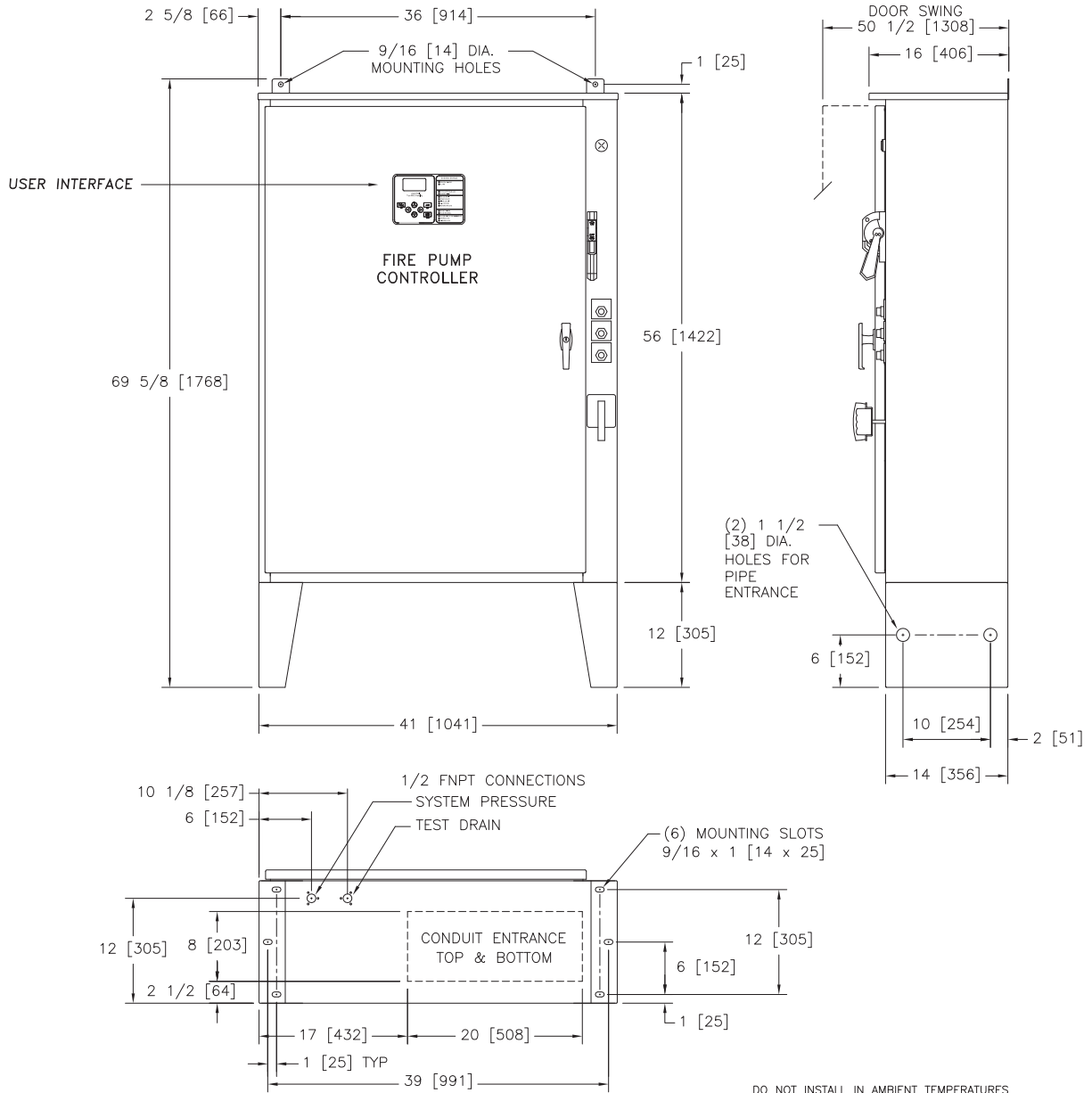




Mark IIx6 Electric Fire Pump Controllers

Dimensions and Shipping Weight

FTA1500 Primary Resistor Starting



STANDARD WITHSTAND RATINGS	
200-600V - 100,000 Amps RMS Sym.	
INTERMEDIATE WITHSTAND RATINGS	
200-600V - 150,000 Amps RMS Sym.	
HIGH WITHSTAND RATINGS	
200-600V - 200,000 Amps RMS Sym.	
LINE VOLTAGE	MOTOR HORSEPOWER
200	□ 75-100
208	□ 75-100
220-240	□ 75-100
380-415	□ -
440-480	□ -
550-600	□ -

APPROXIMATE SHIPPING WEIGHT
395 [179]

DO NOT INSTALL IN AMBIENT TEMPERATURES BELOW 41°F [5°C].

ALL DIMENSIONS - INCHES [MM]
SHIPPING WEIGHT - POUNDS [KG]

THIS DIMENSION DRAWING COVERS FTA1500 CONTROLLERS AT THE HORSEPOWER, VOLTAGE AND WITHSTAND RATINGS AS LISTED IN THE TABLE. FOR OTHER HORSEPOWER OR WITHSTAND RATINGS, REFER TO ED1500-02

SPECIFICATIONS AND DIMENSIONS SUBJECT TO CHANGE WITHOUT NOTICE. DO NOT USE FOR CONSTRUCTION. REQUEST CONSTRUCTION DRAWINGS FROM FIRETROL OR YOUR LOCAL FIRETROL REPRESENTATIVE.

THIRD ANGLE PROJECTION	SIZE	A	BY	TEF	DATE	07-23-02
	DRAWN BY	TEF	DATE	07-23-02		
	FINAL APPROVAL	TEF	DATE	07-23-02		



UPDATED TITLE BLOCK		C	281057	JMW	TEF	10-02-19
ADDED COMPONENTS TO MEET FM REQUIREMENTS		B	228552	JC	TEF	08-11-10
REVISION DESCRIPTION		REV	ECN NO	BY	APP	DATE
DIMENSIONS AND SHIPPING WEIGHT		FTA1500		DRAWING NUMBER		
PRIMARY RESISTOR FIRE PUMP CONTROLLER				DD1500-56		
DWG REV	C	ECN NO	281057	SHEET 1 OF 1		

All rights reserved. The drawing and the information contained or depicted herein are the sole property of Firetrol, Inc. Copies are communicated to the recipient in strict confidence and may not be retransmitted, published, reproduced, copied or used in any manner, including as the basis for the manufacture or sale of any products, without the express prior written consent of Firetrol, Inc.