

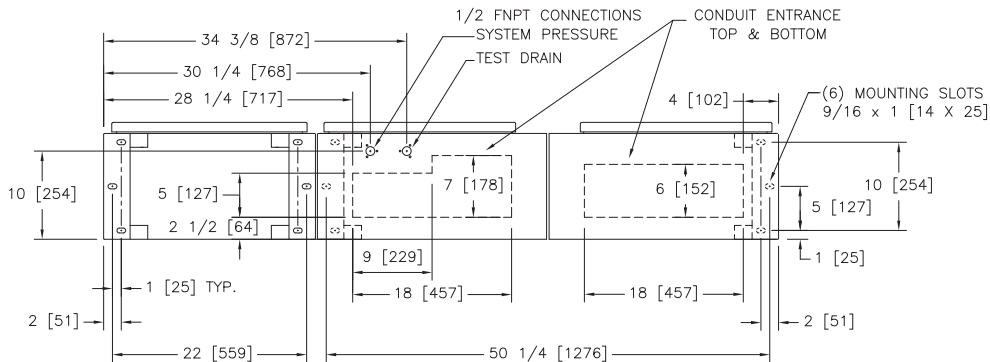
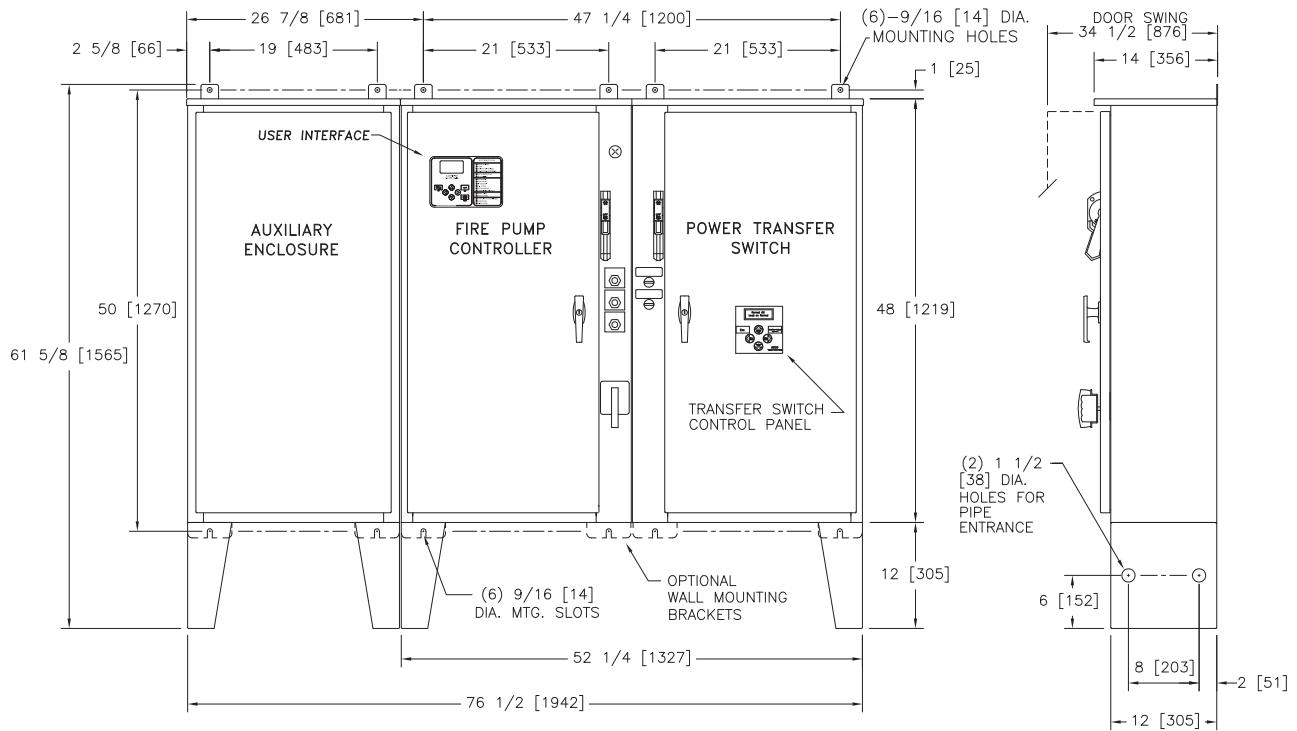


Dimensions and Shipping Weight

FTA1500 / FTA950

Primary Resistor Starting With Power Transfer Switch

Mark IIx6 Electric Fire Pump Controllers



STANDARD WITHSTAND RATINGS	
200-600V - 100,000 Amps RMS Sym.	
INTERMEDIATE WITHSTAND RATINGS	
200-600V - 150,000 Amps RMS Sym.	
HIGH WITHSTAND RATINGS	
200-600V - 200,000 Amps RMS Sym.	
LINE VOLTAGE	MOTOR HORSEPOWER
200	□ ---
208	□ ---
220-240	□ ---
380-415	□ ---
440-480	□ 125-150
550-600	□ 125-150

APPROXIMATE SHIPPING WEIGHT

675 [306]

DO NOT INSTALL IN AMBIENT TEMPERATURES BELOW 41°F [5°C].

ALL DIMENSIONS - INCHES [MM]
SHIPPING WEIGHT - POUNDS [KG]

THIS DIMENSION DRAWING COVERS FTA1500 CONTROLLERS AT THE HORSEPOWER, VOLTAGE AND WITHSTAND RATINGS AS LISTED IN THE TABLE. FOR OTHER HORSEPOWER OR WITHSTAND RATINGS, REFER TO ED1500-02

SPECIFICATIONS AND DIMENSIONS SUBJECT TO CHANGE WITHOUT NOTICE. DO NOT USE FOR CONSTRUCTION. REQUEST CONSTRUCTION DRAWINGS FROM FIRETROL OR YOUR LOCAL FIRETROL REPRESENTATIVE.

UPDATED TITLE BLOCK		C	281057	JMW	TEF	10-02-19
ADDED COMPONENTS TO MEET FM REQUIREMENTS		B	228552	JC	TEF	08-11-10
REVISION DESCRIPTION		REV	ECN NO	BY	APP	DATE
DIMENSIONS AND SHIPPING WEIGHT		FTA1500 WITH FTA950		DRAWING NUMBER		
PRIMARY RESISTOR FIRE PUMP CONTROLLER WITH POWER TRANSFER SWITCH		DD1500-62				
DWG REV C		ECN NO 281057		SHEET 1 OF 1		

THIRD ANGLE PROJECTION	SIZE	A	BY	DATE
	DRAWN BY	TEF	07-23-02	
	FINAL APPROVAL	TEF	07-23-02	



© Firetrol, Inc. Not for construction. Subject to change without notice.