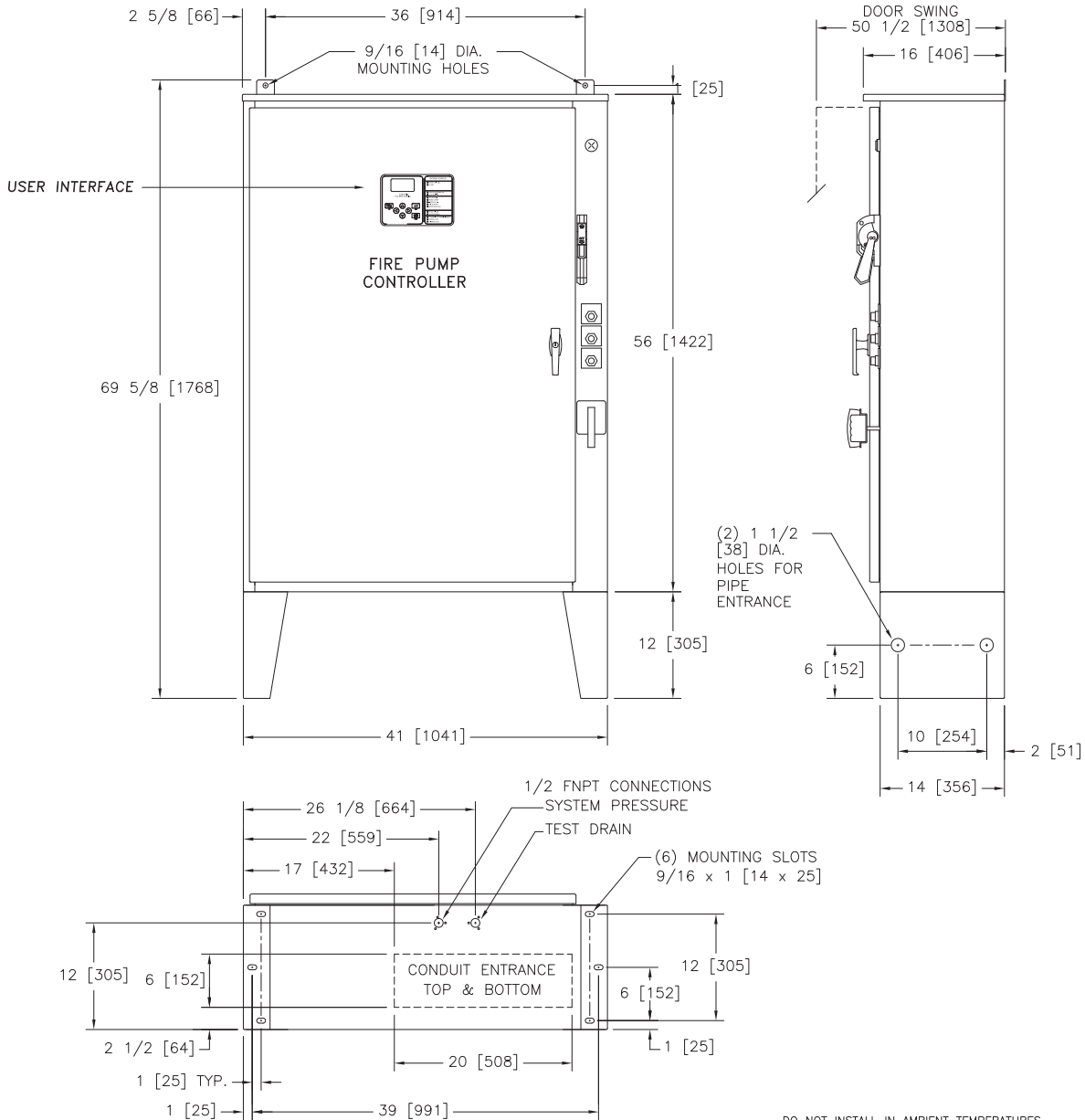




Mark IIx6 Electric Fire Pump Controllers

Dimensions and Shipping Weight FTA1800 Autotransformer Starting



STANDARD WITHSTAND RATINGS 200-600V - 100,000 Amps RMS Sym.	
INTERMEDIATE WITHSTAND RATINGS 200-600V - 150,000 Amps RMS Sym.	
HIGH WITHSTAND RATINGS 200-600V - 200,000 Amps RMS Sym.	
LINE VOLTAGE	MOTOR HORSEPOWER
200	□ 75-100
208	□ 75-125
220-240	□ 75-125
380-415	□ 125-200
440-480	□ 200-250
550-600	□ 200-300

APPROXIMATE SHIPPING WEIGHT
535 [243]

DO NOT INSTALL IN AMBIENT TEMPERATURES BELOW 41°F [5°C].

ALL DIMENSIONS - INCHES [MM]
SHIPPING WEIGHT - POUNDS [KG]

THIS DIMENSION DRAWING COVERS FTA1800 CONTROLLERS AT THE HORSEPOWER, VOLTAGE AND WITHSTAND RATINGS AS LISTED IN THE TABLE. FOR OTHER HORSEPOWER OR WITHSTAND RATINGS, REFER TO ED1800-02

SPECIFICATIONS AND DIMENSIONS SUBJECT TO CHANGE WITHOUT NOTICE. DO NOT USE FOR CONSTRUCTION. REQUEST CONSTRUCTION DRAWINGS FROM FIRETROL OR YOUR LOCAL FIRETROL REPRESENTATIVE.

THIRD ANGLE PROJECTION	SIZE	A	BY	DATE
	DRAWN BY	TEF	07-23-02	
	FINAL APPROVAL	TEF	07-23-02	



© Firetrol, Inc. Not for construction. Subject to change without notice.

UPDATED TITLE BLOCK		D	281195	JMW	TEF	10-03-19
REVISED MOTOR HORSEPOWER CHART		C	237408	JMW	TEF	06-04-12
REVISION DESCRIPTION		REV	ECN NO	BY	APP	DATE
DIMENSIONS AND SHIPPING WEIGHT		FTA1800				
AUTOTRANSFORMER FIRE PUMP CONTROLLER		DRAWING NUMBER DD1800-56				
DWG REV	D	ECN NO	281195	SHEET 1 OF 1		