

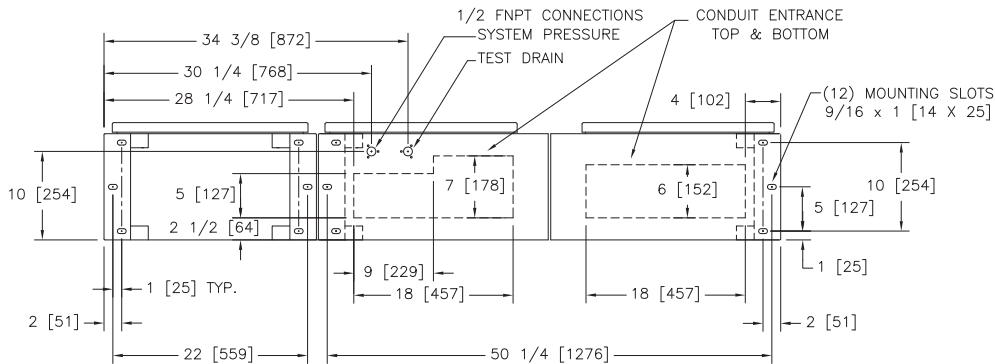
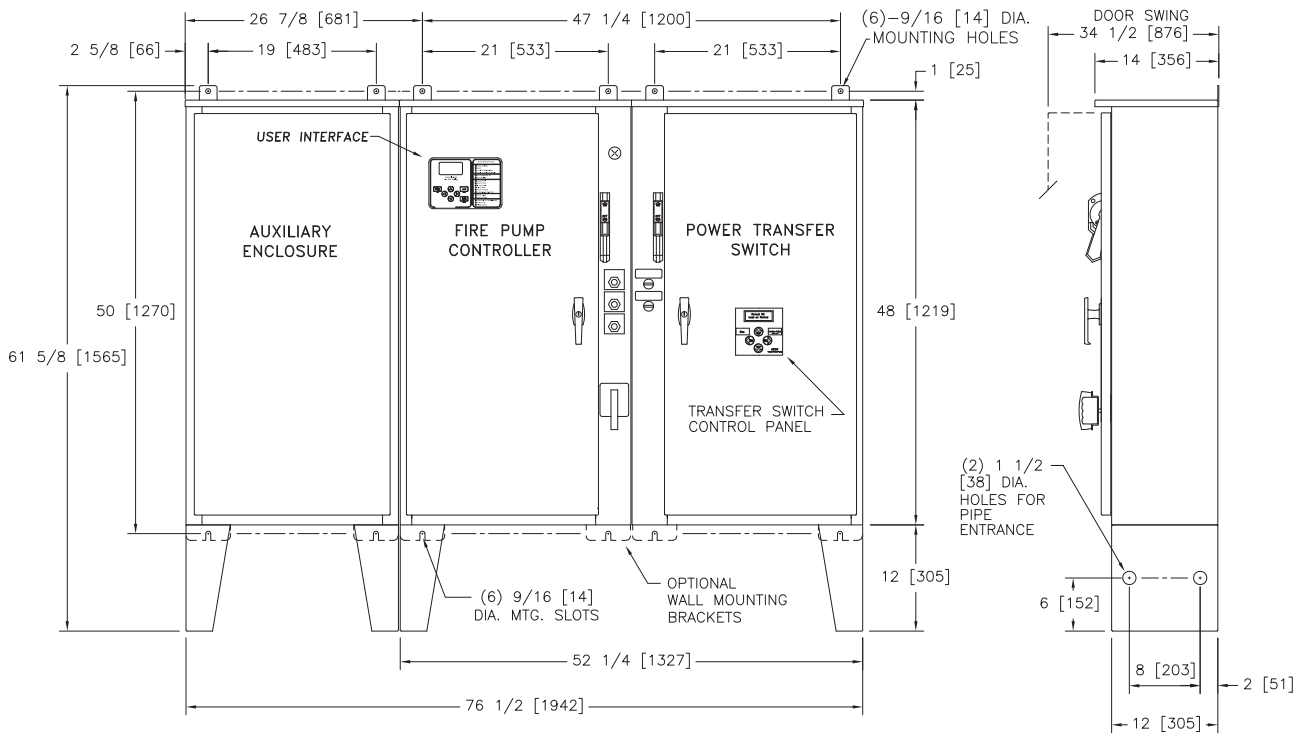


# Dimensions and Shipping Weight

## FTA1800 / FTA950

### Autotransformer Starting With Power Transfer Switch

## Mark IIx6 Electric Fire Pump Controllers



STANDARD WITHSTAND RATINGS	
200-600V - 100,000 Amps RMS Sym.	
INTERMEDIATE WITHSTAND RATINGS	
200-600V - 150,000 Amps RMS Sym.	
HIGH WITHSTAND RATINGS	
200-600V - 200,000 Amps RMS Sym.	
LINE VOLTAGE	MOTOR HORSEPOWER
200	□ ---
208	□ ---
220-240	□ ---
380-415	□ ---
440-480	□ 150
550-600	□ 150

APPROXIMATE SHIPPING WEIGHT  
735 [333]

DO NOT INSTALL IN AMBIENT TEMPERATURES BELOW 41°F [5°C].

ALL DIMENSIONS - INCHES [MM]  
SHIPPING WEIGHT - POUNDS [KG]

THIS DIMENSION DRAWING COVERS FTA1800 CONTROLLERS AT THE HORSEPOWER, VOLTAGE AND WITHSTAND RATINGS AS LISTED IN THE TABLE. FOR OTHER HORSEPOWER OR WITHSTAND RATINGS, REFER TO ED1800-02

SPECIFICATIONS AND DIMENSIONS SUBJECT TO CHANGE WITHOUT NOTICE. DO NOT USE FOR CONSTRUCTION. REQUEST CONSTRUCTION DRAWINGS FROM FIRETROL OR YOUR LOCAL FIRETROL REPRESENTATIVE.

THIRD ANGLE PROJECTION	SIZE	A	BY	TEF	DATE	07-23-02
	DRAWN BY	TEF	DATE	07-23-02		
	FINAL APPROVAL	TEF	DATE	07-23-02		



© Firetrol, Inc. Not for construction. Subject to change without notice.

UPDATED TITLE BLOCK		C	281195	JMW	TEF	10-03-19
ADDED COMPONENTS TO MEET FM REQUIREMENTS		B	228553	JC	TEF	06-17-10
REVISION DESCRIPTION		REV	ECN NO	BY	APP	DATE
DIMENSIONS AND SHIPPING WEIGHT		FTA1800 WITH FTA950		DRAWING NUMBER		
AUTOTRANSFORMER FIRE PUMP CONTROLLER WITH POWER TRANSFER SWITCH				DD1800-62		
DWG REV		C	ECN NO	281195	SHEET 1 OF 1	