

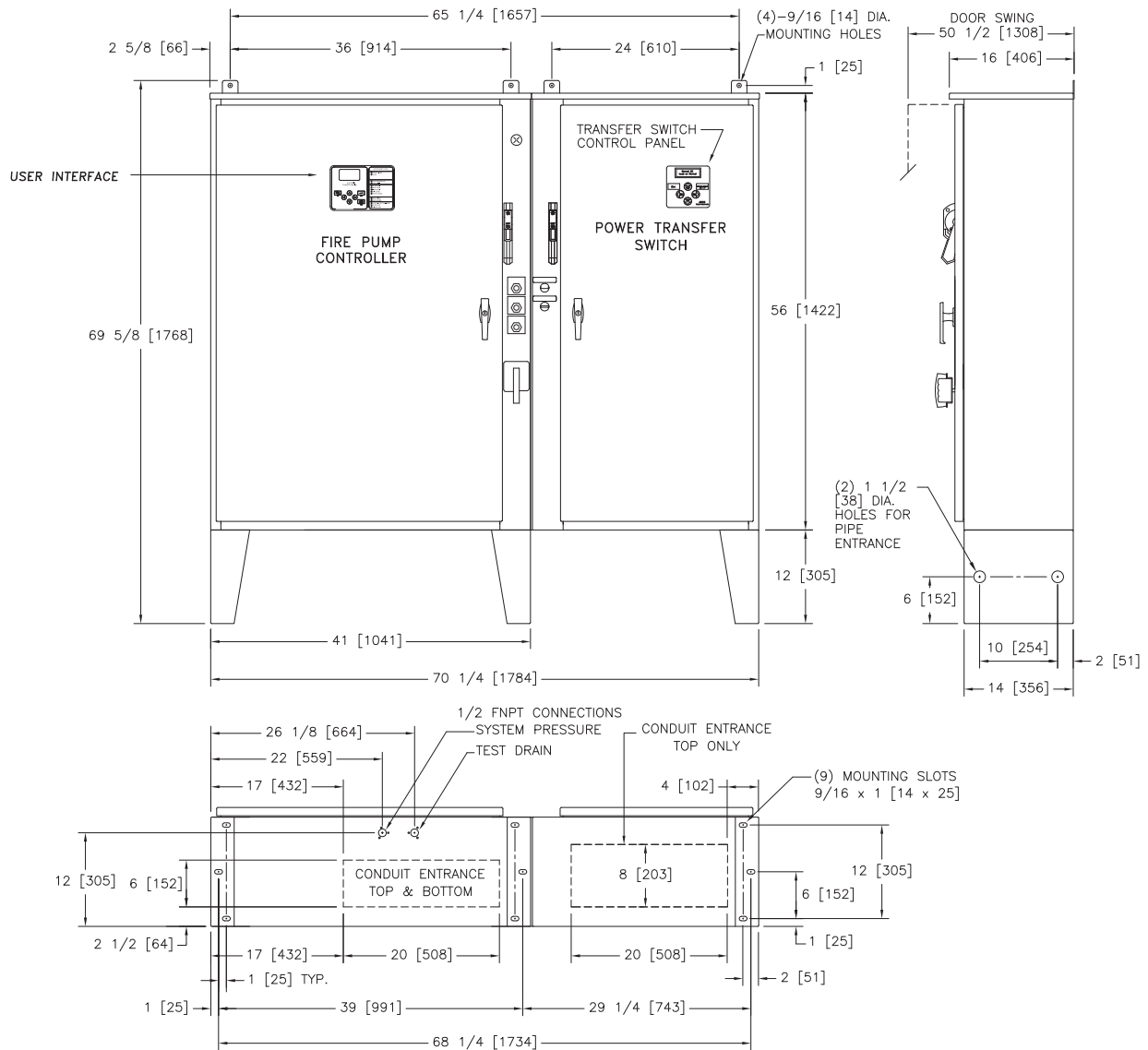


Dimensions and Shipping Weight

FTA1800 / FTA950

Autotransformer Starting With Power Transfer Switch

Mark IIxG Electric Fire Pump Controllers



DO NOT INSTALL IN AMBIENT TEMPERATURES BELOW 41°F [5°C].

ALL DIMENSIONS - INCHES [MM]
SHIPPING WEIGHT - POUNDS [KG]

THIS DIMENSION DRAWING COVERS FTA1350 CONTROLLERS AT THE HORSEPOWER, VOLTAGE AND WITHSTAND RATINGS AS LISTED IN THE TABLE. FOR OTHER HORSEPOWER OR WITHSTAND RATINGS, REFER TO ED1350-02

SPECIFICATIONS AND DIMENSIONS SUBJECT TO CHANGE WITHOUT NOTICE. DO NOT USE FOR CONSTRUCTION. REQUEST CONSTRUCTION DRAWINGS FROM FIRETROL OR YOUR LOCAL FIRETROL REPRESENTATIVE.

STANDARD WITHSTAND RATINGS	
200-600V - 100,000 Amps RMS Sym.	
INTERMEDIATE WITHSTAND RATINGS	
200-600V - 150,000 Amps RMS Sym.	
HIGH WITHSTAND RATINGS	
200-600V - 200,000 Amps RMS Sym.	
LINE VOLTAGE	MOTOR HORSEPOWER
200	□ 75-100
208	□ 75-125
220-240	□ 75-125
380-415	□ 125-200
440-480	□ 200-250
550-600	□ 250-300

APPROXIMATE SHIPPING WEIGHT
765 [347]

	SIZE	A	BY	DATE
	DRAWN BY	TEF	08-23-10	
	FINAL APPROVAL	TEF	08-23-10	



© Firetrol, Inc. Not for construction. Subject to change without notice.

UPDATED TITLE BLOCK		C	281195	JMW	TEF	10-07-19
REVISED MOTOR HORSEPOWER CHART		B	237408	JMW	TEF	09-28-10
REVISION DESCRIPTION		REV	ECN NO	BY	APP	DATE
DIMENSIONS AND SHIPPING WEIGHT		FTA1800 WITH FTA950		DRAWING NUMBER		
AUTOTRANSFORMER FIRE PUMP CONTROLLER WITH POWER TRANSFER SWITCH				DD1800-63		
		DWG REV	C	ECN NO	281195	SHEET 1 OF 1