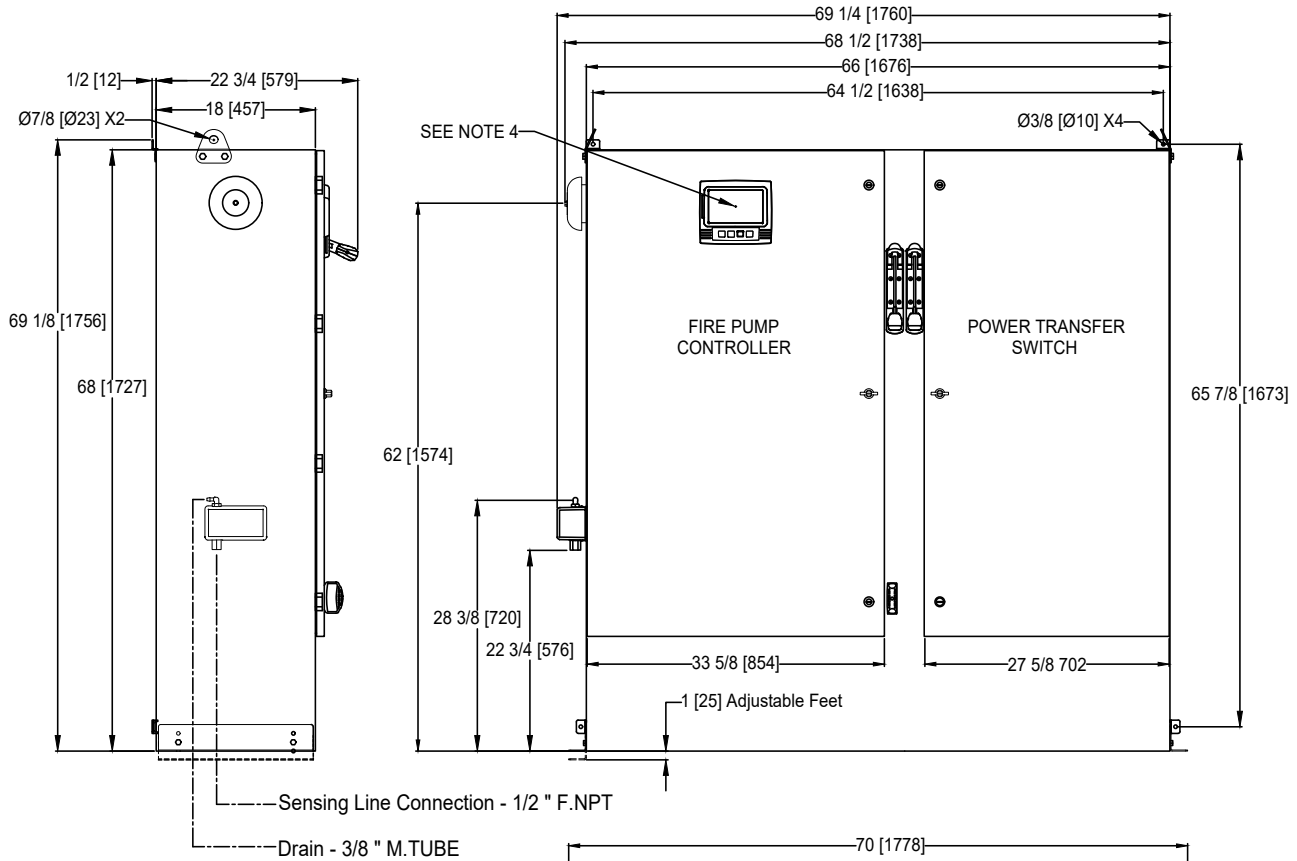


# Dimensions and Shipping Weight

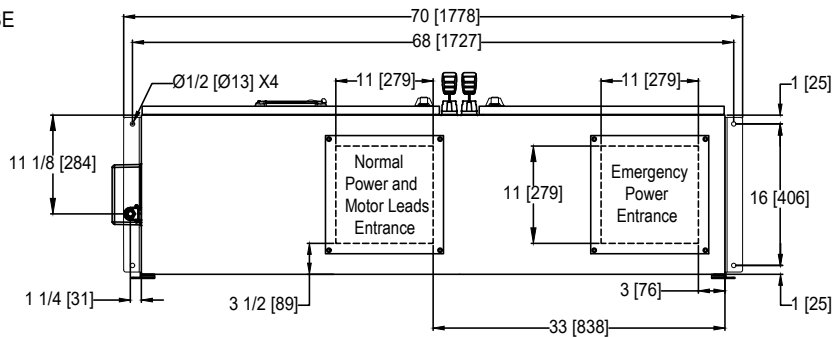


FTA1930/950

## MARK<sup>III</sup> Electric Fire Pump Controllers - Solid State Reduced Current Starting With Power Transfer Switch



NOTE:  
DRAIN CONNECTION MUST BE PIPED TO WASTE DRAIN. FAILURE TO CONNECT TO A FLOOR DRAIN WILL RESULT IN UNSAFE CONDITIONS OF STANDING WATER AROUND CONTROLLER.



LINE VOLTAGE	MOTOR HORSEPOWER
208	125
220-240	150
380-400-415	250
440-480	300
600	400
APPROX SHIPPING WT: 1150 [522]	

- NOTES:
- STANDARD: NEMA 2
  - STANDARD PAINT: TEXTURED RED RAL3002
  - ALL DIMENSIONS IN INCHES [MILLIMETERS]  
SHIPPING WEIGHT IN POUNDS [KG]
  - CENTER OF MARK III SCREEN: 61 5/8 [1564] FROM BOTTOM OF ENCLOSURE
  - BOTTOM CONDUIT ENTRANCE THROUGH REMOVABLE GLAND PLATE RECOMMENDED
  - USE WATERTIGHT CONDUIT AND CONNECTOR ONLY
  - PROTECT EQUIPMENT AGAINST DRILLING CHIPS
  - DOOR SWING EQUAL TO DOOR WIDTH
  - DRAWINGS FOR CONSTRUCTION PURPOSES MUST BE OBTAINED FROM FIRETROL OR THE LOCAL FIRETROL REPRESENTATIVE
  - SEISMIC MOUNTING TO BE RIGID WALL AND BASE ONLY

	SIZE	A	BY	DATE	<p>© Firetrol, Inc. Not for construction. Subject to change without notice.</p>	REVISED VOLTAGE/POWER CHART		A	-	CIR	CIR	6-8-20	
	DRAWN BY	CIR	11-5-19	REVISION DESCRIPTION		REV	ECN NO	BY	APP	DATE			
	FINAL APPROVAL	CIR	11-5-19	DIMENSIONS & SHIPPING WEIGHT		FTA1930 WITH FTA950		DRAWING NUMBER			DD1930-83		
				DIGITAL SOLID STATE REDUCED CURRENT FIRE PUMP CONTROLLER AND POWER TRANSFER SWITCH		DWG REV	A	ECN NO	-	SHEET 1 OF 1		CDL	