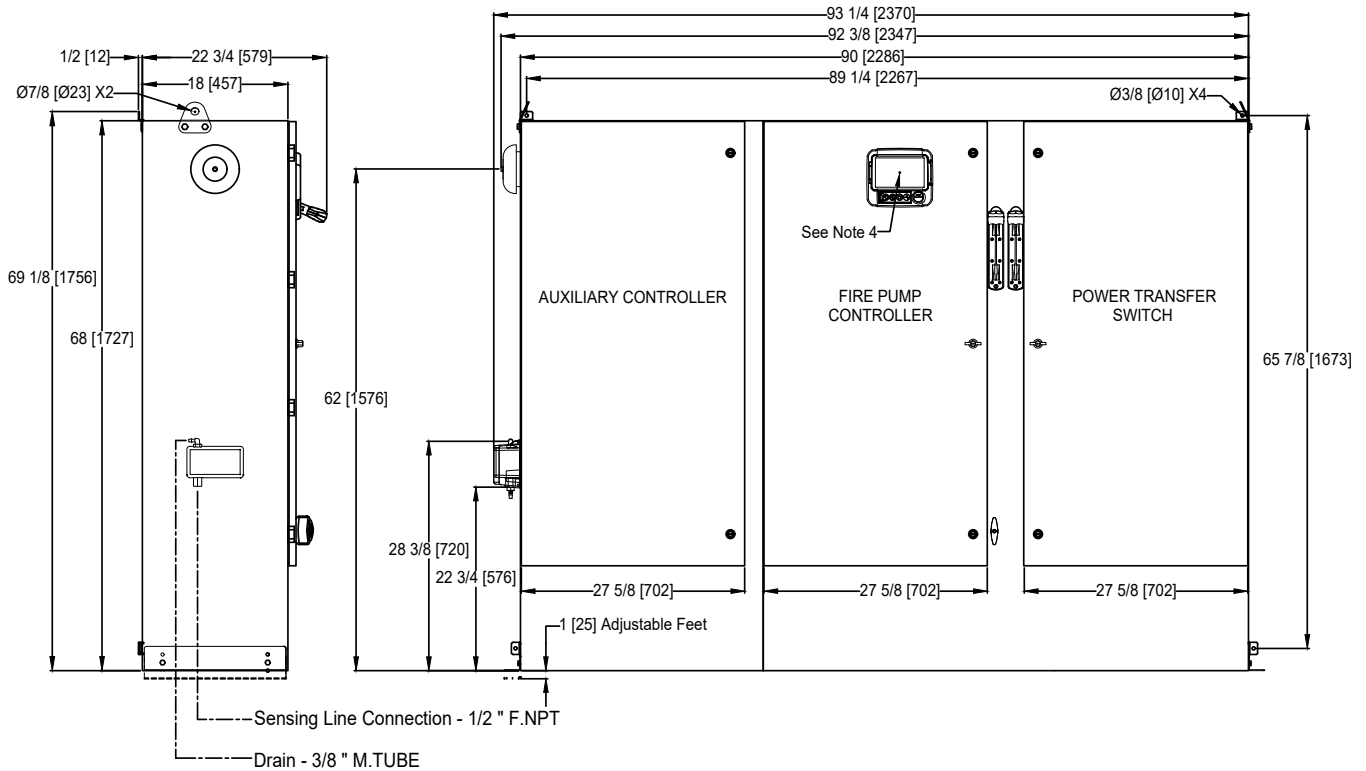


Dimensions and Shipping Weight

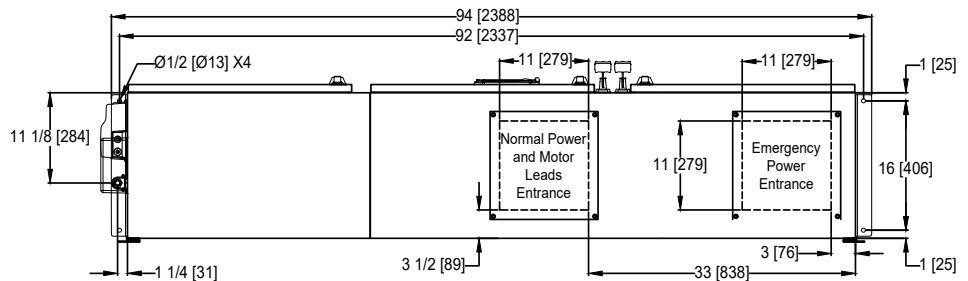


FTA1930/950

MARK^{III} Electric Fire Pump Controllers - Solid State Reduced Current Starting With Power Transfer Switch



NOTE:
DRAIN CONNECTION MUST BE PIPED TO WASTE DRAIN. FAILURE TO CONNECT TO A FLOOR DRAIN WILL RESULT IN UNSAFE CONDITIONS OF STANDING WATER AROUND CONTROLLER.



VOLTAGE/POWER TABLE	
LINE VOLTAGE	MOTOR HORSEPOWER
208	150
220-240	200
380-400-415	300
440-480	350-400
600	450-500
APPROX SHIPPING WT: 1150 [522]	

- NOTES:
- STANDARD: NEMA 2
 - STANDARD PAINT: TEXTURED RED RAL3002
 - ALL DIMENSIONS IN INCHES [MILLIMETERS]
SHIPPING WEIGHT IN POUNDS [KG]
 - CENTER OF MARK III SCREEN: 61 5/8 [1564] FROM BOTTOM OF ENCLOSURE
 - BOTTOM CONDUIT ENTRANCE THROUGH REMOVABLE GLAND PLATE RECOMMENDED
 - USE WATERTIGHT CONDUIT AND CONNECTOR ONLY
 - PROTECT EQUIPMENT AGAINST DRILLING CHIPS
 - DOOR SWING EQUAL TO DOOR WIDTH
 - DRAWINGS FOR CONSTRUCTION PURPOSES MUST BE OBTAINED FROM FIRETROL OR THE LOCAL FIRETROL REPRESENTATIVE
 - SEISMIC MOUNTING TO BE RIGID WALL AND BASE ONLY

	SIZE	A	BY	DATE	<p>© Firetrol, Inc. Not for construction. Subject to change without notice.</p>	REVISED EXTENSIVELY	A	-	CIR	CIR	6-8-20
	DRAWN BY	CIR	11-5-19	REVISION DESCRIPTION		REV	ECN NO	BY	APP	DATE	
	FINAL APPROVAL	CIR	11-5-19	DIMENSIONS & SHIPPING WEIGHT		FTA1930 WITH FTA950		DRAWING NUMBER		DD1930-84	
				DIGITAL SOLID STATE REDUCED CURRENT FIRE PUMP CONTROLLER AND POWER TRANSFER SWITCH		DWG REV	A	ECN NO	-	SHEET 1 OF 1	