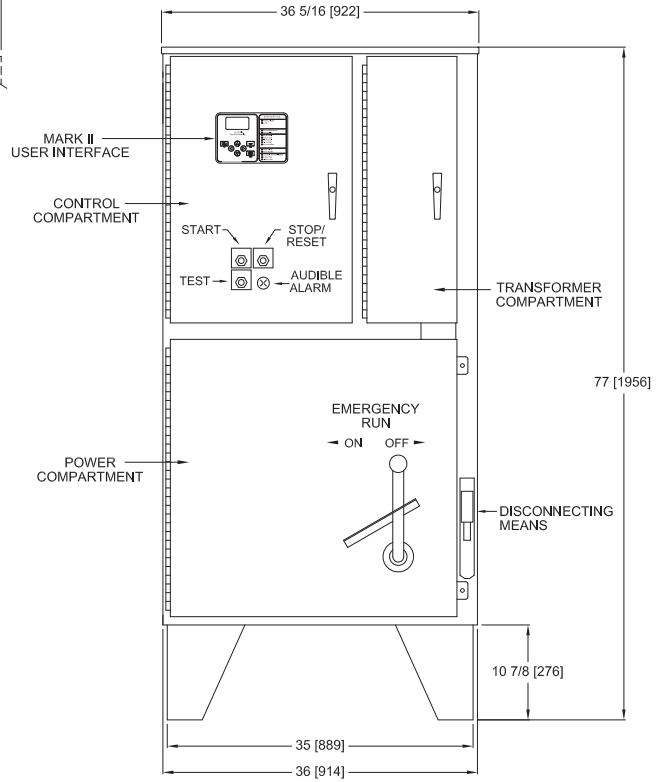
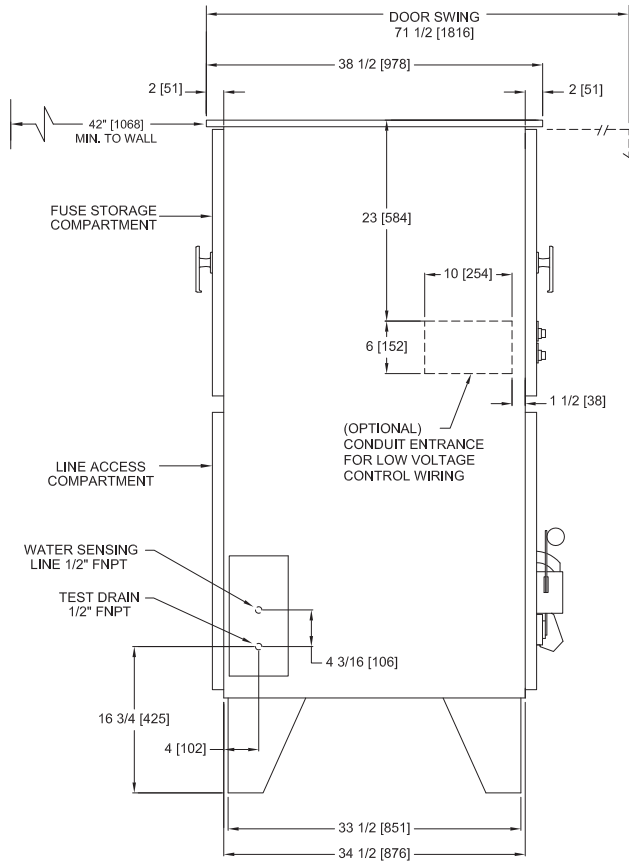




Mark II₆ Electric Fire Pump Controllers

Dimensions and Shipping Weight FTA2000 Medium Voltage Across The Line Starting



DO NOT INSTALL IN AMBIENT TEMPERATURES BELOW 41°F [5°C]

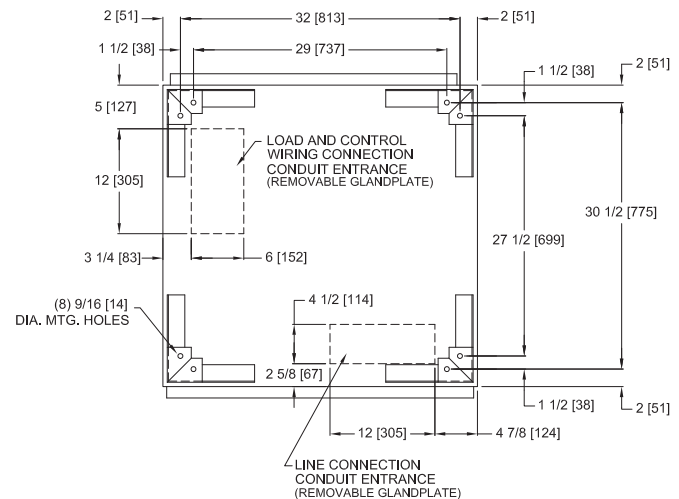
DIMENSIONS SHOWN ON THIS DRAWING ARE APPLICABLE FOR NEMA TYPES 2/3R/4/4X/12

ALL DIMENSIONS - INCHES [MM]
SHIPPING WEIGHT - POUNDS [KG]

APPROXIMATE SHIPPING WEIGHT
1000 [453]

CAUTION

CONTROLLER TEST DRAIN MUST BE PIPED TO A WASTE DRAIN. FAILURE TO CONNECT THE TEST DRAIN TO A FLOOR DRAIN WILL RESULT IN UNSAFE CONDITIONS OF WATER UNDER AND AROUND THE CONTROLLER.



THIRD ANGLE PROJECTION	SIZE	A	BY	DATE
	DRAWN BY	TEF	05-07-03	
	FINAL APPROVAL	TEF	05-07-03	



© Firetrol, Inc. Not for construction. Subject to change without notice.

UPDATED TITLE BLOCK		D	281356	JMW	TEF	10-14-19
REVISED WATER SENSING AND TEST DRAIN NOTES		C	249452	JMW	TEF	07-10-14
REVISION DESCRIPTION		REV	ECN NO	BY	APP	DATE
DIMENSIONS AND SHIPPING WEIGHT		FTA2000		DRAWING NUMBER		
5/7.2KV CLASS ELECTRIC FIRE PUMP CONTROLLER				DD2000-20		
DWG REV	D	ECN NO	281356	SHEET 1 OF 1		

All rights reserved. The drawing and the information contained or depicted herein are the sole property of Firetrol, Inc. Copies are communicated to the recipient in strict confidence and may not be retransmitted, published, reproduced, copied or used in any manner, including as the basis for the manufacture or sale of any products, without the express prior written consent of Firetrol, Inc.