

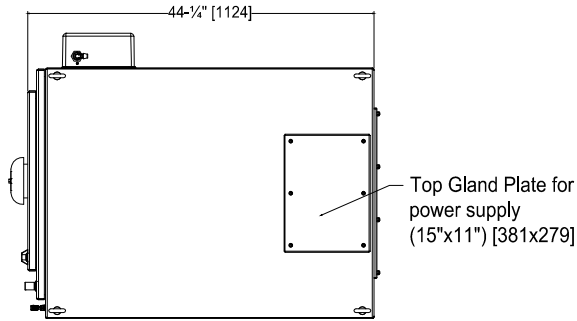
Dimensions and Shipping Weight



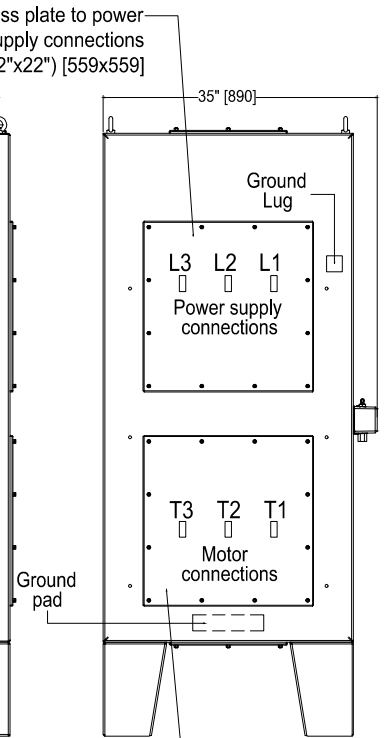
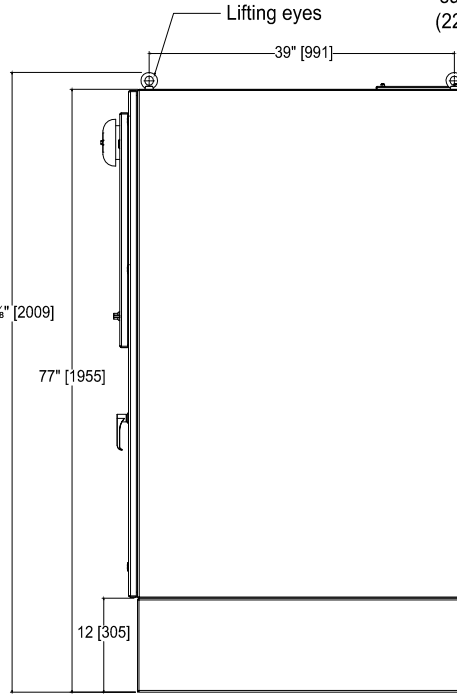
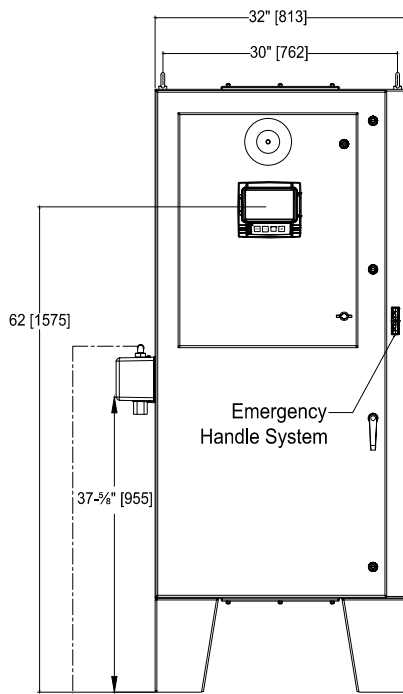
FTA2000

MARK^{III} Medium Voltage Electric Fire Pump Controllers – Across The Line Starting

NOTE:
DRAIN CONNECTION MUST BE PIPED TO WASTE DRAIN. FAILURE TO CONNECT TO A FLOOR DRAIN WILL RESULT IN UNSAFE CONDITIONS OF STANDING WATER AROUND CONTROLLER.

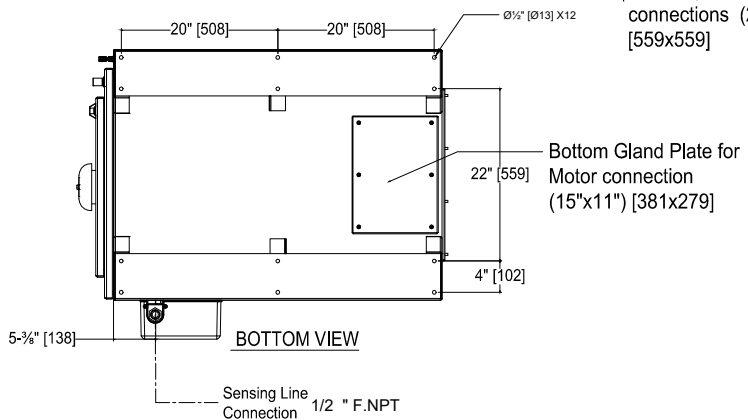


TOP VIEW



Drain
3/8" M.TUBE

- NOTES:
1. STANDARD: NEMA 2
 2. STANDARD PAINT: TEXTURED RED RAL3002
 3. ALL DIMENSIONS IN INCHES [MILLIMETERS]
SHIPPING WEIGHT IN POUNDS [KG]
 4. CENTER OF MARK III SCREEN: 62" [1575] FROM BOTTOM OF ENCLOSURE WITH LEGS AS SHOWN
 5. USE WATERTIGHT CONDUIT AND CONNECTOR ONLY
 7. PROTECT EQUIPMENT AGAINST DRILLING CHIPS
 8. DRAWINGS FOR CONSTRUCTION PURPOSES MUST BE OBTAINED FROM FIRETROL OR THE LOCAL FIRETROL REPRESENTATIVE



BOTTOM VIEW

APPROX SHIPPING WT: 1000 [454]



SIZE	A	BY	DATE
DRAWN BY	CIR	11-5-19	
FINAL APPROVAL	CIR	11-5-19	



© Firetrol, Inc. Not for construction. Subject to change without notice.

RELEASED	-	-	CIR	CIR	11-5-19
REVISION DESCRIPTION	REV	ECN NO	BY	APP	DATE
DIMENSIONS & SHIPPING WEIGHT	FTA2000		DRAWING NUMBER		
5/7.2KV CLASS ELECTRIC FIRE PUMP CONTROLLER			DD2000-30		
	DWG REV	ECN NO	SHEET 1 OF 1		