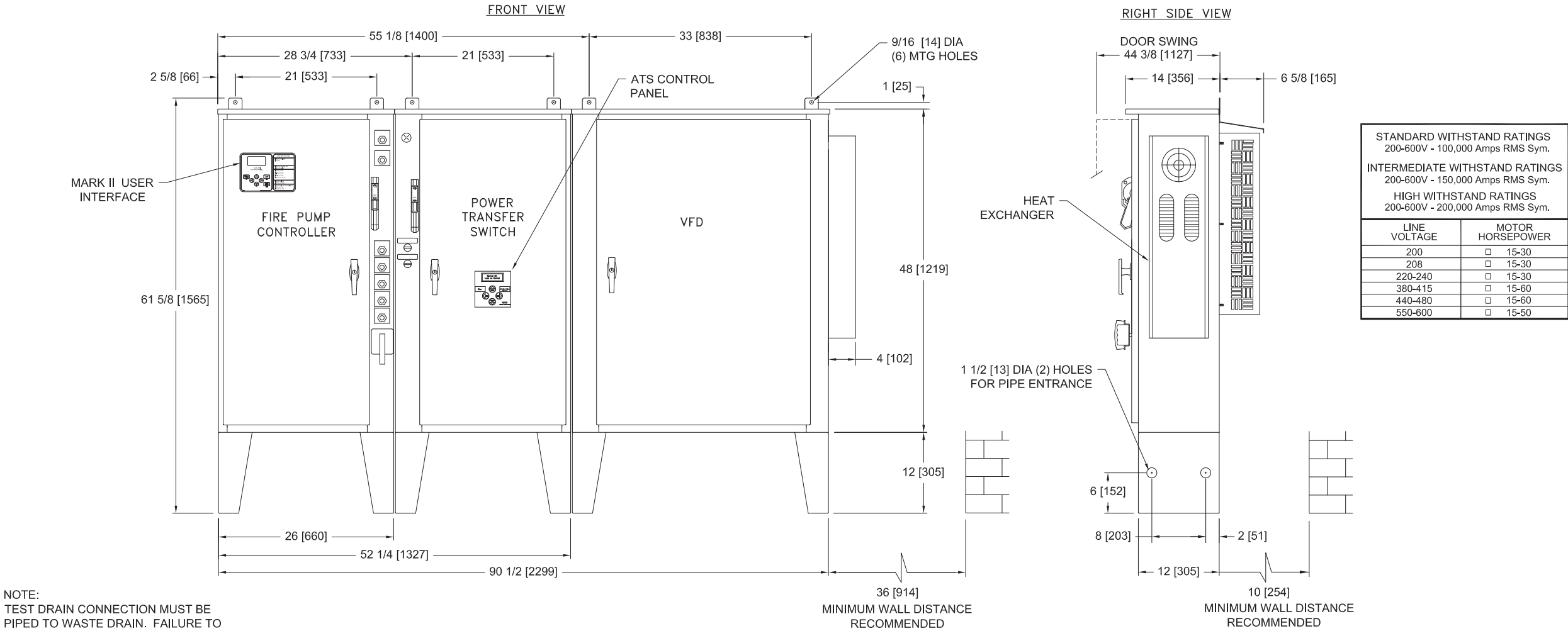




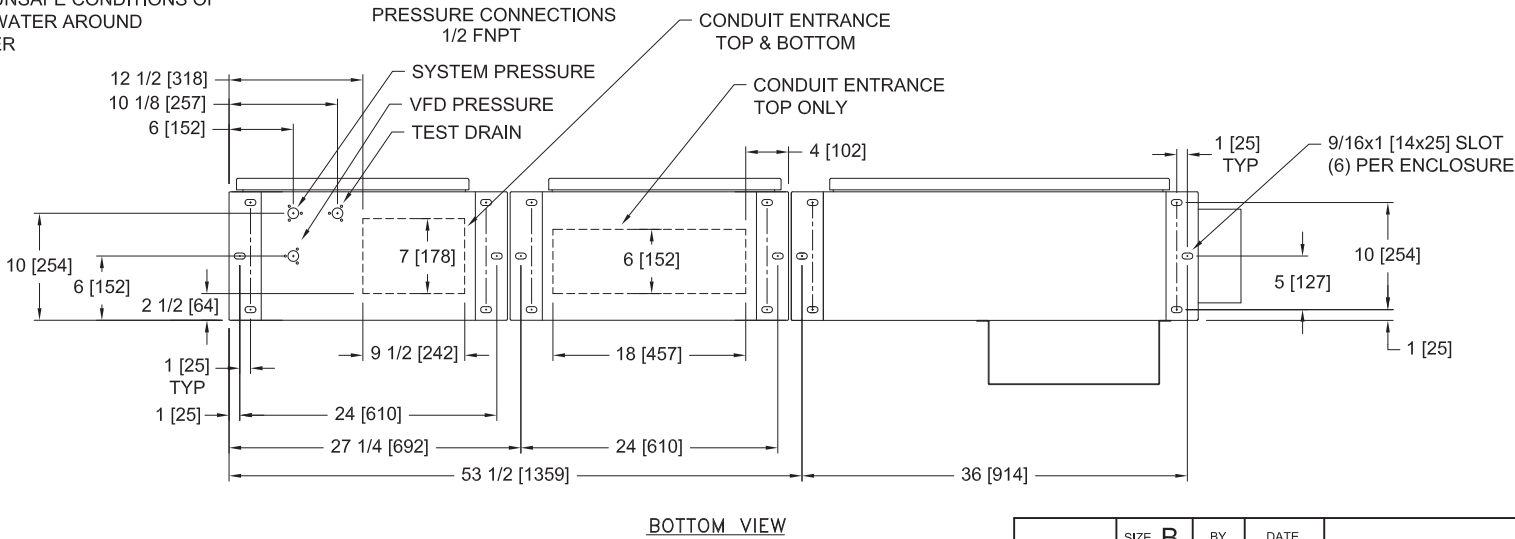
Mark IIx6 Electric Fire Pump Controllers

Dimensions and Shipping Weight
FTA3100 / FTA950

Variable Frequency Starting with Across The Line Bypass and Power Transfer Switch



NOTE:
TEST DRAIN CONNECTION MUST BE
PIPED TO WASTE DRAIN. FAILURE TO
CONNECT TO A FLOOR DRAIN WILL
RESULT IN UNSAFE CONDITIONS OF
STANDING WATER AROUND
CONTROLLER



- NOTES:
- DO NOT INSTALL IN AMBIENT TEMPERATURES ABOVE 40°C [104°F] OR BELOW 5°C [41°F]
 - ALL DIMENSIONS IN INCHES [MM]
 - FOR HORSEPOWER OR WITHSTAND RATINGS NOT LISTED IN THIS TABLE, REFER TO ED3100-01
 - DRAWINGS USED FOR CONSTRUCTION PURPOSES MUST BE OBTAINED FROM FIRETROL OR THE LOCAL FIRETROL REPRESENTATIVE
 - ALL CONTROLLERS TO BE A MINIMUM NEMA TYPE 12

	SIZE	B	BY	DATE
	DRAWN BY	JMW	07-18-14	
	FINAL APPROVAL	CIR	07-18-14	

Firetrol, Inc.

© Firetrol, Inc. Not for construction.
Subject to change without notice.

UPDATED TITLE BLOCK		B	281358	JMW	TEF	10-22-19
ADDED PUSHBUTTONM, RELOCATED AUDIBLE ALARM		A	258303	JMW	CIR	12-02-15
REVISION DESCRIPTION		REV	ECN NO	BY	APP	DATE
ENCLOSURE DIMENSIONS		FTA3100 WITH FTA950		DRAWING NUMBER		
VFD ELECTRIC FIRE PUMP CONTROLLER		DD3100-11				
WITH FULL VOLTAGE BYPASS AND POWER TRANSFER SWITCH		DWG REV	B	ECN NO	281358	SHEET 1 OF 1

All rights reserved. The drawing and the information contained or depicted herein are the sole property of Firetrol, Inc. Copies are communicated to the recipient in strict confidence and may not be retransmitted, published, reproduced, copied or used in any manner, including as the basis for the manufacture or sale of any products, without the express prior written consent of Firetrol, Inc.