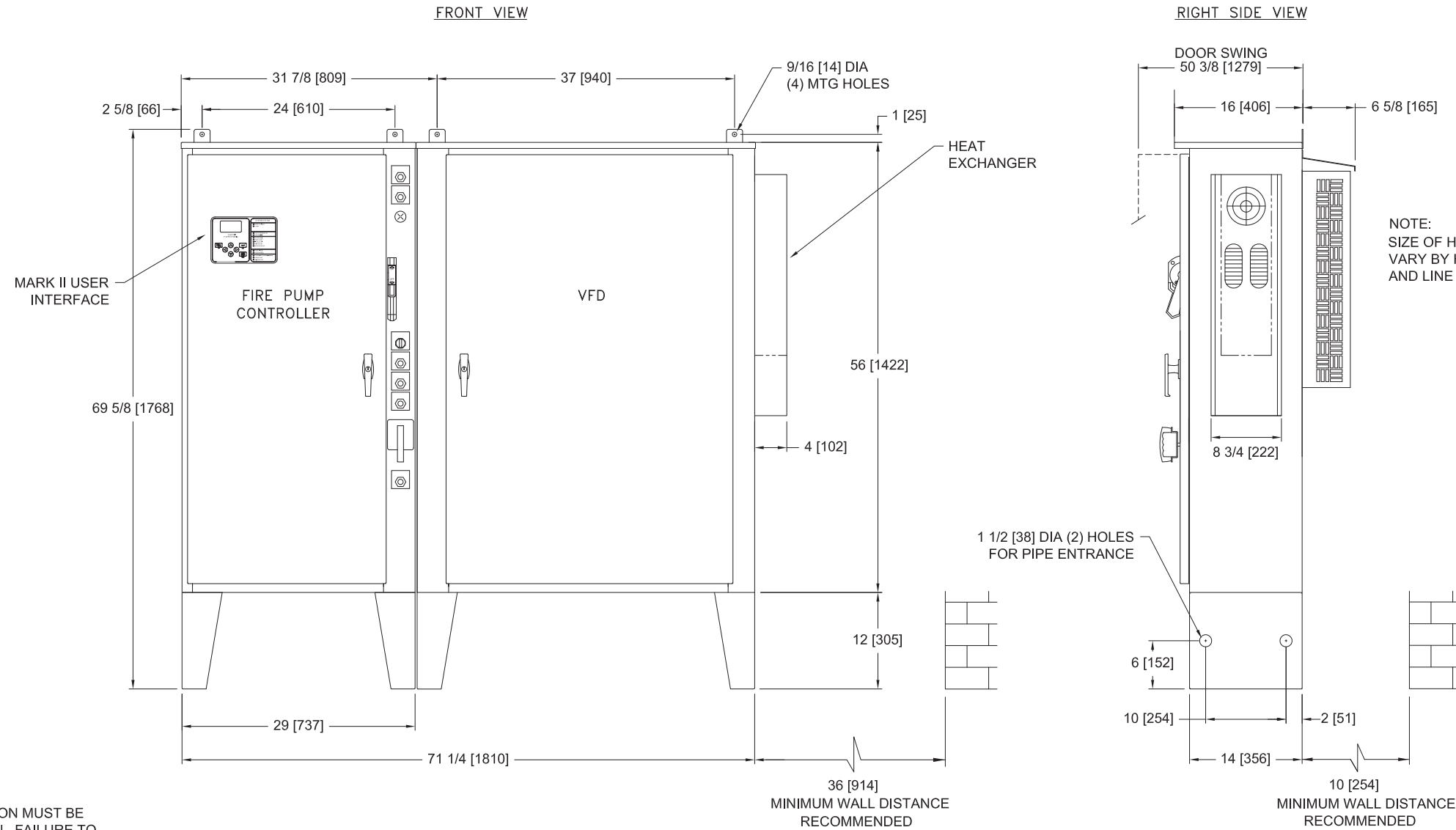




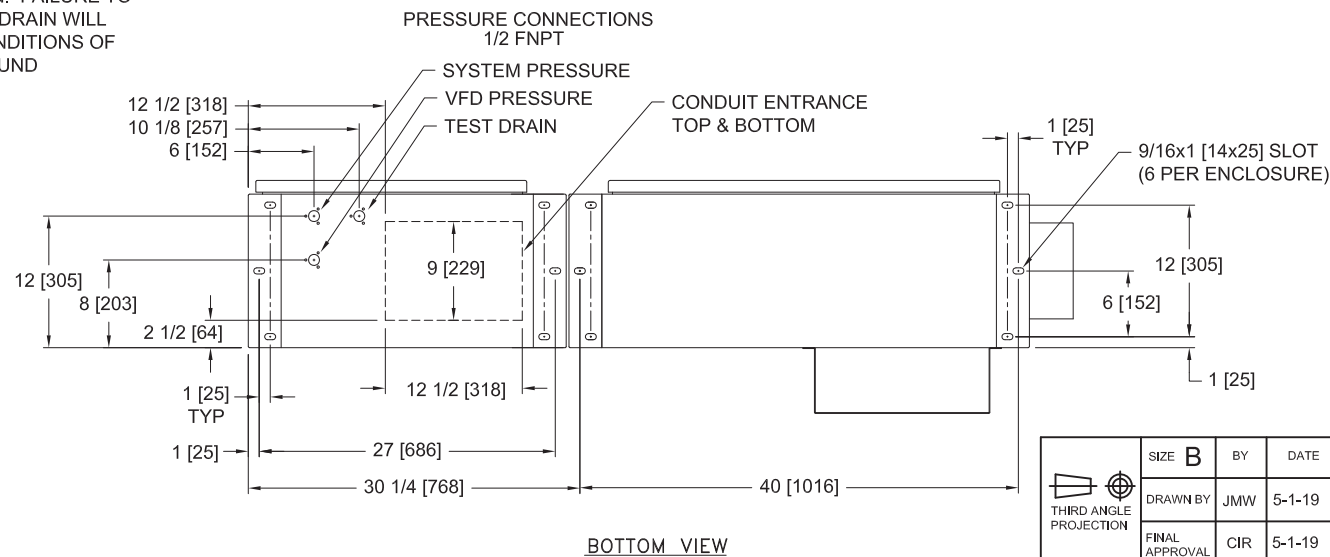
MarkIIx6 Electric Fire Pump Controllers - Variable Speed Starting with Across The Line Bypass



NOTE:  
SIZE OF HEAT EXCHANGERS  
VARY BY HORSEPOWER RATING  
AND LINE VOLTAGE

STANDARD WITHSTAND RATINGS 200-600V - 100,000 Amps RMS Sym.	
INTERMEDIATE WITHSTAND RATINGS 200-600V - 150,000 Amps RMS Sym.	
HIGH WITHSTAND RATINGS 200-600V - 200,000 Amps RMS Sym.	
LINE VOLTAGE	MOTOR HORSEPOWER
200-208	□ 40
220-240	□ 40
380-415	□ 75
440-480	□ 75-100
550-600	□ 60-75

NOTE:  
TEST DRAIN CONNECTION MUST BE  
PIPED TO WASTE DRAIN. FAILURE TO  
CONNECT TO A FLOOR DRAIN WILL  
RESULT IN UNSAFE CONDITIONS OF  
STANDING WATER AROUND  
CONTROLLER



NOTES:

- DO NOT INSTALL IN AMBIENT TEMPERATURES ABOVE 40°C [104°F] OR BELOW 5°C [41°F]
- ALL DIMENSIONS IN INCHES [MM]
- FOR HORSEPOWER OR WITHSTAND RATINGS NOT LISTED IN THIS TABLE, REFER TO ED310M-01
- DRAWINGS USED FOR CONSTRUCTION PURPOSES MUST BE OBTAINED FROM FIRETROL OR THE LOCAL FIRETROL REPRESENTATIVE
- ALL CONTROLLERS TO BE A MINIMUM NEMA TYPE 12

	SIZE	B	BY	DATE	<p>© Firetrol, Inc. Not for construction. Subject to change without notice.</p>	RELEASED	-	277014	JMW	CIR	5-1-19
	DRAWN BY	JMW	5-1-19	REV		ECN NO	BY	APP	DATE		
	FINAL APPROVAL	CIR	5-1-19	ENCLOSURE DIMENSIONS		FTA3100M		DRAWING NUMBER		DD3100M-02	
				VFD ELECTRIC FIRE PUMP CONTROLLER WITH FULL VOLTAGE BYPASS		DWG REV	ECN NO 277014	SHEET 1 OF 1			

All rights reserved. The drawing and the information contained or depicted herein are the sole property of Firetrol, Inc. Copies are communicated to the recipient in strict confidence and may not be retransmitted, published, reproduced, copied or used in any manner, including as the basis for the manufacture or sale of any products, without the express prior written consent of Firetrol, Inc.