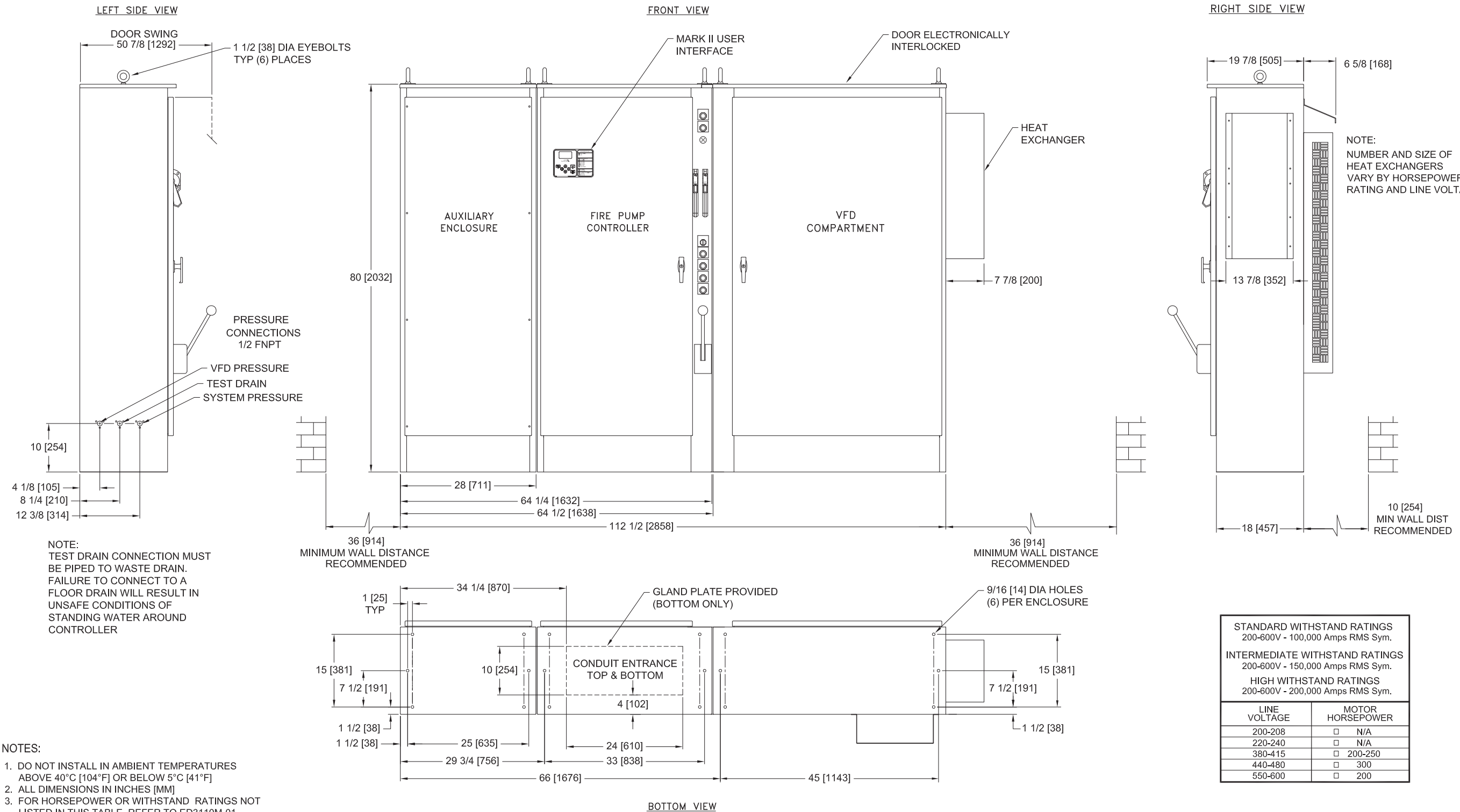


MarkIIxG Electric Fire Pump Controllers - Variable Speed Starting with Autotransformer Bypass



- NOTES:
- DO NOT INSTALL IN AMBIENT TEMPERATURES ABOVE 40°C [104°F] OR BELOW 5°C [41°F]
  - ALL DIMENSIONS IN INCHES [MM]
  - FOR HORSEPOWER OR WITHSTAND RATINGS NOT LISTED IN THIS TABLE, REFER TO ED3110M-01
  - DRAWINGS USED FOR CONSTRUCTION PURPOSES MUST BE OBTAINED FROM FIRETROL OR THE LOCAL FIRETROL REPRESENTATIVE
  - ALL CONTROLLERS TO BE A MINIMUM NEMA TYPE 12
  - VFD COMPARTMENT SECTION IS SHIPPED SEPARATELY FROM FIRE PUMP COMPARTMENT SECTION

NOTE:  
NUMBER AND SIZE OF  
HEAT EXCHANGERS  
VARY BY HORSEPOWER  
RATING AND LINE VOLTAGE

STANDARD WITHSTAND RATINGS	
200-600V - 100,000 Amps RMS Sym.	
INTERMEDIATE WITHSTAND RATINGS	
200-600V - 150,000 Amps RMS Sym.	
HIGH WITHSTAND RATINGS	
200-600V - 200,000 Amps RMS Sym.	
LINE VOLTAGE	MOTOR HORSEPOWER
200-208	<input type="checkbox"/> N/A
220-240	<input type="checkbox"/> N/A
380-415	<input type="checkbox"/> 200-250
440-480	<input type="checkbox"/> 300
550-600	<input type="checkbox"/> 200

	SIZE	B	BY	DATE	REMOVED SPACER BETWEEN VFD AND FIRE PUMP									
	DRAWN BY	JMW	5-8-19		REV	ECN NO	BY	APP	DATE	A	276990	JMW	CIR	5-8-19
	FINAL APPROVAL	CIR	5-8-19		ENCLOSURE DIMENSIONS					FTA3110M				
					VFD ELECTRIC FIRE PUMP CONTROLLER WITH AUTOTRANSFORMER BYPASS					DRAWING NUMBER				
				© Firetrol, Inc. Not for construction. Subject to change without notice.					DD-3110M-06					
									DWG REV A ECN NO 276990 SHEET 1 OF 1					

All rights reserved. The drawing and the information contained or depicted herein are the sole property of Firetrol, Inc. Copies are communicated to the recipient in strict confidence and may not be retransmitted, published, reproduced, copied or used in any manner, including as the basis for the manufacture or sale of any products, without the express prior written consent of Firetrol, Inc.