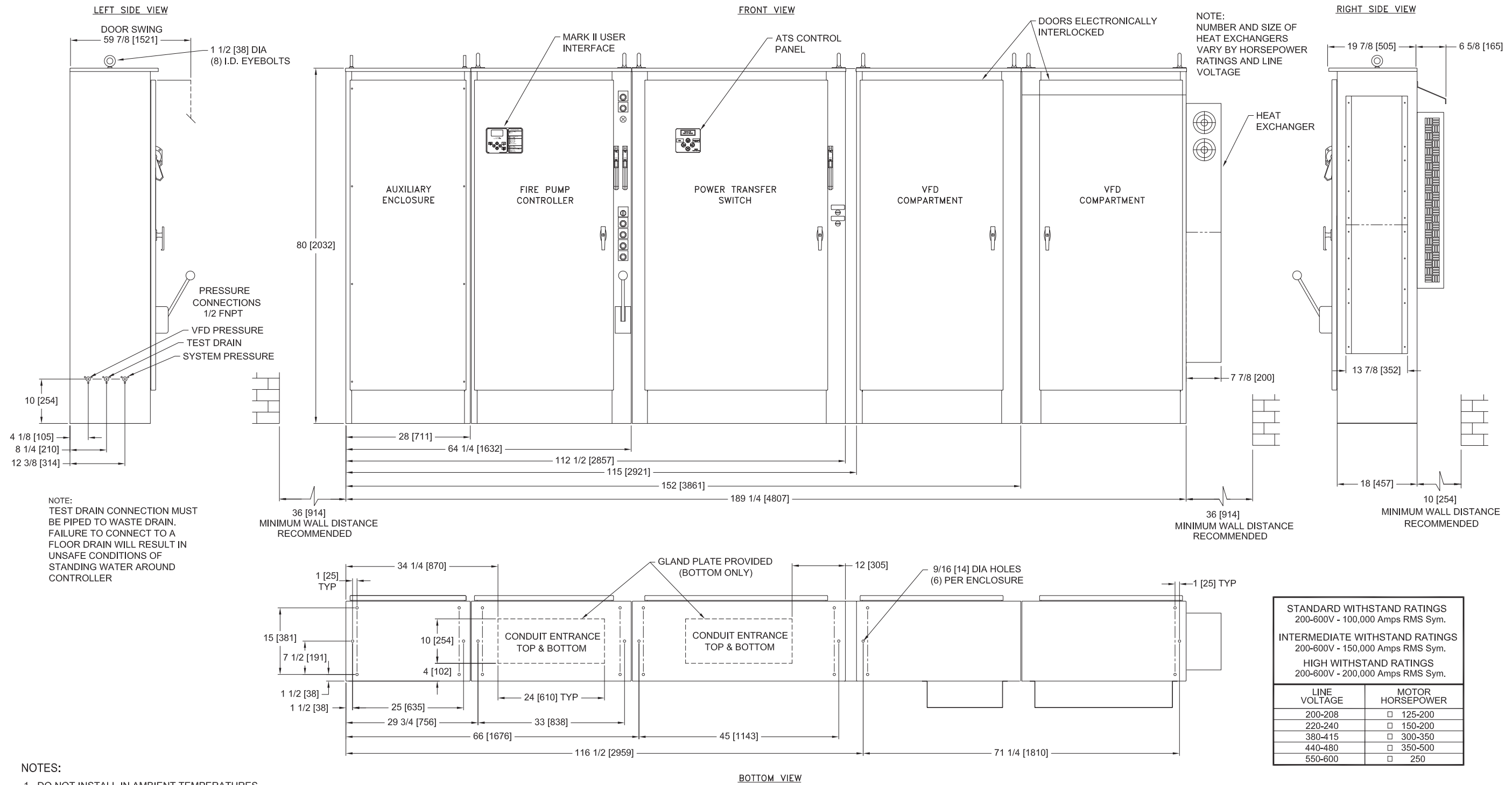


MarkIIxG Electric Fire Pump Controllers - Variable Speed Starting with Autotransformer Bypass and Power Transfer Switch



STANDARD WITHSTAND RATINGS 200-600V - 100,000 Amps RMS Sym.	
INTERMEDIATE WITHSTAND RATINGS 200-600V - 150,000 Amps RMS Sym.	
HIGH WITHSTAND RATINGS 200-600V - 200,000 Amps RMS Sym.	
LINE VOLTAGE	MOTOR HORSEPOWER
200-208	□ 125-200
220-240	□ 150-200
380-415	□ 300-350
440-480	□ 350-500
550-600	□ 250

- NOTES:
- DO NOT INSTALL IN AMBIENT TEMPERATURES ABOVE 40°C [104°F] OR BELOW 5°C [41°F]
  - ALL DIMENSIONS IN INCHES [MM]
  - FOR HORSEPOWER OR WITHSTAND RATINGS NOT LISTED IN THIS TABLE, REFER TO ED3110M-01
  - DRAWINGS USED FOR CONSTRUCTION PURPOSES MUST BE OBTAINED FROM FIRETROL OR THE LOCAL FIRETROL REPRESENTATIVE
  - ALL CONTROLLERS TO BE A MINIMUM NEMA TYPE 12
  - VFD COMPARTMENT SECTION IS SHIPPED SEPARATELY FROM FIRE PUMP COMPARTMENT SECTION

BOTTOM VIEW

THIRD ANGLE PROJECTION	SIZE B	BY	DATE
	DRAWN BY	JMW	5-8-19
	FINAL APPROVAL	CIR	5-8-19



RELEASED	-	276990	JMW	CIR	5-8-19
REVISION DESCRIPTION	REV	ECN NO	BY	APP	DATE
ENCLOSURE DIMENSIONS		FTA3110M WITH FTA950		DRAWING NUMBER	
VFD ELECTRIC FIRE PUMP CONTROLLER WITH AUTOTRANSFORMER BYPASS AND POWER TRANSFER SWITCH				DD-3110M-15	
DWG REV	-	ECN NO	276990	SHEET 1 OF 1	

All rights reserved. The drawing and the information contained or depicted herein are the sole property of Firetrol, Inc. Copies are communicated to the recipient in strict confidence and may not be retransmitted, published, reproduced, copied or used in any manner, including as the basis for the manufacture or sale of any products, without the express prior written consent of Firetrol, Inc.