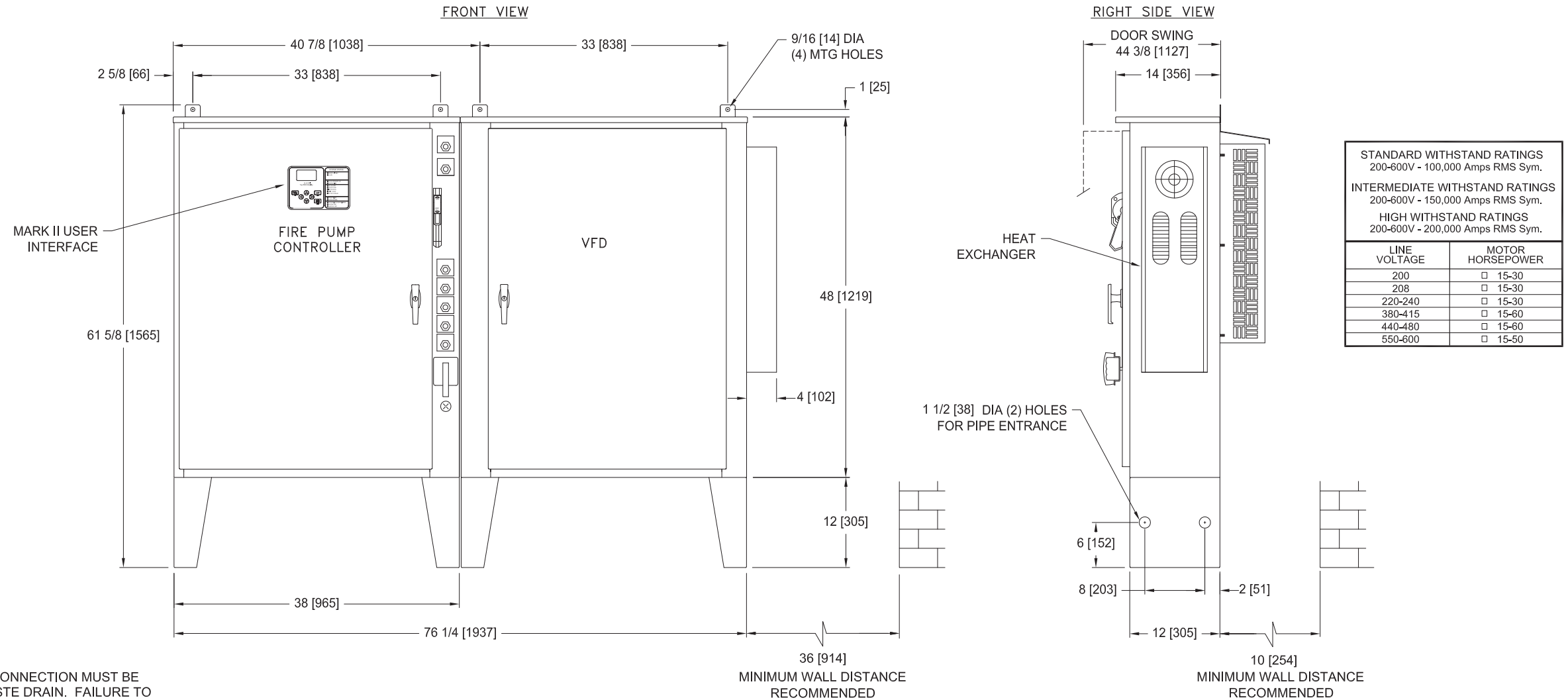
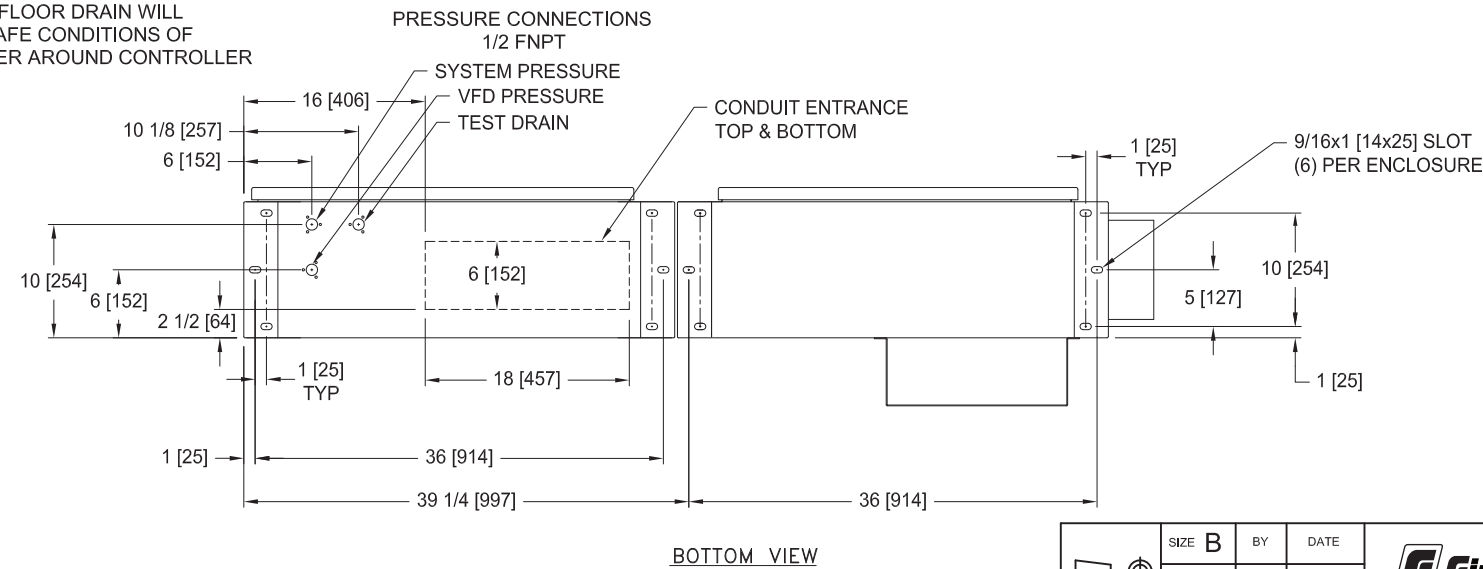


MarkIIxG Electric Fire Pump Controllers - Variable Speed Starting with Solid State Soft Starting Bypass



NOTE:
TEST DRAIN CONNECTION MUST BE PIPED TO WASTE DRAIN. FAILURE TO CONNECT TO A FLOOR DRAIN WILL RESULT IN UNSAFE CONDITIONS OF STANDING WATER AROUND CONTROLLER



- NOTES:
- DO NOT INSTALL IN AMBIENT TEMPERATURES ABOVE 40°C [104°F] OR BELOW 5°C [41°F]
 - ALL DIMENSIONS IN INCHES [MM]
 - FOR HORSEPOWER OR WITHSTAND RATINGS NOT LISTED IN THIS TABLE, REFER TO ED3130M-01
 - DRAWINGS USED FOR CONSTRUCTION PURPOSES MUST BE OBTAINED FROM FIRETROL OR THE LOCAL FIRETROL REPRESENTATIVE
 - ALL CONTROLLERS TO BE A MINIMUM NEMA TYPE 12

THIRD ANGLE PROJECTION	SIZE	B	BY	DATE
	DRAWN BY	JMW	5-15-19	
	FINAL APPROVAL	CIR	5-15-19	

Firetrol, Inc.
© Firetrol, Inc. Not for construction. Subject to change without notice.

RELEASED	-	278060	JMW	CIR	5-15-19
REVISION DESCRIPTION	REV	ECN NO	BY	APP	DATE
ENCLOSURE DIMENSIONS	FTA3130M				
VFD ELECTRIC FIRE PUMP CONTROLLER WITH SOFT START BYPASS	DRAWING NUMBER DD3130M-01				
DWG REV	-	ECN NO	278060	SHEET 1 OF 1	