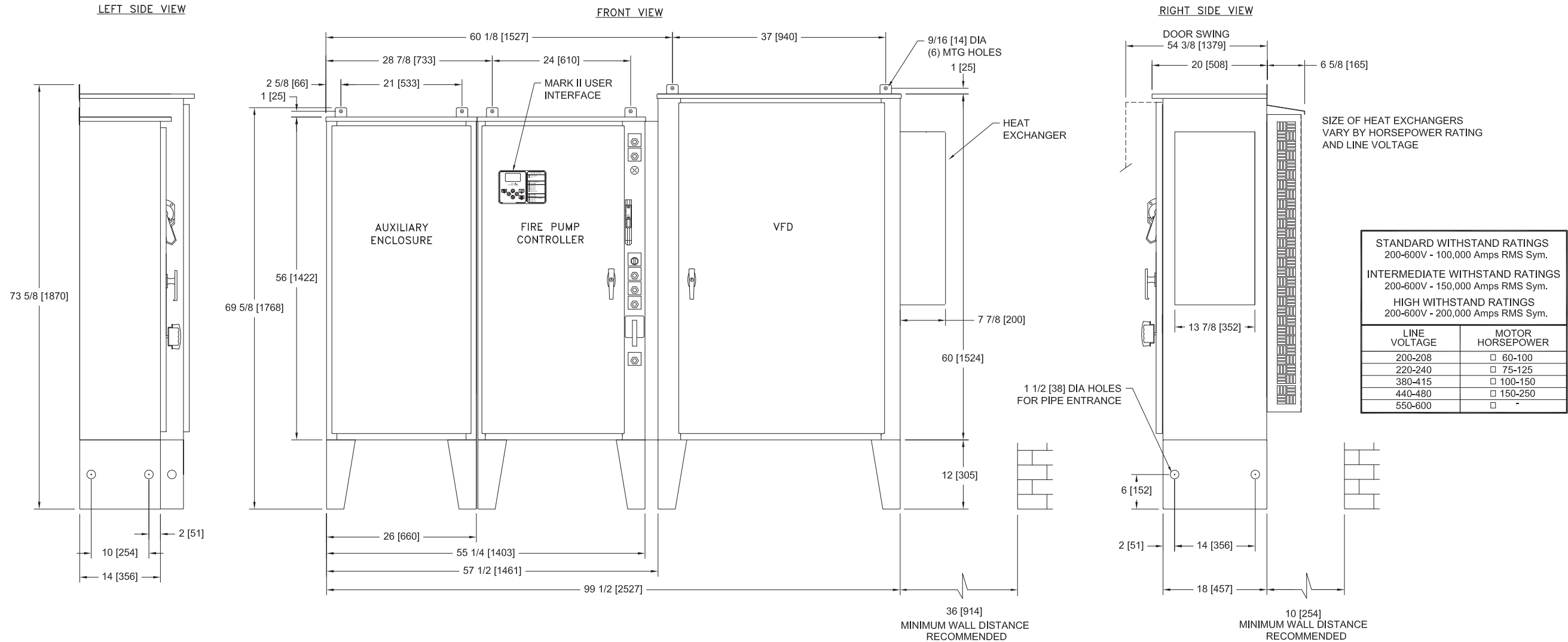
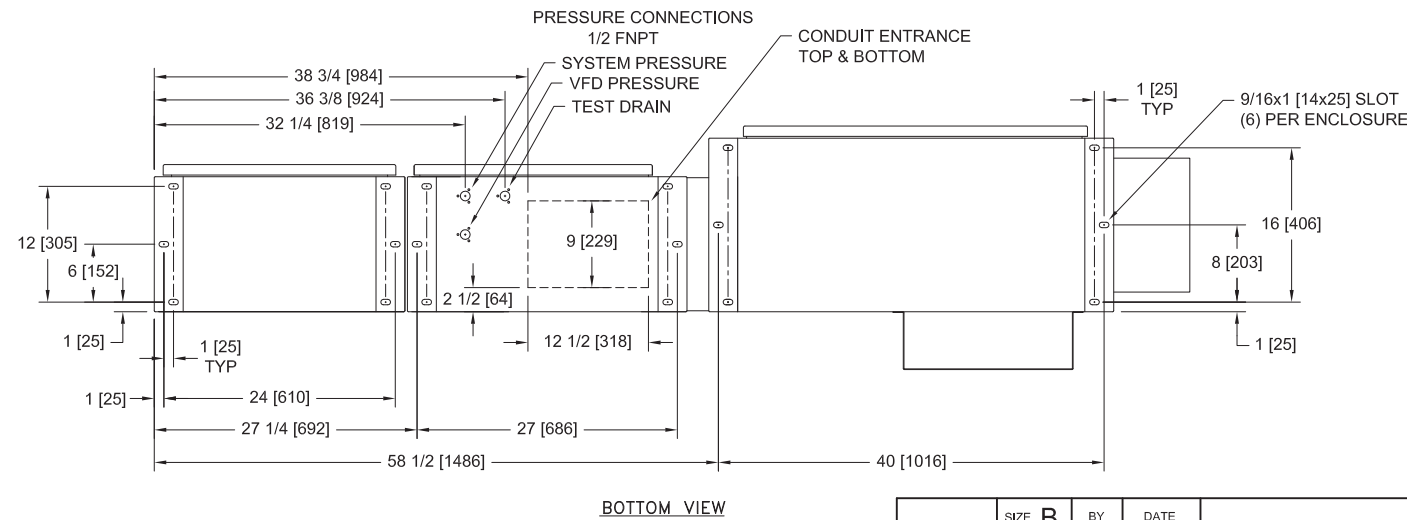


MarkIIx6 Electric Fire Pump Controllers - Variable Speed Starting with Solid State Soft Starting Bypass



NOTE:
TEST DRAIN CONNECTION MUST BE PIPED TO WASTE DRAIN. FAILURE TO CONNECT TO A FLOOR DRAIN WILL RESULT IN UNSAFE CONDITIONS OF STANDING WATER AROUND CONTROLLER



NOTES:

- DO NOT INSTALL IN AMBIENT TEMPERATURES ABOVE 40°C [104°F] OR BELOW 5°C [41°F]
- ALL DIMENSIONS IN INCHES [MM]
- FOR HORSEPOWER OR WITHSTAND RATINGS NOT LISTED IN THIS TABLE, REFER TO ED3130M-01
- DRAWINGS USED FOR CONSTRUCTION PURPOSES MUST BE OBTAINED FROM FIRETROL OR THE LOCAL FIRETROL REPRESENTATIVE
- ALL CONTROLLERS TO BE A MINIMUM NEMA TYPE 12
- VFD COMPARTMENT SECTION IS SHIPPED SEPARATELY FROM FIRE PUMP SECTION.

THIRD ANGLE PROJECTION	SIZE	B	BY	DATE
	DRAWN BY	JMW	5-21-19	
	FINAL APPROVAL	CIR	5-21-19	



REVISED CHART		A	278060	JMW	CIR	5-21-19
REVISION DESCRIPTION		REV	ECN NO	BY	APP	DATE
ENCLOSURE DIMENSIONS		FTA3130M				
VFD ELECTRIC FIRE PUMP CONTROLLER WITH SOFT START BYPASS		DRAWING NUMBER DD3130M-04				
DWG REV	A	ECN NO	278060	SHEET 1 OF 1		