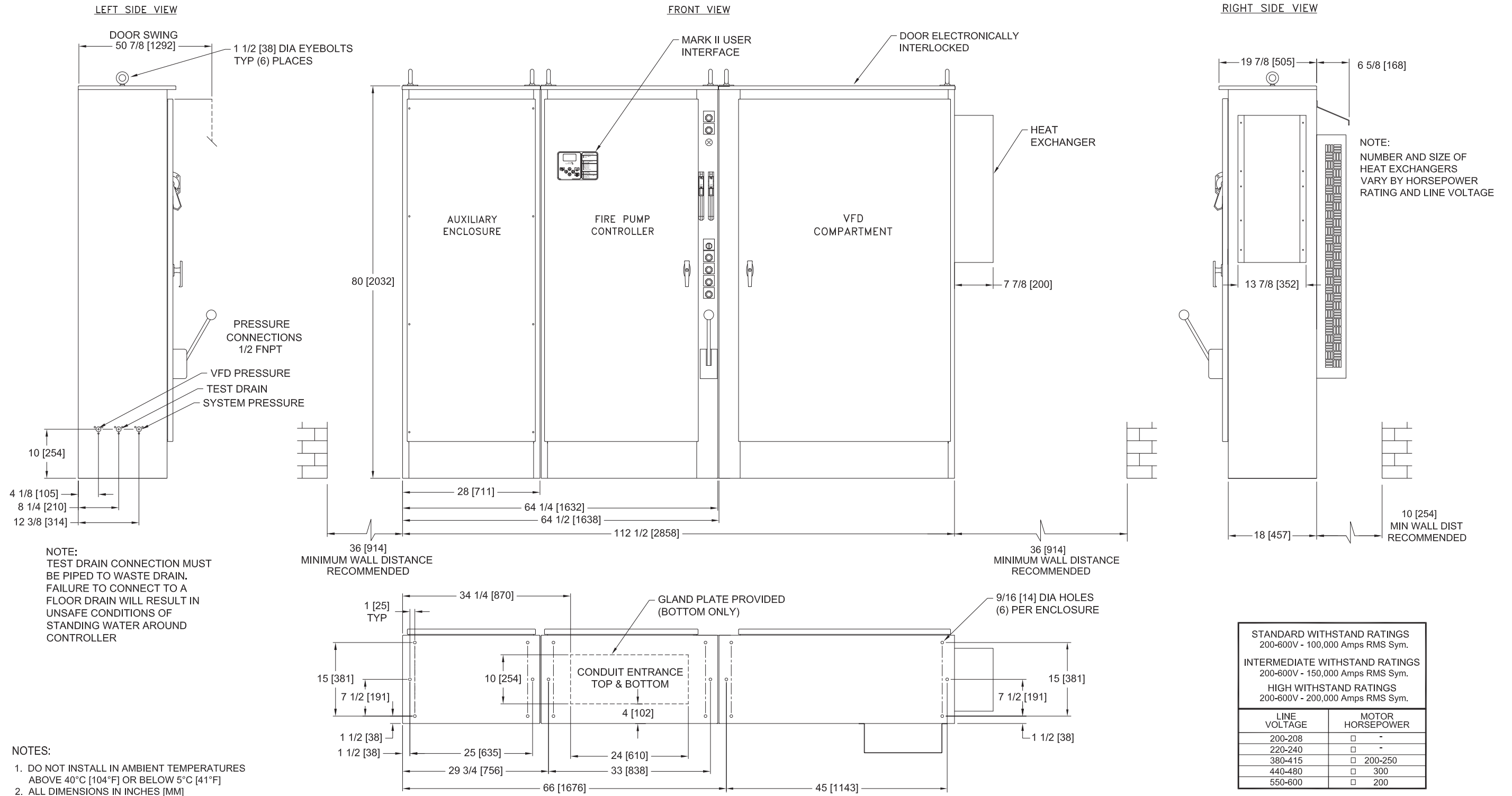




MarkIIx6 Electric Fire Pump Controllers - Variable Speed Starting with Solid State Soft Starting Bypass



NOTE:
NUMBER AND SIZE OF
HEAT EXCHANGERS
VARY BY HORSEPOWER
RATING AND LINE VOLTAGE

NOTE:
TEST DRAIN CONNECTION MUST
BE PIPED TO WASTE DRAIN.
FAILURE TO CONNECT TO A
FLOOR DRAIN WILL RESULT IN
UNSAFE CONDITIONS OF
STANDING WATER AROUND
CONTROLLER

- NOTES:
- DO NOT INSTALL IN AMBIENT TEMPERATURES ABOVE 40°C [104°F] OR BELOW 5°C [41°F]
 - ALL DIMENSIONS IN INCHES [MM]
 - FOR HORSEPOWER OR WITHSTAND RATINGS NOT LISTED IN THIS TABLE, REFER TO ED3130M-01
 - DRAWINGS USED FOR CONSTRUCTION PURPOSES MUST BE OBTAINED FROM FIRETROL OR THE LOCAL FIRETROL REPRESENTATIVE
 - ALL CONTROLLERS TO BE A MINIMUM NEMA TYPE 12
 - VFD COMPARTMENT SECTION IS SHIPPED SEPARATELY FROM FIRE PUMP COMPARTMENT SECTION

STANDARD WITHSTAND RATINGS 200-600V - 100,000 Amps RMS Sym.	
INTERMEDIATE WITHSTAND RATINGS 200-600V - 150,000 Amps RMS Sym.	
HIGH WITHSTAND RATINGS 200-600V - 200,000 Amps RMS Sym.	
LINE VOLTAGE	MOTOR HORSEPOWER
200-208	□ -
220-240	□ -
380-415	□ 200-250
440-480	□ 300
550-600	□ 200

	SIZE B	BY	DATE	<p>© Firetrol, Inc. Not for construction. Subject to change without notice.</p>	REVISED THE ORIENTATION OF THE VFD SECTION	A	278060	JMW	CIR	5-15-19	
	DRAWN BY	JMW	5-15-19		REVISION DESCRIPTION	REV	ECN NO	BY	APP	DATE	
	FINAL APPROVAL	CIR	5-15-19		ENCLOSURE DIMENSIONS	FTA3130M		DRAWING NUMBER			
					VFD ELECTRIC FIRE PUMP CONTROLLER WITH SOFT START BYPASS			DD3130M-06			
					DWG REV	A	ECN NO	278060	SHEET 1 OF 1		

All rights reserved. The drawing and the information contained or depicted herein are the sole property of Firetrol, Inc. Copies are communicated to the recipient in strict confidence and may not be retransmitted, published, reproduced, copied or used in any manner, including as the basis for the manufacture or sale of any products, without the express prior written consent of Firetrol, Inc.