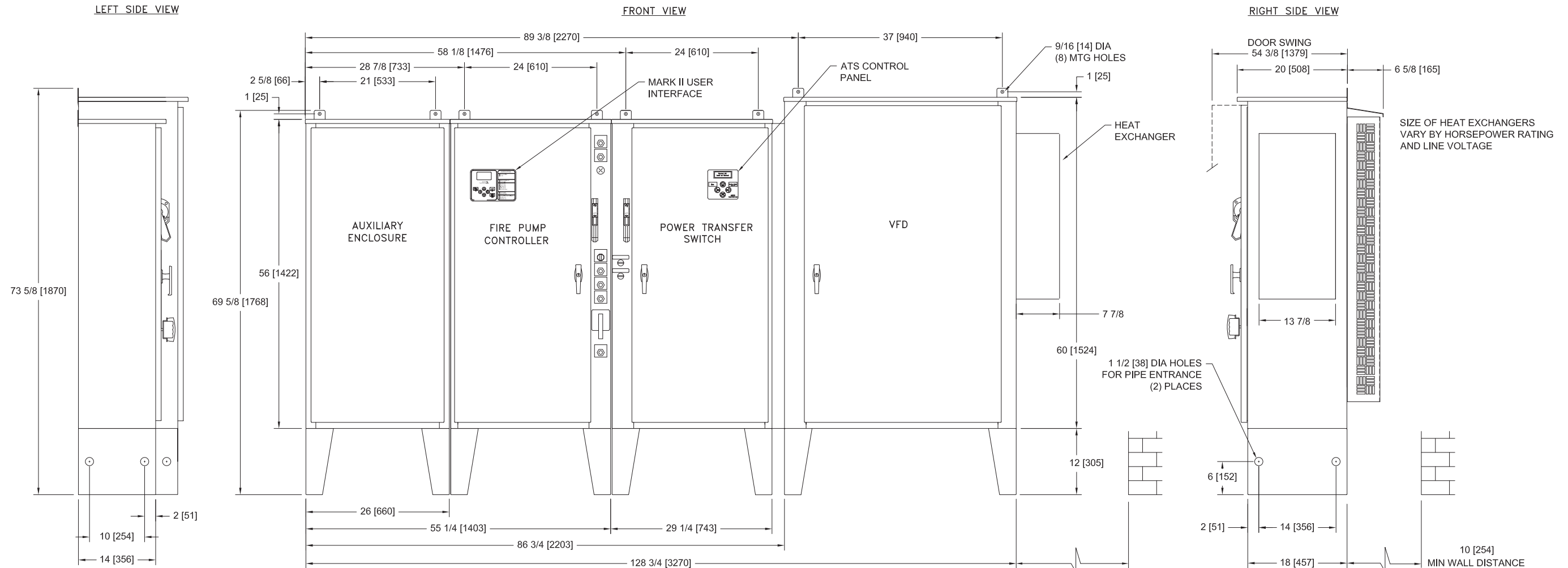
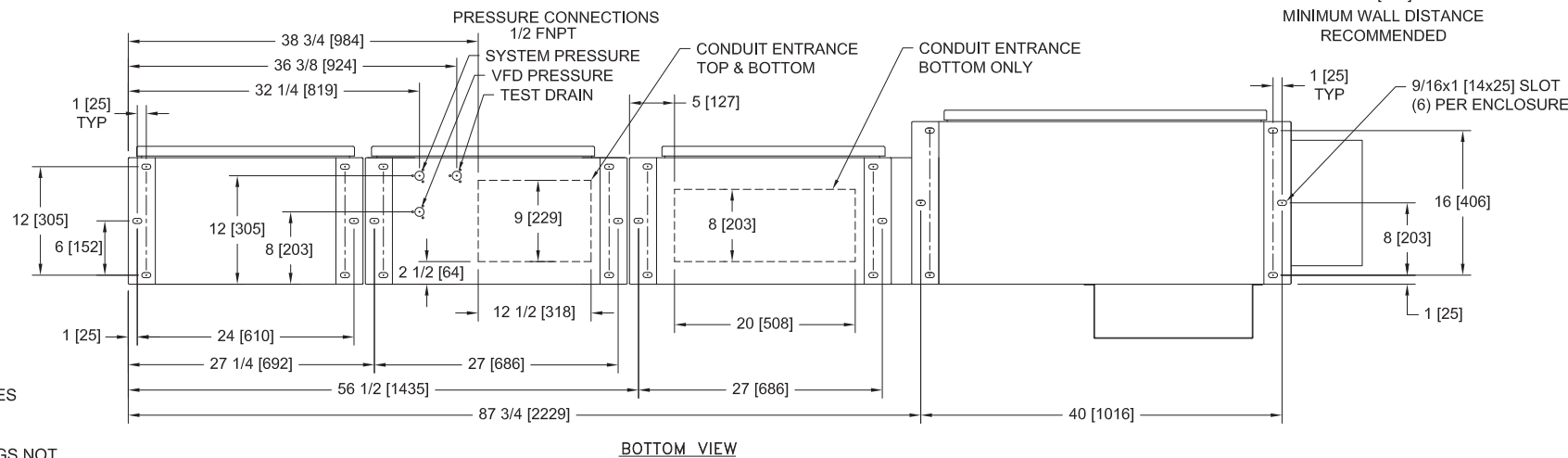


MarkIIxG Electric Fire Pump Controllers - Variable Speed Starting with Solid State Soft Starting Bypass and Power Transfer Switch



NOTE:
TEST DRAIN CONNECTION MUST BE PIPED TO WASTE DRAIN. FAILURE TO CONNECT TO A FLOOR DRAIN WILL RESULT IN UNSAFE CONDITIONS OF STANDING WATER AROUND CONTROLLER

- NOTES:
- DO NOT INSTALL IN AMBIENT TEMPERATURES ABOVE 40°C [104°F] OR BELOW 5°C [41°F]
 - ALL DIMENSIONS IN INCHES [MM]
 - FOR HORSEPOWER OR WITHSTAND RATINGS NOT LISTED IN THIS TABLE, REFER TO ED3130M-01
 - DRAWINGS USED FOR CONSTRUCTION PURPOSES MUST BE OBTAINED FROM FIRETROL OR THE LOCAL FIRETROL REPRESENTATIVE
 - ALL CONTROLLERS TO BE A MINIMUM NEMA TYPE 12
 - VFD COMPARTMENT SECTION IS SHIPPED SEPARATELY FROM FIRE PUMP SECTION.



STANDARD WITHSTAND RATINGS	
200-600V - 100,000 Amps RMS Sym.	
INTERMEDIATE WITHSTAND RATINGS	
200-600V - 150,000 Amps RMS Sym.	
HIGH WITHSTAND RATINGS	
200-600V - 200,000 Amps RMS Sym.	
LINE VOLTAGE	MOTOR HORSEPOWER
200-208	□ 60-100
220-240	□ 75-125
380-415	□ 100-150
440-480	□ 150-250
550-600	□ -

THIRD ANGLE PROJECTION	SIZE	B	BY	DATE
	DRAWN BY	JMW	5-15-19	
	FINAL APPROVAL	CIR	5-15-19	



REVISED CHARTS		A	278060	JMW	CIR	5-15-19
REVISION DESCRIPTION		REV	ECN NO	BY	APP	DATE
ENCLOSURE DIMENSIONS		FTA3130M WITH FTA950				
VFD ELECTRIC FIRE PUMP CONTROLLER WITH SOFT START BYPASS AND POWER TRANSFER SWITCH		DRAWING NUMBER DD3130M-14				
DWG REV	A	ECN NO	278060	SHEET 1 OF 1		

All rights reserved. The drawing and the information contained or depicted herein are the sole property of Firetrol, Inc. Copies are communicated to the recipient in strict confidence and may not be retransmitted, published, reproduced, copied or used in any manner, including as the basis for the manufacture or sale of any products, without the express prior written consent of Firetrol, Inc.