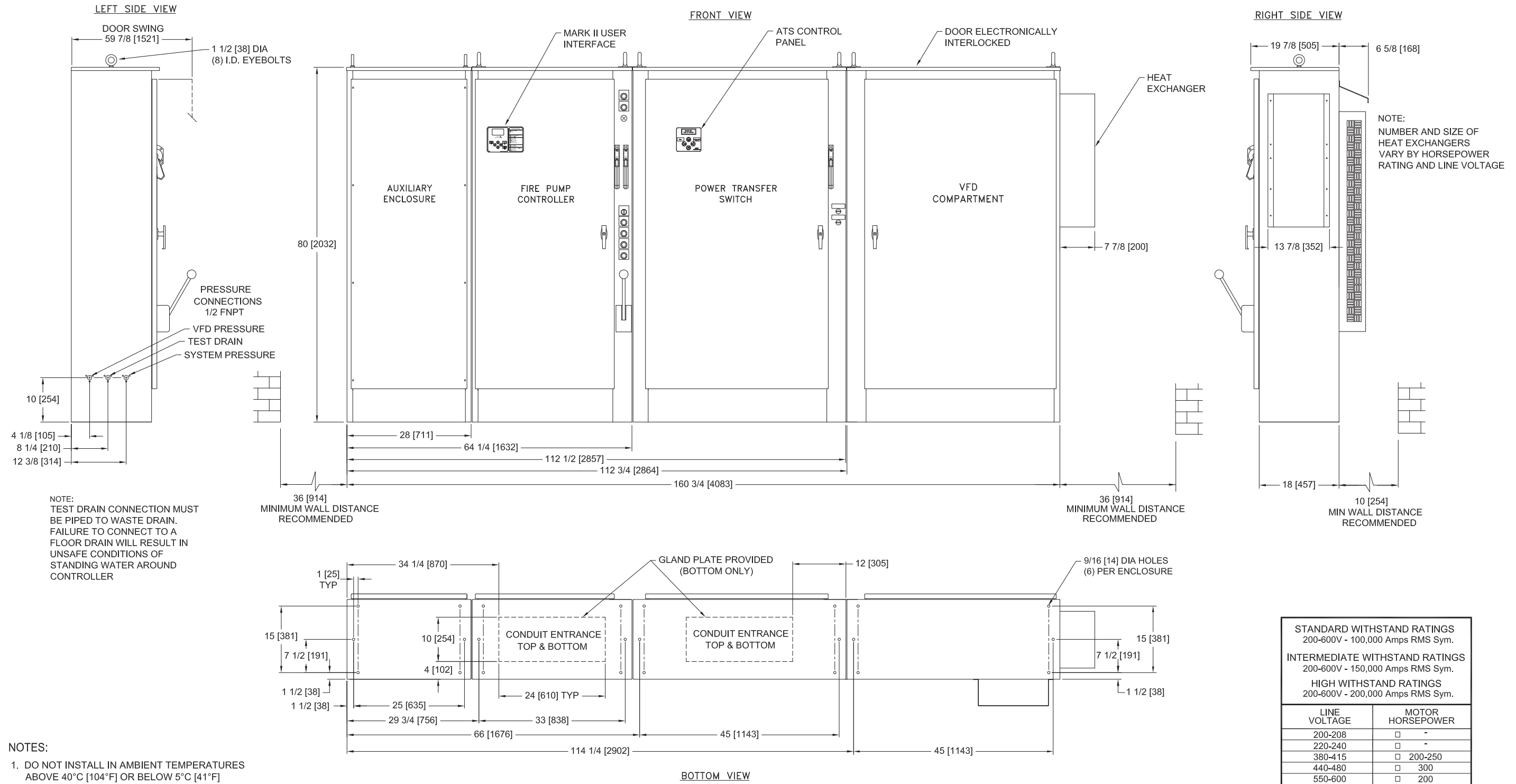


MarkIIx6 Electric Fire Pump Controllers - Variable Speed Starting with Solid State Soft Starting Bypass and Power Transfer Switch



STANDARD WITHSTAND RATINGS	
200-600V - 100,000 Amps RMS Sym.	
INTERMEDIATE WITHSTAND RATINGS	
200-600V - 150,000 Amps RMS Sym.	
HIGH WITHSTAND RATINGS	
200-600V - 200,000 Amps RMS Sym.	
LINE VOLTAGE	MOTOR HORSEPOWER
200-208	□ -
220-240	□ -
380-415	□ 200-250
440-480	□ 300
550-600	□ 200

- NOTES:
- DO NOT INSTALL IN AMBIENT TEMPERATURES ABOVE 40°C [104°F] OR BELOW 5°C [41°F]
 - ALL DIMENSIONS IN INCHES [MM]
 - FOR HORSEPOWER OR WITHSTAND RATINGS NOT LISTED IN THIS TABLE, REFER TO ED3130M-01
 - DRAWINGS USED FOR CONSTRUCTION PURPOSES MUST BE OBTAINED FROM FIRETROL OR THE LOCAL FIRETROL REPRESENTATIVE
 - ALL CONTROLLERS TO BE A MINIMUM NEMA TYPE 12
 - VFD COMPARTMENT SECTION IS SHIPPED SEPARATELY FROM FIRE PUMP COMPARTMENT SECTION

	SIZE	B	BY	DATE	<p>© Firetrol, Inc. Not for construction. Subject to change without notice.</p>	REVISION DESCRIPTION	A	278060	JMW	CIR	5-15-19
	DRAWN BY	JMW	5-15-19	REVISION		REV	ECN NO	BY	APP	DATE	
	FINAL APPROVAL	CIR	5-15-19	ENCLOSURE DIMENSIONS		FTA3130M		DRAWING NUMBER		DD3130M-16	
				VFD ELECTRIC FIRE PUMP CONTROLLER WITH SOFT START BYPASS AND POWER TRANSFER SWITCH		DWG REV	A	ECN NO	278060	SHEET 1 OF 1	

All rights reserved. The drawing and the information contained or depicted herein are the sole property of Firetrol, Inc. Copies are communicated to the recipient in strict confidence and may not be retransmitted, published, reproduced, copied or used in any manner, including as the basis for the manufacture or sale of any products, without the express prior written consent of Firetrol, Inc.