



Mark IIx6 Limited Service Electric Fire Pump Controllers

Field Connections

FTA750/FTA976

Across The Line Starting With Power Transfer Switch

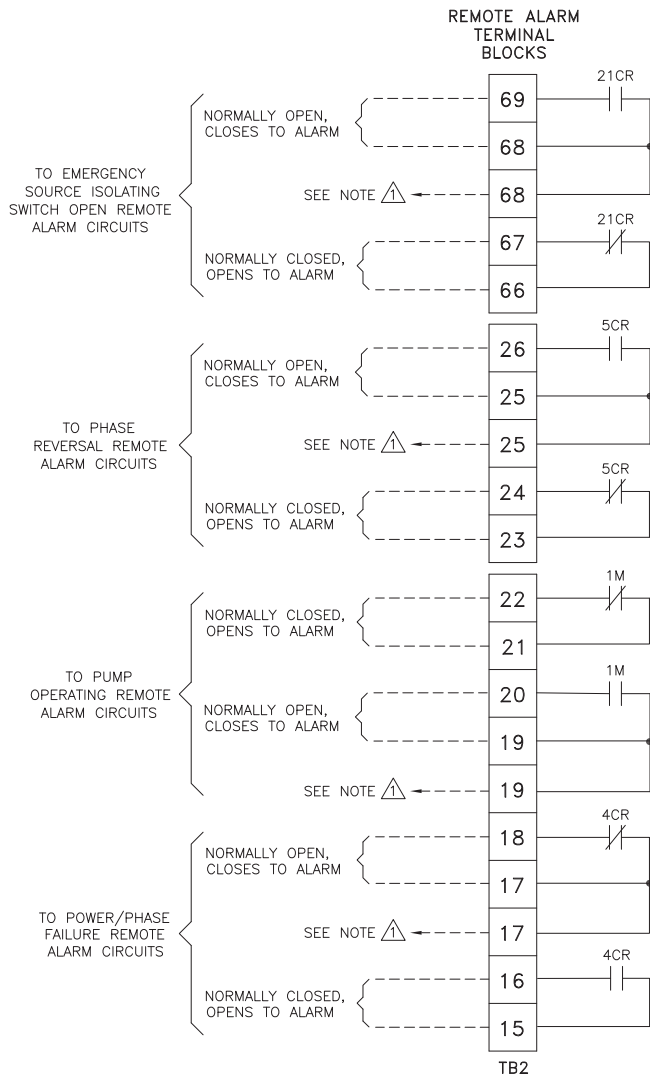
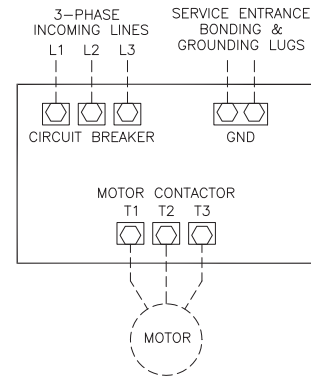
LINE TERMINALS—WIRE CAPACITY AND QUANTITY (CU) ①

MAXIMUM MOTOR HORSEPOWER 200–208V	HORSEPOWER 220–600V	WIRE SIZE (CU) PER PHASE	
		WIRE SIZE (CU)	WIRE SIZE SERVICE ENTRANCE GROUND LUG (CU) ②
25	30	(1) #14 AWG—#1/0 AWG (1) 2.5 MM ² – 50 MM ²	(2) #14 AWG—#2/0 AWG (2) 2.5 MM ² – 70 MM ²
30	---	(1) #2 AWG—#4/0 AWG (1) 35 MM ² – 100 MM ²	(2) #14 AWG—#2/0 AWG (2) 2.5 MM ² – 70 MM ²

MOTOR TERMINALS—WIRE CAPACITY AND QUANTITY (CU) ①

MAXIMUM MOTOR HORSEPOWER 200–208V	HORSEPOWER 220–600V	WIRE SIZE (CU) PER PHASE	
		WIRE SIZE (CU)	WIRE SIZE SERVICE ENTRANCE GROUND LUG (CU) ②
30	30	(1) #6 AWG—#2/0 AWG (1) 16 MM ² – 70 MM ²	

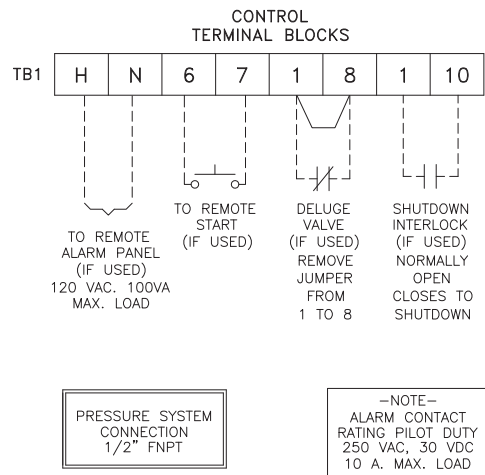
- ① FOR CORRECT WIRE SIZING, REFER TO **NATIONAL ELECTRICAL CODE**, NFPA 70.
- ② WHEN REQUIRED BY AUTHORITY HAVING JURISDICTION.



- #### NOTES
- Incoming line terminals are provided to accommodate wire sizes at 125% of motor full load current per NFPA 70–2002, *National Electrical Code*, Table 430–150, Section 695.6(c), and Table 310–16, 75' rated Copper conductors.
 - Controller is phase rotation sensitive. Incoming lines L1, L2 and L3 must be in ABC, right hand rotation sequence for proper operation of the phase monitor.
 - Motor connections shown are typical. Since motor connections vary widely, refer to the motor connection diagram for specific wiring arrangement.

- △ SPARE TERMINALS PROVIDED FOR PARALLEL CONNECTION OF REMOTE ALARMS (IF REQUIRED)
- NOTE: TERMINALS FOR CUSTOMER CONNECTIONS REQUIRE 3.5MM SLOTTED SCREW DRIVER

TERMINAL TIGHTENING TORQUE		
TERMINAL TYPE	WIRE SIZE	TIGHTENING TORQUE
CONTROL AND ALARM TERMINALS	#14–12 AWG [2.5–4 MM ²]	5.6 lb-in [.6 Nm]



- PRESSURE SYSTEM CONNECTION 1/2" FNPT
- NOTE— ALARM CONTACT RATING PILOT DUTY 250 VAC, 30 VDC 10 A. MAX. LOAD

THIRD ANGLE PROJECTION				UPDATED TITLE BLOCK				DRAWING NUMBER					
SIZE	A	BY	DATE	REVISION DESCRIPTION	REV	ECN NO	JMW	TEF	09-19-19	FC750-55	DWG REV A	ECN NO 280928	SHEET 1 OF 1
DRAWN BY	TEF	09-16-04		FIELD CONNECTIONS		FTA750							
FINAL APPROVAL	TEF	09-16-04		LIMITED SERVICE FIRE PUMP CONTROLLER WITH POWER TRANSFER SWITCH									

All rights reserved. The drawing and the information contained or depicted herein are the sole property of Firetrol, Inc. Copies are communicated to the recipient in strict confidence and may not be retransmitted, published, reproduced, copied or used in any manner, including as the basis for the manufacture or sale of any products, without the express prior written consent of Firetrol, Inc.