

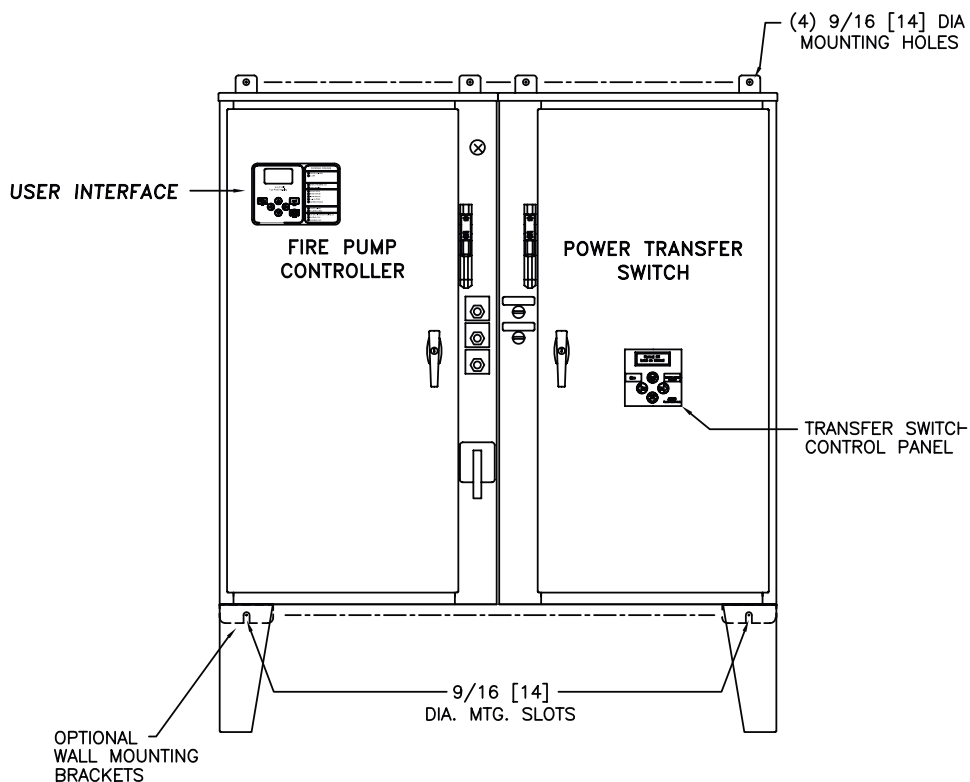


Mark IIx6 Electric Fire Pump Controller

Standard Drawing Package

FTA1000/FTA950

Across The Line Starting
With Power Transfer Switch



(DRAWINGS INCLUDED IN THIS PACKAGE ARE FOR STANDARD CONTROLLERS. ACTUAL "AS BUILT" DRAWINGS MAY DIFFER FROM THOSE SEEN HERE).

Firetrol, Inc.

3412 Apex Peakway
Apex, North Carolina 27502
P 919 460-5200
F 919 460 5250
www.firetrol.com

While every precaution has been taken to ensure accuracy and completeness herein, Firetrol, Inc. assumes no responsibility, and disclaims all liability, for damages resulting from use of this information or for any errors or omissions. Specifications and drawings are subject to change without notice. ©2019 Firetrol, Inc., All Rights Reserved.

Publication IM1000TSA Rev. K



Mark IIx6 Electric Fire Pump Controllers

Dimensional Drawing
Lookup Table
FTA1000
Across The Line Starting



UNITS WITHOUT POWER TRANSFER SWITCH

DRG. NO.	SHORT-CIRCUIT (WITHSTAND) CURRENT RATING				
	42,000 Amps RMS Sym. Maximum	65,000 Amps RMS Sym. Maximum	200,000 Amps RMS Sym. Maximum		
	DD1000-59	DD1000-59	DD1000-51	DD1000-55	DD1000-59
LINE VOLTAGE	H.P. RANGE	H.P. RANGE	H.P. RANGE	H.P. RANGE	H.P. RANGE
200	---	250	3 - 60	75 - 100	125 - 200
208	---	250	3 - 60	75 - 125	150 - 200
220 - 240	---	300	3 - 60	75 - 125	150 - 250
380 - 415	---	400 - 500	3 - 100	125 - 200	250 - 350
440 - 480	---	600	3 - 150	200 - 250	300 - 500
550 - 600	---	---	3 - 150	200 - 300	---

UNITS WITH POWER TRANSFER SWITCH

DRG. NO.	SHORT-CIRCUIT (WITHSTAND) CURRENT RATING				
	42,000 Amps RMS Sym. Maximum	65,000 Amps RMS Sym. Maximum	200,000 Amps RMS Sym. Maximum		
	DD1000-65	DD1000-65	DD1000-61	DD1000-63	DD1000-65
LINE VOLTAGE	H.P. RANGE	H.P. RANGE	H.P. RANGE	H.P. RANGE	H.P. RANGE
200	---	250	3 - 60	75 - 100	125 - 200
208	---	250	3 - 60	75 - 125	150 - 200
220 - 240	---	300	3 - 60	75 - 125	150 - 250
380 - 415	---	400 - 500	3 - 100	125 - 200	250 - 350
440 - 480	---	600	3 - 150	200 - 250	300 - 500
550 - 600	---	---	3 - 150	200 - 300	---

CONSULT FACTORY FOR VOLTAGES OR HORSEPOWERS NOT SHOWN

<div> THIRD ANGLE PROJECTION</div> <div> Firetrol, Inc. © Firetrol, Inc. Not for construction. Subject to change without notice.</div>				UPDATED TITLE BLOCK				C	280404	JMW	TEF	10-21-19
				SEE ECN				B	237286	TEF	TEF	05-24-12
				REVISION DESCRIPTION				REV	ECN NO	BY	APP	DATE
				LOOKUP TABLE		FTA1000		DRAWING NUMBER ED1000-02				
DIMENSIONAL DRAWING LOOKUP TABLE FULL VOLTAGE FIRE PUMP CONTROLLERS WITH HP/VOLTAGE/WITHSTAND RATING				DWG REV C								
				ECN NO 280404		SHEET 1 OF 1						

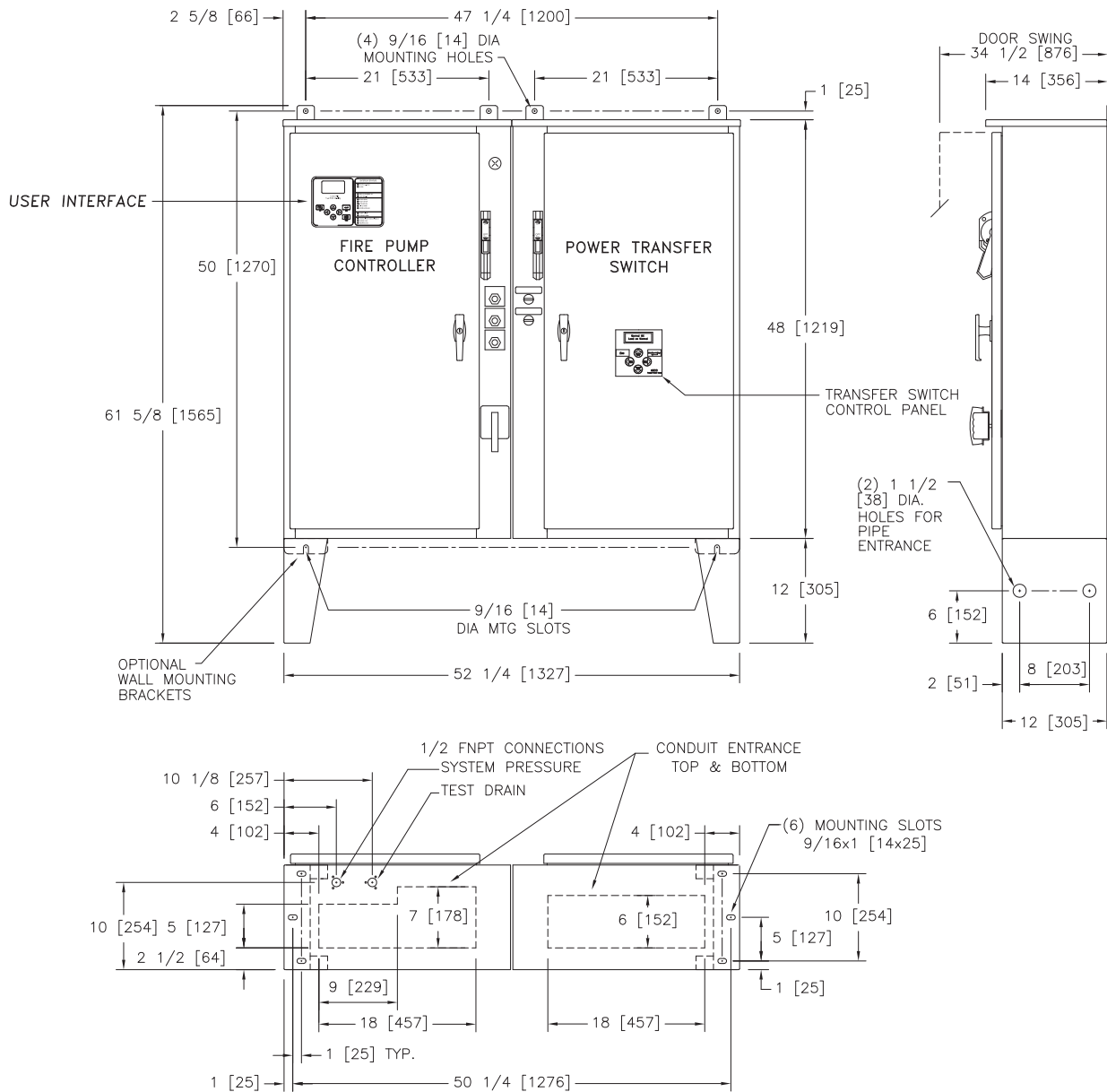
All rights reserved. The drawing and the information contained or depicted herein are the sole property of Firetrol, Inc. Copies are communicated to the recipient in strict confidence and may not be retransmitted, published, reproduced, copied or used in any manner, including as the basis for the manufacture or sale of any products, without the express prior written consent of Firetrol, Inc.



Mark IIxG Electric Fire Pump Controllers

Dimensions and Shipping Weight FTA1000/950

Across The Line Starting
With Power Transfer Switch



DO NOT INSTALL IN AMBIENT TEMPERATURES
BELOW 41°F [5°C].

ALL DIMENSIONS - INCHES [MM]
SHIPPING WEIGHT - POUNDS [KG]

THIS DIMENSION DRAWING COVERS FTA1000
CONTROLLERS AT THE HORSEPOWER, VOLTAGE
AND WITHSTAND RATINGS AS LISTED IN THE
TABLE. FOR OTHER HORSEPOWER OR
WITHSTAND RATINGS, REFER TO ED1000-02

SPECIFICATIONS AND DIMENSIONS SUBJECT TO
CHANGE WITHOUT NOTICE. DO NOT USE FOR
CONSTRUCTION. REQUEST CONSTRUCTION
DRAWINGS FROM FIRETROL OR YOUR LOCAL
FIRETROL REPRESENTATIVE.

STANDARD WITHSTAND RATINGS	
200-600V - 100,000 Amps RMS Sym.	
INTERMEDIATE WITHSTAND RATINGS	
200-600V - 150,000 Amps RMS Sym.	
HIGH WITHSTAND RATINGS	
200-600V - 200,000 Amps RMS Sym.	
LINE VOLTAGE	MOTOR HORSEPOWER
200	□ 3-60
208	□ 3-60
220-240	□ 3-60
380-415	□ 3-100
440-480	□ 3-150
550-600	□ 3-150

APPROXIMATE
SHIPPING WEIGHT
495 [225]

THIRD ANGLE PROJECTION	SIZE A	BY	DATE
DRAWN BY	TEF	06-19-02	
FINAL APPROVAL	TEF	06-19-02	



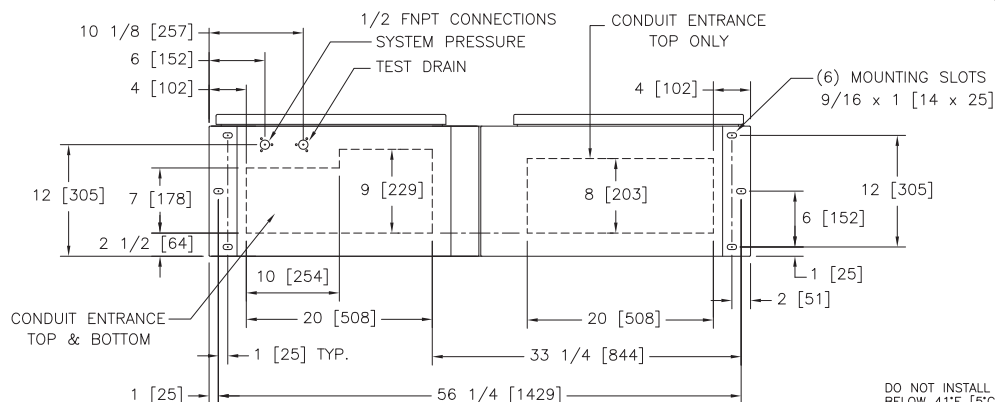
© Firetrol, Inc. Not for construction.
Subject to change without notice.

UPDATED TITLE BLOCK		C	280404	JMW	TEF	08-19-19
ADDED COMPONENTS TO MEET FM REQUIREMENTS		B	228499	JC	TEF	08-10-10
REVISION DESCRIPTION		REV	ECN NO	BY	APP	DATE
DIMENSIONS & SHIPPING WEIGHT		FTA1000 WITH FTA950				
FULL VOLTAGE FIRE PUMP CONTROLLER WITH POWER TRANSFER SWITCH		DRAWING NUMBER DD1000-61				
		DWG REV	C	ECN NO	280404	SHEET 1 OF 1

All rights reserved. The drawing and the information contained or depicted herein are the sole property of Firetrol, Inc. Copies are communicated to the recipient in strict confidence and may not be retransmitted, published, reproduced, copied or used in any manner, including as the basis for the manufacture or sale of any products, without the express prior written consent of Firetrol, Inc.



Across The Line Starting With Power Transfer Switch



APPROXIMATE SHIPPING WEIGHT
535 [243]

SPECIFICATIONS AND DIMENSIONS SUBJECT TO CHANGE WITHOUT NOTICE. DO NOT USE FOR CONSTRUCTION. REQUEST CONSTRUCTION DRAWINGS FROM FIRETROL OR YOUR LOCAL FIRETROL REPRESENTATIVE.

© Firetrol, Inc. Not for construction.
Subject to change without notice.

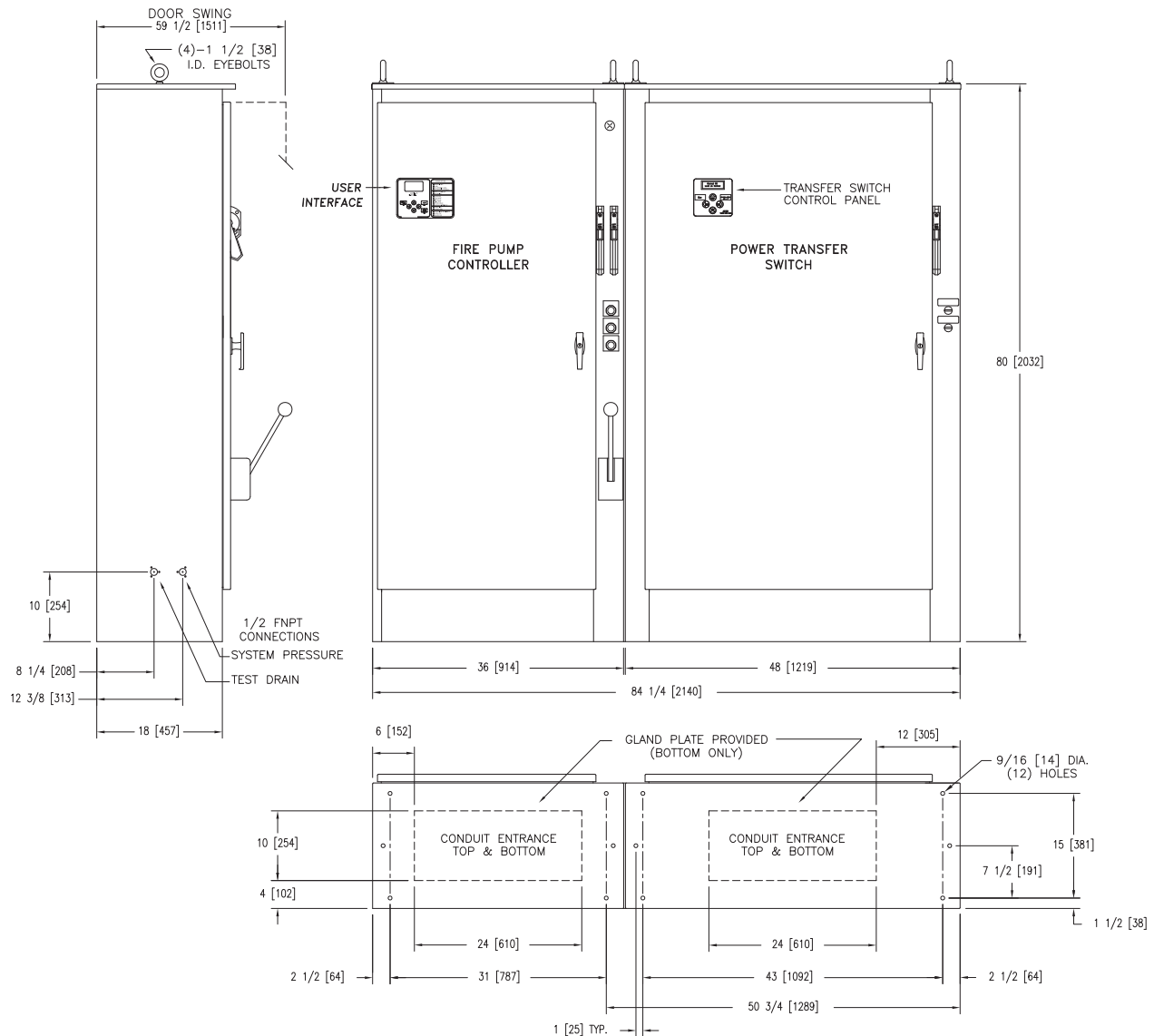
UPDATED TITLE BLOCK		D	280404	JMW	TEF	08-19-12
REVISED MOTOR HORSEPOWER CHART		C	237364	JMW	TEF	05-31-12
REVISION DESCRIPTION		REV	ECN NO	BY	APP	DATE
DIMENSIONS & SHIPPING WEIGHT		FTA1000 WITH FTA950 DD1000-63				
FULL VOLTAGE FIRE PUMP CONTROLLER WITH POWER TRANSFER SWITCH		DRAWING NUMBER DD1000-63				
		DWG REV	D	ECN NO	280404	SHEET 1 OF 1



Mark IIxG Electric Fire Pump Controllers

Dimensions and Shipping Weight FTA1000/950

Across The Line Starting
With Power Transfer Switch



	STANDARD WITHSTAND RATINGS 200–600V 100,000 Amps RMS Sym.		STANDARD INTERMEDIATE WITHSTAND RATINGS 200–480V 65,000 Amps RMS Sym.	
	INTERMEDIATE WITHSTAND RATINGS 200–600V 150,000 Amps RMS Sym.		STANDARD LOW WITHSTAND RATINGS 550–600V 42,000 Amps RMS Sym.	
	HIGH WITHSTAND RATINGS 200–600V 200,000 Amps RMS Sym.			
LINE VOLTAGE	MOTOR HORSEPOWER	MOTOR HORSEPOWER	MOTOR HORSEPOWER	MOTOR HORSEPOWER
200	□ 125–200	□ 250	□ 250	
208	□ 150–200	□ 250	□ 250	
220–240	□ 150–250	□ 300	□ 300	
380–415	□ 250–350	□ 400–500	□ 400–500	
440–480	□ 300–500	□ 600	□ 600	
550–600	□ ---	□ ---	□ ---	

APPROXIMATE SHIPPING WEIGHT
1500 [680]

DO NOT INSTALL IN AMBIENT TEMPERATURES BELOW 41°F [5°C].

ALL DIMENSIONS – INCHES [MM]
SHIPPING WEIGHT – POUNDS [KG]

THIS DIMENSION DRAWING COVERS FTA1000 CONTROLLERS AT THE HORSEPOWER, VOLTAGE AND WITHSTAND RATINGS AS LISTED IN THE TABLE. FOR OTHER HORSEPOWER OR WITHSTAND RATINGS, REFER TO ED1000-02

SPECIFICATIONS AND DIMENSIONS SUBJECT TO CHANGE WITHOUT NOTICE. DO NOT USE FOR CONSTRUCTION. REQUEST CONSTRUCTION DRAWINGS FROM FIRETROL OR YOUR LOCAL FIRETROL REPRESENTATIVE.

	SIZE A	BY	DATE
	DRAWN BY	TEF	07-24-02
	FINAL APPROVAL	TEF	07-24-02



© Firetrol, Inc. Not for construction.
Subject to change without notice.

UPDATED TITLE BLOCK		E	280404	JMW	TEF	08-21-19
REVISED MOTOR HORSEPOWER CHART		D	237364	JMW	TEF	08-21-19
REVISION DESCRIPTION		REV	ECN NO	BY	APP	DATE
DIMENSIONS & SHIPPING WEIGHT		FTA1000 WITH FTA950		DRAWING NUMBER		
FULL VOLTAGE FIRE PUMP CONTROLLER WITH POWER TRANSFER SWITCH				DD1000-65		
DWG REV E		ECN NO 280404		SHEET A OF A		

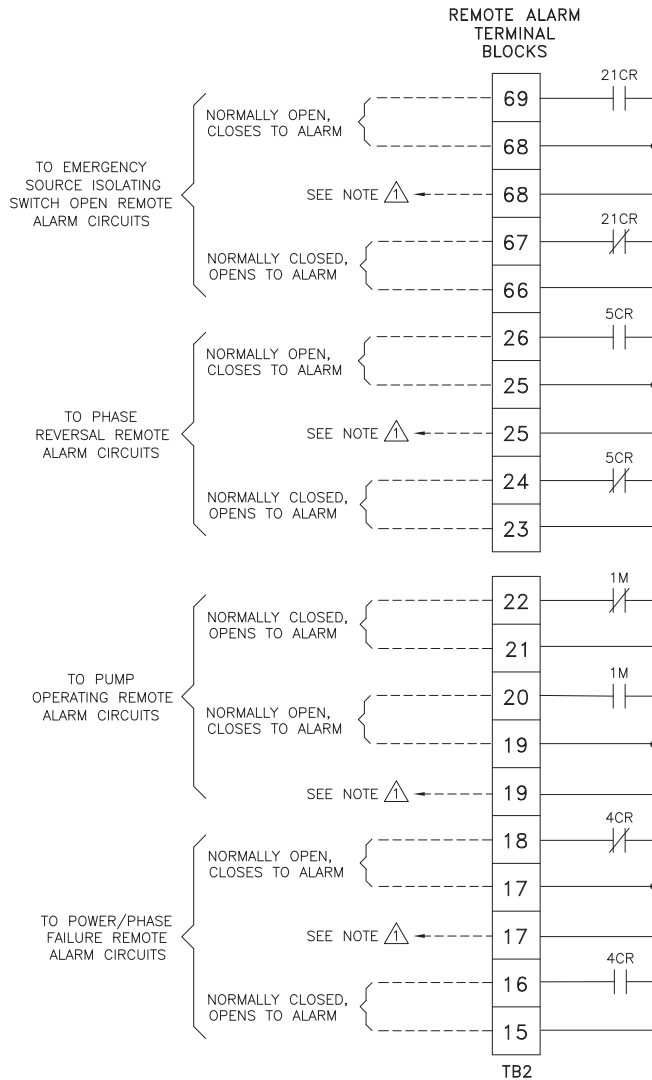
All rights reserved. The drawing and the information contained or depicted herein are the sole property of Firetrol, Inc. Copies are communicated to the recipient in strict confidence and may not be retransmitted, published, reproduced, copied or used in any manner, including as the basis for the manufacture or sale of any products, without the express prior written consent of Firetrol, Inc.



Mark IIxG Electric Fire Pump Controllers

Field Connections FTA1000/950

Across The Line Starting
W/ Power Transfer Switch

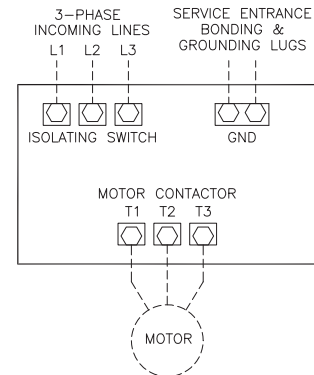


△ SPARE TERMINALS PROVIDED FOR PARALLEL
CONNECTION OF REMOTE ALARMS (IF REQUIRED)

NOTE: TERMINALS FOR CUSTOMER CONNECTIONS REQUIRE
3.5MM SLOTTED SCREW DRIVER

TERMINAL TIGHTENING TORQUE		
TERMINAL TYPE	WIRE SIZE	TIGHTENING TORQUE
CONTROL AND ALARM TERMINALS	#14-12 AWG [2.5-4 MM ²]	5.6 lb-in [.6 Nm]

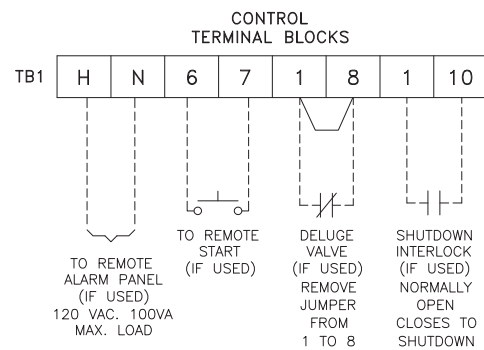
—NOTE—
ALARM CONTACT
RATING PILOT DUTY
250 VAC, 30 VDC
10 A. MAX. LOAD



NOTES

- 1- Incoming line terminals are provided to accommodate wire sizes at 125% of motor full load current per NFPA 70-2008, *National Electrical Code*, Table 430-250, Section 695.6(c), and Table 310-16, 75° rated Copper conductors.
- 2- Controller is phase rotation sensitive. Incoming lines L1, L2 and L3 must be in ABC, right hand rotation sequence for proper operation of the phase monitor.
- 3- Motor connections shown are typical. Since motor connections vary widely, refer to the motor connection diagram for specific wiring arrangement.
- 4- For Incoming line terminals and motor terminals field wire capacity refer to drawing FC1000-51

NOTE: USE COPPER CONDUCTORS ONLY FOR ALL CONNECTIONS



PRESSURE SYSTEM
CONNECTION
1/2" FNPT

THIRD ANGLE PROJECTION	SIZE A	BY	DATE
DRAWN BY	TEF	05-06-02	
FINAL APPROVAL	TEF	05-06-02	



© Firetrol, Inc. Not for construction.
Subject to change without notice.

UPDATED TITLE BLOCK		B	280404	JMW	TEF	09-09-13
ADD NOTE FOR COPPER CONDUCTORS ONLY, UPDATED LOGO & TITLE BLOCK		A	226253	JC	TEF	12-08-09
REVISION DESCRIPTION		REV	ECN NO	BY	APP	DATE
FIELD CONNECTIONS		FTA1000 WITH FTA900, FTA950				
FULL VOLTAGE FIRE PUMP CONTROLLER WITH POWER TRANSFER SWITCH		DRAWING NUMBER FC1000-55				
DWG REV B		ECN NO 280404		SHEET 1 OF 2		

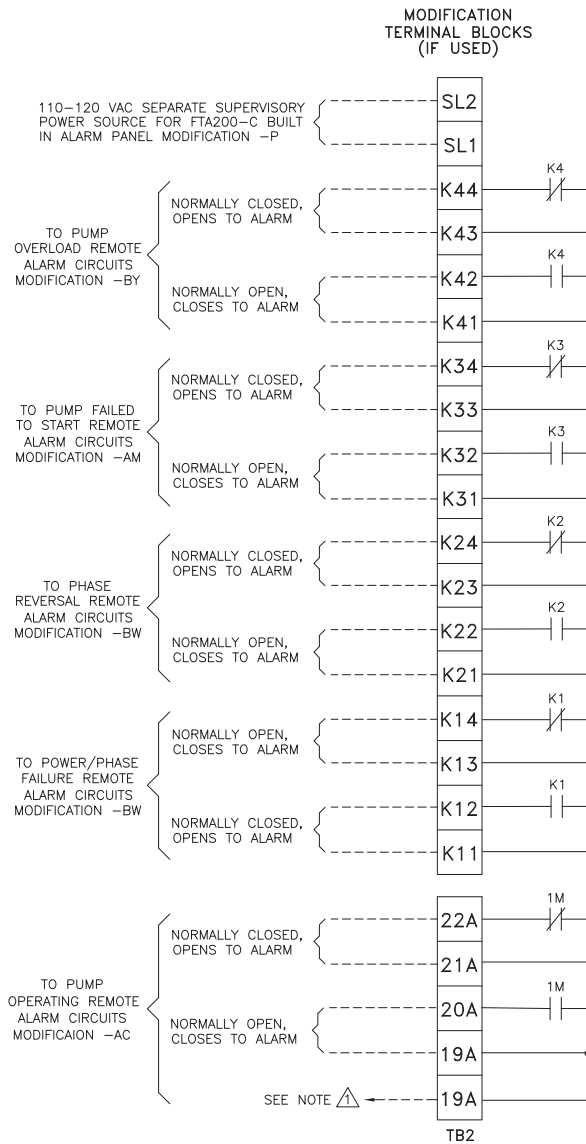
All rights reserved. The drawing and the information contained or depicted herein are the sole property of Firetrol, Inc. Copies are communicated to the recipient in strict confidence and may not be retransmitted, published, reproduced, copied or used in any manner, including as the basis for the manufacture or sale of any products, without the express prior written consent of Firetrol, Inc.



Mark IIxG Electric Fire Pump Controllers

Field Connections FTA1000/950

Across The Line Starting
W/ Power Transfer Switch



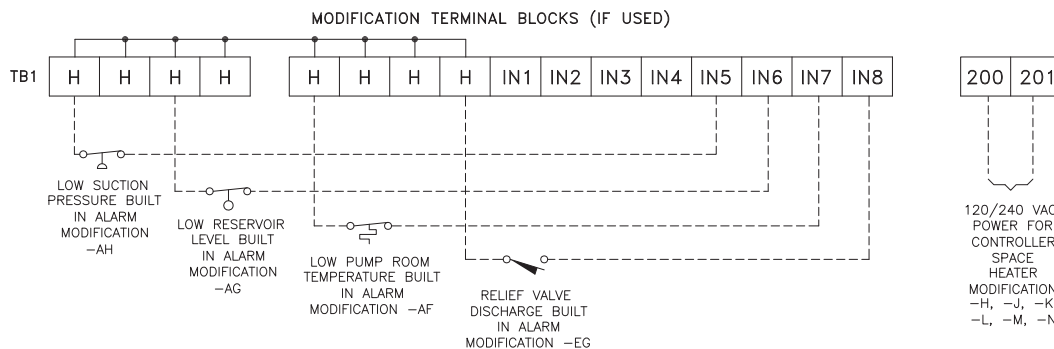
SPARE TERMINALS PROVIDED FOR PARALLEL
CONNECTION OF REMOTE ALARMS (IF REQUIRED)

NOTE: TERMINALS FOR CUSTOMER CONNECTIONS REQUIRE
3.5MM SLOTTED SCREW DRIVER

TERMINAL TIGHTENING TORQUE		
TERMINAL TYPE	WIRE SIZE	TIGHTENING TORQUE
CONTROL AND ALARM TERMINALS	#14-12 AWG [2.5-4 MM ²]	5.6 lb-in [.6 Nm]

-NOTE-
ALARM CONTACT
RATING PILOT DUTY
250 VAC, 30 VDC
10 A. MAX. LOAD

NOTE: USE COPPER CONDUCTORS ONLY FOR ALL CONNECTIONS



120/240 VAC
POWER FOR
CONTROLLER
SPACE
HEATER
MODIFICATION
-H, -J, -K,
-L, -M, -N

THIRD ANGLE PROJECTION	SIZE	BY	DATE
DRAWN BY	TEF	05-06-02	
FINAL APPROVAL	TEF	05-06-02	



© Firetrol, Inc. Not for construction.
Subject to change without notice.

UPDATED TITLE BLOCK		B	280404	JMW	TEF	09-09-13
ADD NOTE FOR COPPER CONDUCTORS ONLY, UPDATED LOGO & TITLE BLOCK		A	226253	JC	TEF	12-08-09
REVISION DESCRIPTION		REV	ECN NO	BY	APP	DATE
FIELD CONNECTIONS		FTA1000 WITH FTA900, FTA950				
FULL VOLTAGE FIRE PUMP CONTROLLER WITH POWER TRANSFER SWITCH		DRAWING NUMBER FC1000-55				
DWG REV B		ECN NO 280404		SHEET 2 OF 2		

All rights reserved. The drawing and the information contained or depicted herein are the sole property of Firetrol, Inc. Copies are communicated to the recipient in strict confidence and may not be retransmitted, published, reproduced, copied or used in any manner, including as the basis for the manufacture or sale of any products, without the express prior written consent of Firetrol, Inc.



Mark IIx6 Electric FirePump Controllers

Field Connections

FTA1000

Across The Line Starting
Line & Motor Wire Terminal Capacity

LINE TERMINALS—WIRE CAPACITY AND QUANTITY (CU) ¹

MAXIMUM MOTOR HORSEPOWER						WIRE SIZE (CU) PER PHASE	WIRE SIZE SERVICE ENTRANCE GROUND LUG (CU) ²
200V	208V	220–240V	380–415V	440–480V	550–600V		
20	20	25	40	50	60	(1) #14 AWG—#1/0 AWG (1) 2.5 MM ² —50 MM ²	(2) #14 AWG—#2/0 AWG (2) 2.5 MM ² —70 MM ²
40	40	40	75	100	125	(1) #4 AWG—300 kcmil (1) 25 MM ² —150 MM ²	(2) #14 AWG—#2/0 AWG (2) 2.5 MM ² —70 MM ²
60	60	60	100	150	150	(1) #4 AWG—300 kcmil (1) 25 MM ² —150 MM ²	(2) #6 AWG—250 kcmil (2) 16 MM ² —120 MM ²
100	100	100	150	250	300	(1) 250 kcmil—500 kcmil (1) 120 MM ² —240 MM ²	(2) #6 AWG—250 kcmil (2) 16 MM ² —120 MM ²
---	125	125	200	---	---	(2) #3/0 AWG—250 kcmil (2) 95 MM ² —120 MM ²	(2) #6 AWG—250 kcmil (2) 16 MM ² —120 MM ²
200	200	250	350	500	---	(3) #2/0 AWG—400 kcmil (3) 70 MM ² —200 MM ²	(2) #6 AWG—250 kcmil (2) 16 MM ² —120 MM ²
250	250	300	500	600	---	(4) #4/0 AWG—500 kcmil (4) 100 MM ² —240 MM ²	(2) #6 AWG—250 kcmil (2) 16 MM ² —120 MM ²

MOTOR TERMINALS—WIRE CAPACITY AND QUANTITY (CU) ¹

MAXIMUM MOTOR HORSEPOWER						WIRE SIZE (CU) PER PHASE
200V	208V	220–240V	380–415V	440–480V	550–600V	
30	30	40	60	75	100	(1) #6 AWG—#2/0 AWG (1) 16 MM ² —70 MM ²
50	50	60	75	125	150	(1) #6 AWG—250 kcmil (1) 16 MM ² —120 MM ²
75	75	100	150	200	250	(1) #4 AWG—400 kcmil (1) 25 MM ² —200 MM ²
100	100	---	---	250	300	(2) #4 AWG—500 kcmil (2) 25 MM ² —240 MM ²
200	200	200	350	500	---	(2) 250 kcmil—500 kcmil (2) 120 MM ² —240 MM ²
250	250	300	500	600	---	(3) #2/0 AWG—500 kcmil (3) 70 MM ² —240 MM ²

¹ FOR CORRECT WIRE SIZING, REFER TO
NATIONAL ELECTRICAL CODE, NFPA 70.

² WHEN REQUIRED BY AUTHORITY HAVING
JURISDICTION.

	SIZE A	BY	DATE	UPDATED LINE TERMINAL HP / VOLTAGE CHART CHANGED TO XT4 BREAKERS				D	270091	TEF	TEF	11/19/17
	DRAWN BY	JC	02-13-12	REVISION DESCRIPTION				REV	ECN NO	BY	APP	DATE
	FINAL APPROVAL	TEF	02-13-12	FIELD CONNECTIONS				FTA1000				DRAWING NUMBER
					FULL VOLTAGE FIRE PUMP CONTROLLER				FC1000-51			
				LINE AND MOTOR FIELD WIRE TERMINAL CAPACITY				DWG REV	E	ECN NO	280404	SHEET 1 OF 1



© Firetrol, Inc. Not for construction.
Subject to change without notice.

All rights reserved. The drawing and the information contained or depicted herein are the sole property of Firetrol, Inc. Copies are communicated to the recipient in strict confidence and may not be retransmitted, published, reproduced, copied or used in any manner, including as the basis for the manufacture or sale of any products, without the express prior written consent of Firetrol, Inc.

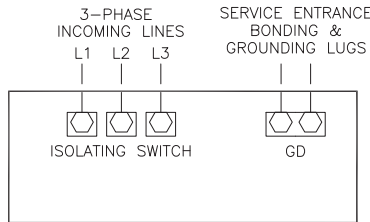


Power Transfer Switches

Field Connections

FTA950

Assembled With Electric
Fire Pump Controllers



NOTE

Incoming line terminals are provided to accommodate wire sizes at 125% of motor full load current per NFPA 70, *National Electrical Code*, Table 430-250, Section 695.6(c), and Table 310-16, 75° rated Copper conductors.

—USE COPPER CONDUCTORS ONLY—

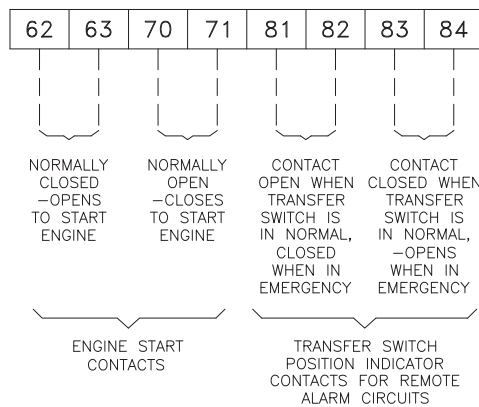
LINE TERMINALS—WIRE CAPACITY AND QUANTITY (CU) ¹

MAXIMUM MOTOR HORSEPOWER						WIRE SIZE (CU) PER PHASE	WIRE SIZE SERVICE ENTRANCE GROUND LUG (CU) ²
200V	208V	220-240V	380-415V	440-480V	550-600V		
20	20	25	40	50	60	(1) #14 AWG—#1/0 AWG (1) 2.5 MM ² —50 MM ²	(2) #14 AWG—#2/0 AWG (2) 2.5 MM ² —70 MM ²
40	40	40	75	100	125	(1) #4 AWG—300 kcmil (1) 25 MM ² —150 MM ²	(2) #14 AWG—#2/0 AWG (2) 2.5 MM ² —70 MM ²
60	60	60	100	150	150	(1) #4 AWG—300 kcmil (1) 25 MM ² —150 MM ²	(2) #6 AWG—250 kcmil (2) 16 MM ² —120 MM ²
100	100	100	150	250	300	(1) 250 kcmil—500 kcmil (1) 120 MM ² —240 MM ²	(2) #6 AWG—250 kcmil (2) 16 MM ² —120 MM ²
---	125	125	200	---	---	(2) #3/0 AWG—250 kcmil (2) 95 MM ² —120 MM ²	(2) #6 AWG—250 kcmil (2) 16 MM ² —120 MM ²
200	200	250	350	500	---	(3) #2/0 AWG—400 kcmil (3) 70 MM ² —200 MM ²	(2) #6 AWG—250 kcmil (2) 16 MM ² —120 MM ²
250	250	300	500	600	---	(4) #4/0 AWG—500 kcmil (4) 100 MM ² —240 MM ²	(2) #6 AWG—250 kcmil (2) 16 MM ² —120 MM ²

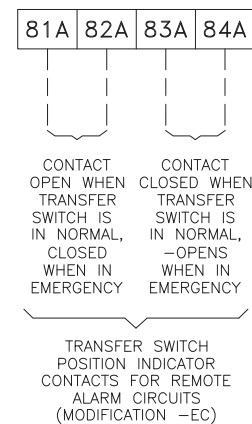
¹ FOR CORRECT WIRE SIZING, REFER TO
NATIONAL ELECTRICAL CODE, NFPA 70.

² WHEN REQUIRED BY AUTHORITY HAVING
JURISDICTION.

CONTROL AND ALARM TERMINAL BLOCKS



MODIFICATION ALARM TERMINAL BLOCKS





NOTE: CONTROL AND ALARM TERMINALS FOR CUSTOMER
CONNECTIONS REQUIRE 3.5MM SLOTTED SCREW DRIVER

—NOTE—
ENGINE START
CONTACT RATING
1/2 AMP, 30VDC

TERMINAL WIRE CAPACITY	
TERMINAL TYPE	WIRE SIZE
CONTROL AND ALARM TERMINALS	#14-12 AWG [2.5-4 MM ²]

—NOTE—
ALARM CONTACT
RATING
PILOT DUTY
240 VAC, 28 VDC
5 AMP MAX. LOAD

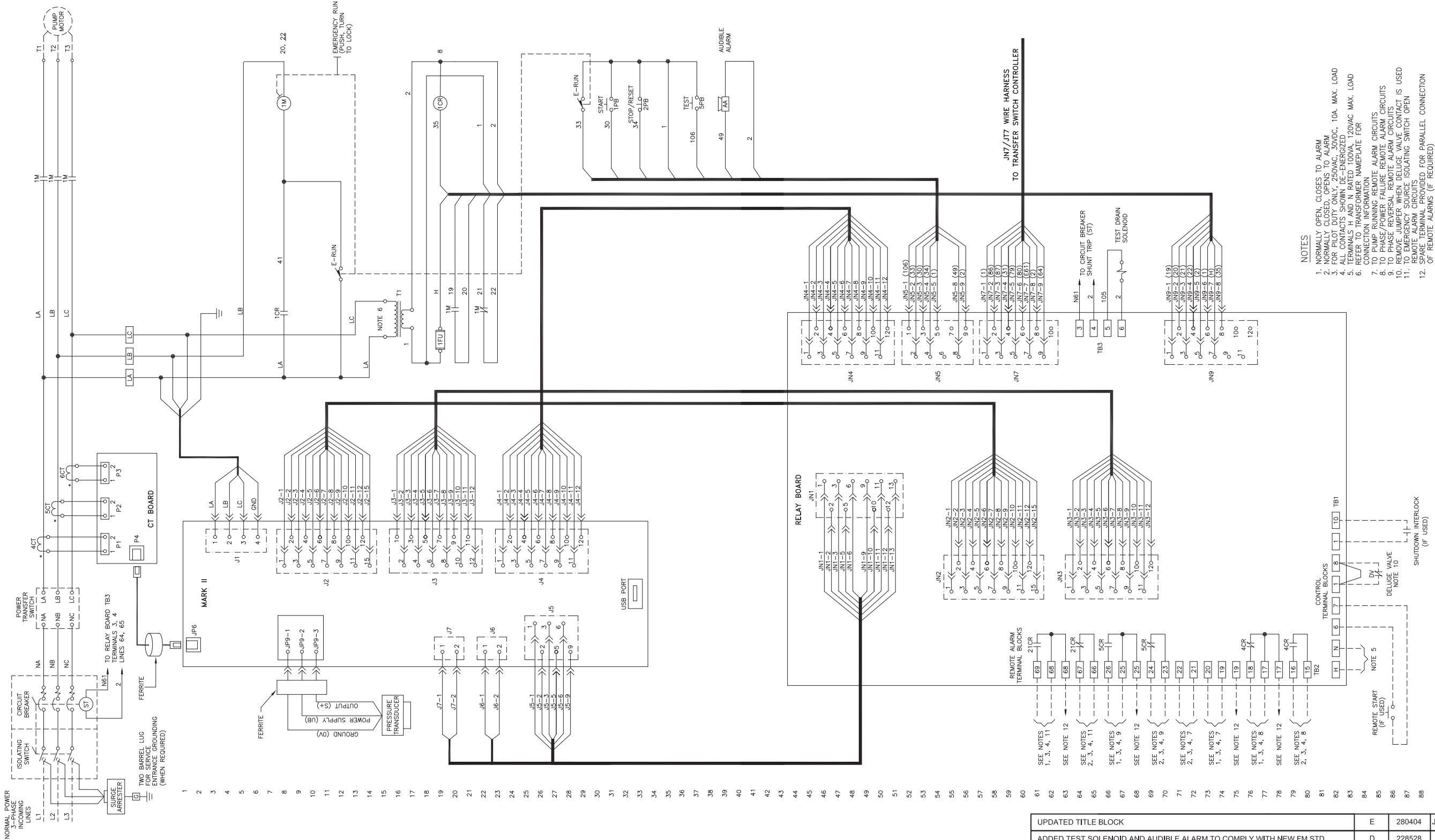
<div> THIRD ANGLE PROJECTION</div> <div><div>SIZE A</div><div>BY</div><div>DATE</div></div> <div><div>DRAWN BY</div><div>TEF</div><div>05-06-10</div></div> <div><div>FINAL APPROVAL</div><div>TEF</div><div>05-06-10</div></div>				<div> Firetrol, Inc.</div> <div>© Firetrol, Inc. Not for construction. Subject to change without notice.</div>		UPDATED TITLE BLOCK				D	281357	JMW	TEF	10-16-19
						REVISED LINE TERMINAL CHART, CHANGED TO XT4 BREAKERS				C	270091	TEF	TEF	11-29-17
						REVISION DESCRIPTION				REV	ECN NO	BY	APP	DATE
						FIELD CONNECTIONS		FTA950		DRAWING NUMBER FC950-55				
POWER TRANSFER SWITCH FOR GENERATOR OR SECOND UTILITY POWER SOURCE						DWG	REV	D	ECN NO	281357	SHEET 1 OF 1			

All rights reserved. The drawing and the information contained or depicted herein are the sole property of Firetrol, Inc. Copies are communicated to the recipient in strict confidence and may not be retransmitted, published, reproduced, copied or used in any manner, including as the basis for the manufacture or sale of any products, without the express prior written consent of Firetrol, Inc.



Mark IIx6 Electric Fire Pump Controllers

Wiring Schematic
FTA1000/950
Across The Line Starting
w/ Power Transfer Switch



	SIZE	B	BY	DATE
	DRAWN BY	TEF	05-10-02	
	FINAL APPROVAL	TEF	05-10-02	



© Firetrol, Inc. Not for construction.
Subject to change without notice.

UPDATED TITLE BLOCK		E	280404	JMW	TEF	08-26-19
ADDED TEST SOLENOID AND AUDIBLE ALARM TO COMPLY WITH NEW FM STD		D	228528	JC	TEF	08-31-10
REVISION DESCRIPTION		REV	ECN NO	BY	APP	DATE
WIRING SCHEMATIC		FTA1000 WITH FTA950		DRAWING NUMBER		
FULL VOLTAGE FIRE PUMP CONTROLLER WITH POWER TRANSFER SWITCH				WS1000-55		
DWG REV		E	ECN NO	280404	SHEET 1 OF 1	

All rights reserved. The drawing and the information contained or depicted herein are the sole property of Firetrol, Inc. Copies are communicated to the recipient in strict confidence and may not be retransmitted, published, reproduced, copied or used in any manner, including as the basis for the manufacture or sale of any products, without the express prior written consent of Firetrol, Inc.

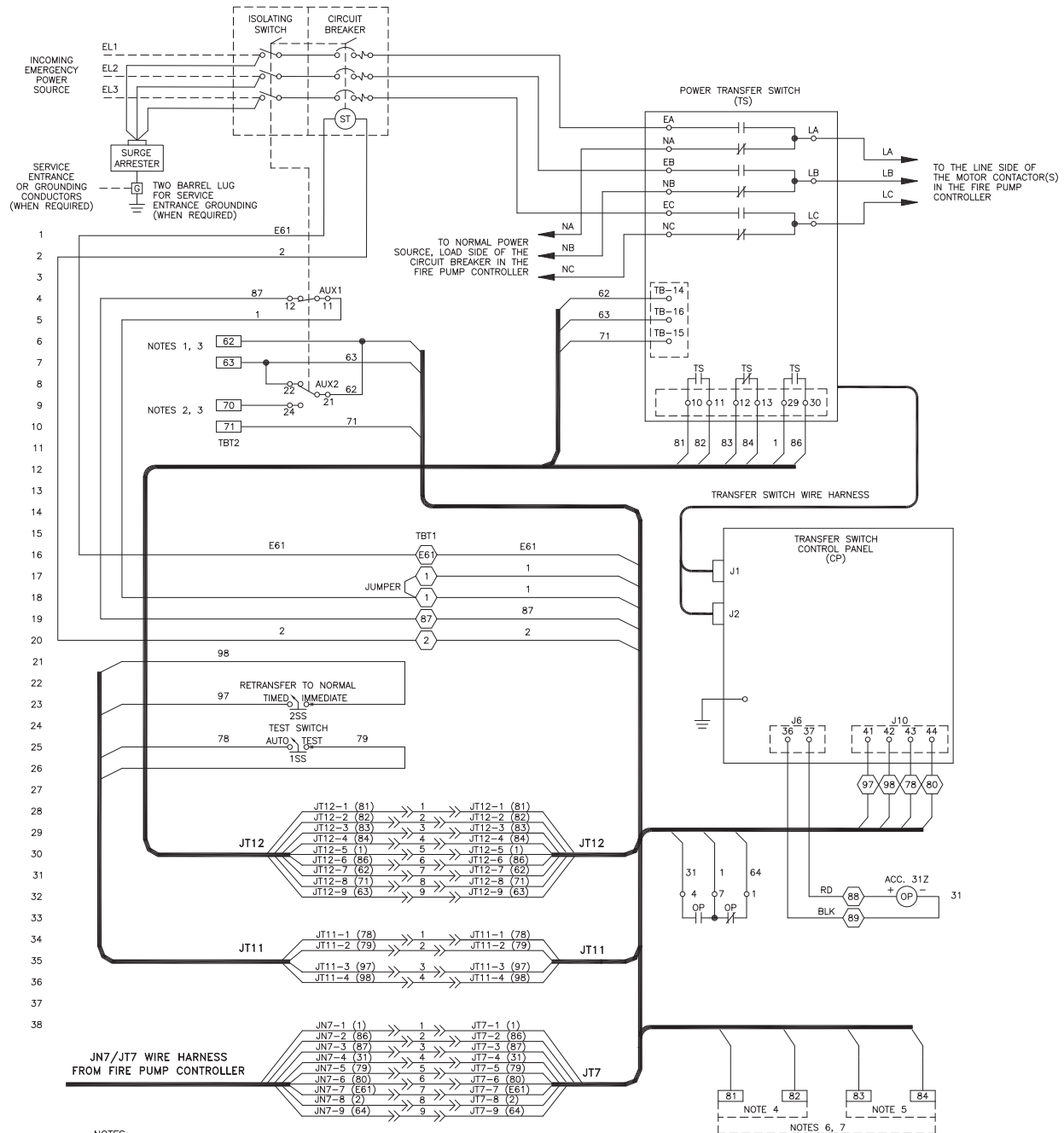


Power Transfer Switches

Wiring Schematic

FTA950

Assembled With Electric
Fire Pump Controllers



NOTES:

- 1 - NORMALLY CLOSED, OPENS TO START GENERATOR
- 2 - NORMALLY OPEN, CLOSSES TO START GENERATOR
- 3 - GEN-SET START CONTACTS RATED 1/2 AMP, 30 VDC
- 4 - NORMALLY OPEN, CLOSSES IN EMERGENCY
- 5 - NORMALLY CLOSED, OPENS IN EMERGENCY
- 6 - TRANSFER SWITCH POSITION REMOTE ALARM CONTACTS
- 7 - CONTACT RATING 5 AMP. MAX. 240 VAC, 28 VDC

COMPONENT LOCATION

- AUX1 - AUXILIARY SWITCH 1, CLOSSES WHEN EMERGENCY ISOLATING IS OPENED - LINE 4
AUX2 - AUXILIARY SWITCH 2, INHIBITS GEN-SET FROM STARTING IF EMERGENCY ISOLATING SWITCH IS OPENED - LINES 8, 9

- - FIELD CONNECTION TERMINAL BLOCK
⬡ - INTERCONNECTION TERMINAL BLOCK (FOR FACTORY USE ONLY)

SIZE	A	BY	DATE
DRAWN BY	TEF	05-25-10	
FINAL APPROVAL	TEF	05-25-10	



© Firetrol, Inc. Not for construction.
Subject to change without notice.

UPDATED TITLE BLOCK		B	281357	JMW	TEF	10-16-19
UPDATED TO COMPLY WITH NEW FM STANDARD		A	228528	JC	TEF	08-31-10
REVISION DESCRIPTION		REV	ECN NO	BY	APP	DATE
WIRING SCHEMATIC		FTA950		DRAWING NUMBER		
FIRE PUMP POWER TRANSFER SWITCH FOR GEN-SET AND SECOND UTILITY POWER SOURCE				WS950-55		
DWG REV		B	ECN NO	281357	SHEET 1 OF 1	

All rights reserved. The drawing and the information contained or depicted herein are the sole property of Firetrol, Inc. Copies are communicated to the recipient in strict confidence and may not be retransmitted, published, reproduced, copied or used in any manner, including as the basis for the manufacture or sale of any products, without the express prior written consent of Firetrol, Inc.