

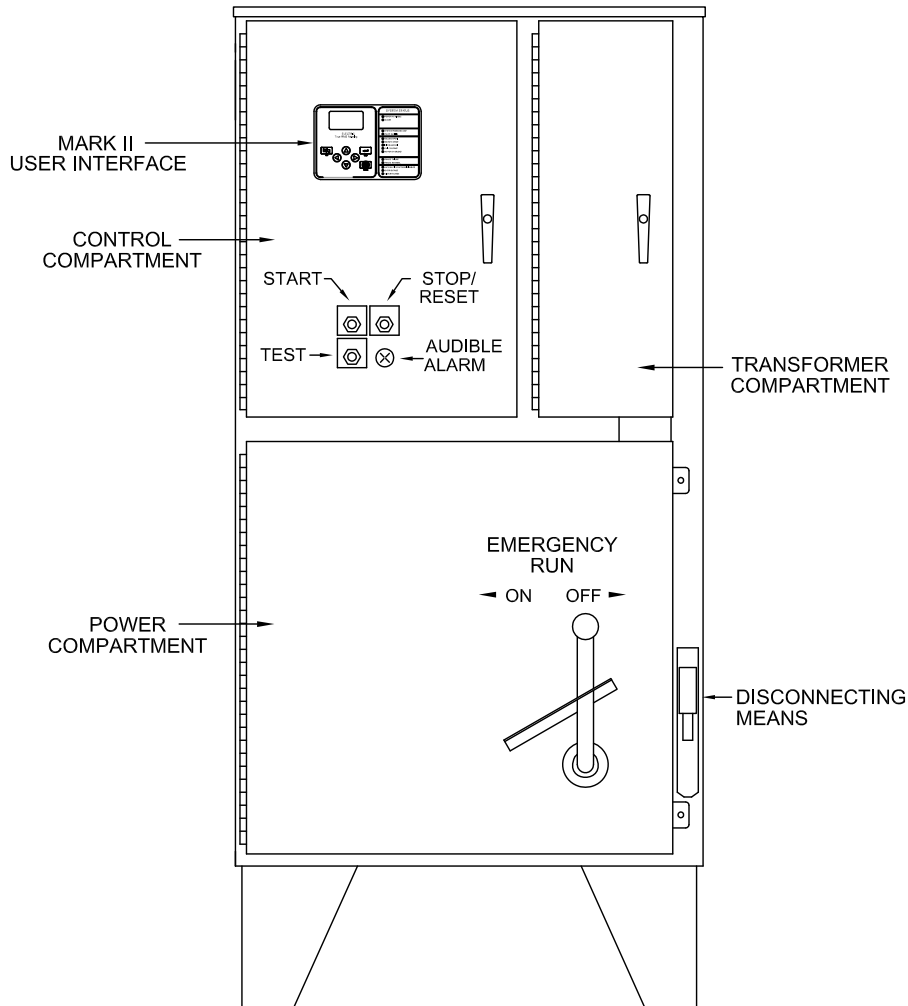


Mark IIx6 Electric Fire Pump Controller

Standard Drawing Package

FTA2000

Medium Voltage Across The Line Starting



(DRAWINGS INCLUDED IN THIS PACKAGE ARE FOR STANDARD CONTROLLERS. ACTUAL "AS BUILT" DRAWINGS MAY DIFFER FROM THOSE SEEN HERE).

Firetrol, Inc.

3412 Apex Peakway
Apex, North Carolina 27502
P 919 460-5200
F 919 460 5250
www.firetrol.com

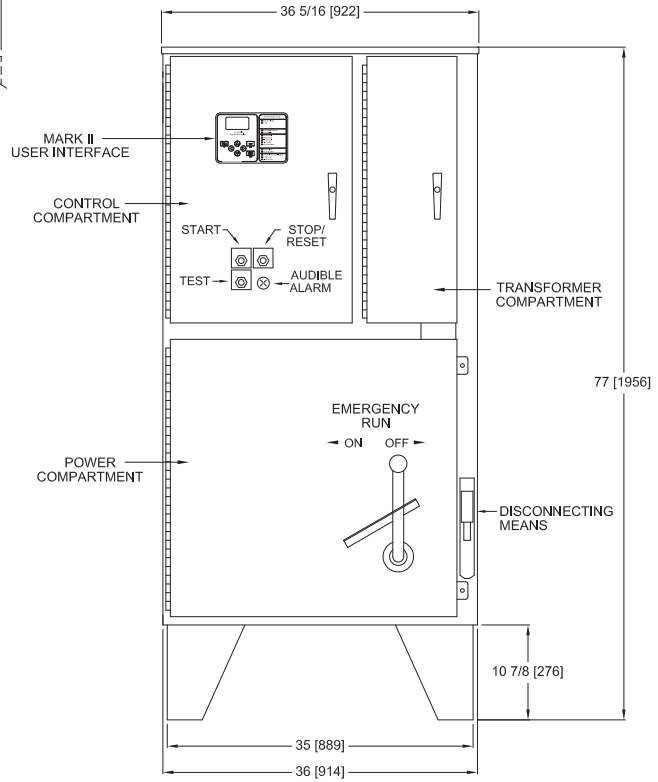
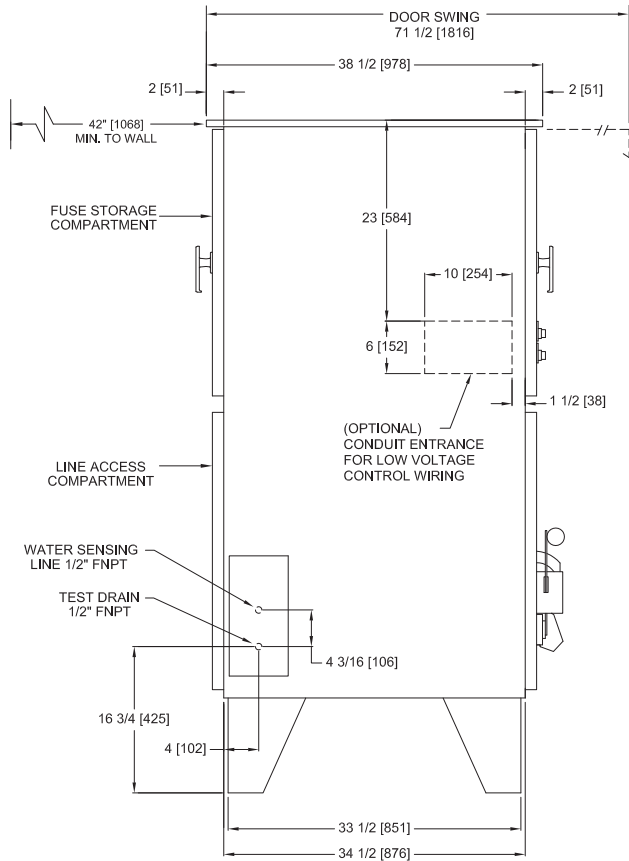
While every precaution has been taken to ensure accuracy and completeness herein, Firetrol, Inc. assumes no responsibility, and disclaims all liability, for damages resulting from use of this information or for any errors or omissions. Specifications and drawings are subject to change without notice. ©2019 Firetrol, Inc., All Rights Reserved.

Publication IM2000 Rev. J



Mark IIx6 Electric Fire Pump Controllers

Dimensions and Shipping Weight FTA2000 Medium Voltage Across The Line Starting



DO NOT INSTALL IN AMBIENT TEMPERATURES BELOW 41°F [5°C]

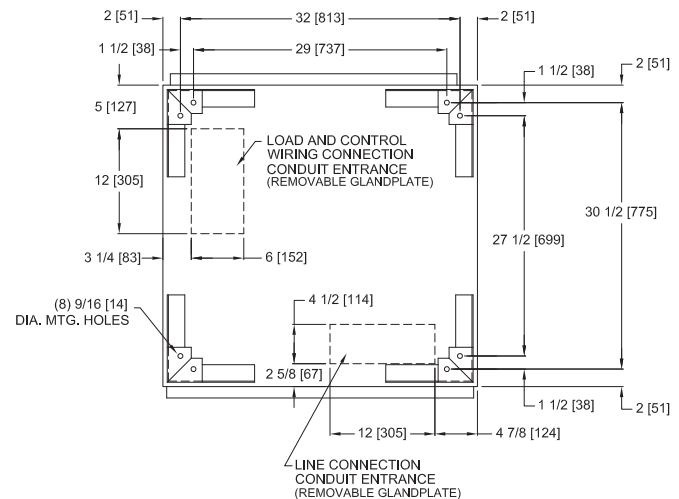
DIMENSIONS SHOWN ON THIS DRAWING ARE APPLICABLE FOR NEMA TYPES 2/3R/4/4X/12

ALL DIMENSIONS - INCHES [MM]
SHIPPING WEIGHT - POUNDS [KG]

APPROXIMATE SHIPPING WEIGHT
1000 [453]

CAUTION

CONTROLLER TEST DRAIN MUST BE PIPED TO A WASTE DRAIN. FAILURE TO CONNECT THE TEST DRAIN TO A FLOOR DRAIN WILL RESULT IN UNSAFE CONDITIONS OF WATER UNDER AND AROUND THE CONTROLLER.



THIRD ANGLE PROJECTION	SIZE	A	BY	DATE
	DRAWN BY	TEF	05-07-03	
	FINAL APPROVAL	TEF	05-07-03	



© Firetrol, Inc. Not for construction. Subject to change without notice.

UPDATED TITLE BLOCK		D	281356	JMW	TEF	10-14-19
REVISED WATER SENSING AND TEST DRAIN NOTES		C	249452	JMW	TEF	07-10-14
REVISION DESCRIPTION		REV	ECN NO	BY	APP	DATE
DIMENSIONS AND SHIPPING WEIGHT		FTA2000		DRAWING NUMBER		
5/7.2KV CLASS ELECTRIC FIRE PUMP CONTROLLER				DD2000-20		
DWG REV	D	ECN NO	281356	SHEET 1 OF 1		

All rights reserved. The drawing and the information contained or depicted herein are the sole property of Firetrol, Inc. Copies are communicated to the recipient in strict confidence and may not be retransmitted, published, reproduced, copied or used in any manner, including as the basis for the manufacture or sale of any products, without the express prior written consent of Firetrol, Inc.

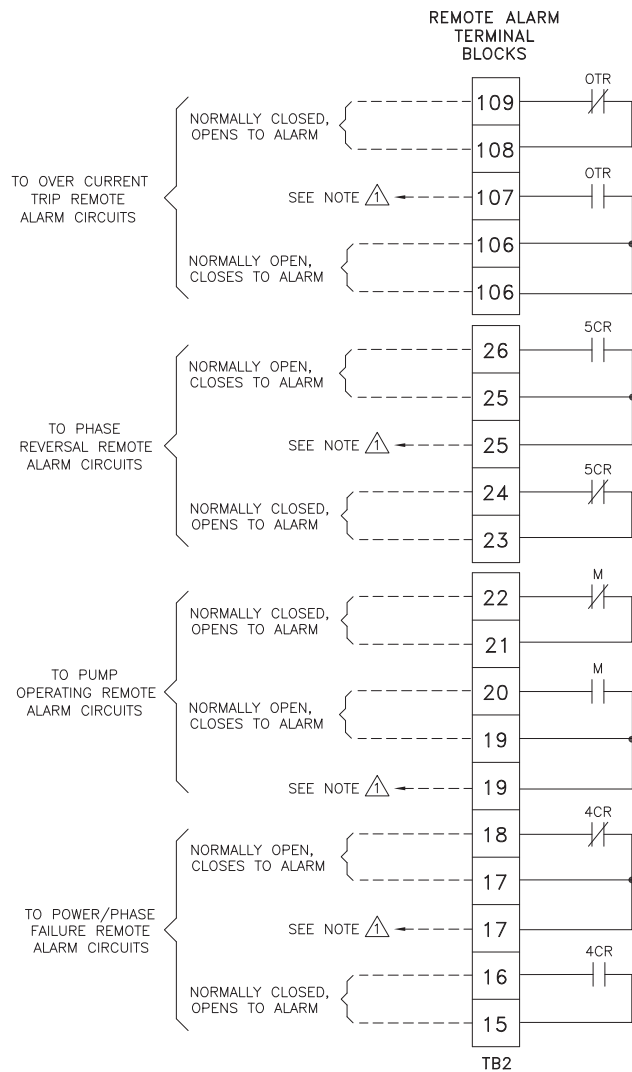


Mark IIx6 Electric Fire Pump Controllers

Field Connections

FTA2000

Medium Voltage Across The Line Starting



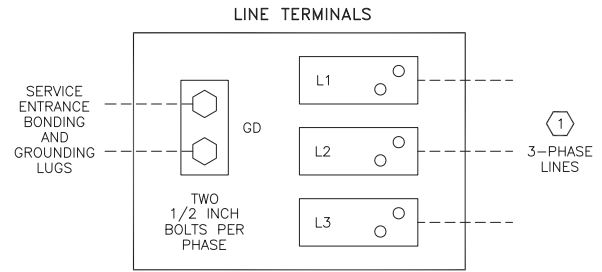
\triangle SPARE TERMINALS PROVIDED FOR PARALLEL CONNECTION OF REMOTE ALARMS (IF REQUIRED)

NOTE: TERMINALS FOR CUSTOMER CONNECTIONS REQUIRE 3.5MM SLOTTED SCREW DRIVER

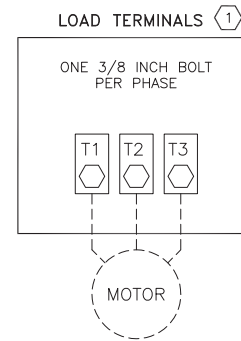
TERMINAL TIGHTENING TORQUE		
TERMINAL TYPE	WIRE SIZE	TIGHTENING TORQUE
CONTROL AND ALARM TERMINALS	#14-12 AWG [2.5-4 MM ²]	5.6 lb-in [0.6 Nm]

-USE COPPER CONDUCTORS ONLY-

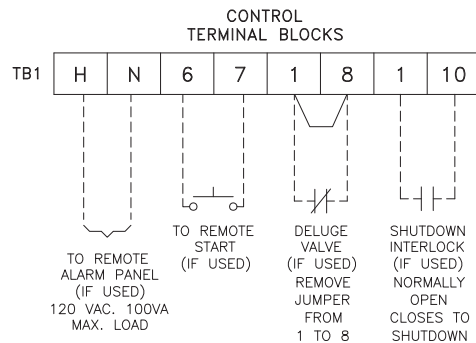
-NOTE-
ALARM CONTACT RATING PILOT DUTY
250 VAC, 30 VDC
10 A. MAX. LOAD



$\textcircled{1}$ FOR PROPER WIRE SIZING, REFER TO THE NATIONAL ELECTRICAL CODE, NFPA 70.
-USE COPPER CONDUCTORS ONLY-



- NOTES**
- 1- Incoming line terminals are provided to accommodate wire sizes at 125% of motor full load current per NFPA 70-2008, *National Electrical Code*, Table 430-250, Section 695.6(c), and Table 310-73, 75° rated Copper conductors.
 - 2- Controller is phase rotation sensitive. Incoming lines L1, L2 and L3 must be in ABC, left hand rotation sequence for proper operation of the phase monitor.
 - 3- Motor connections shown are typical. Since motor connections vary widely, refer to the motor connection diagram for specific wiring arrangement.



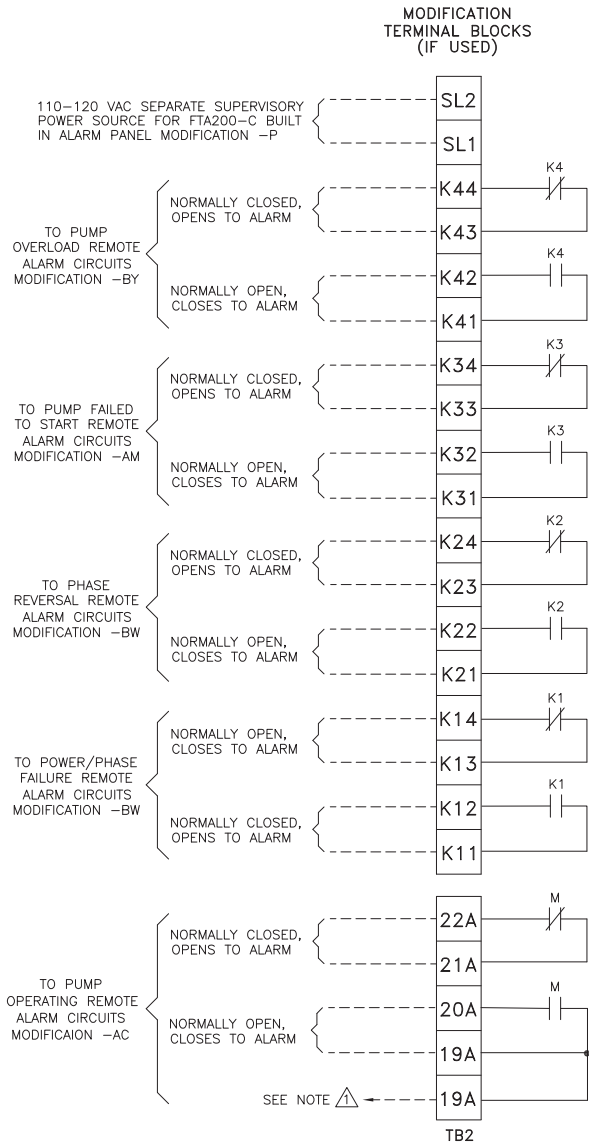
PRESSURE SYSTEM CONNECTION
1/2" FNPT

THIRD ANGLE PROJECTION	SIZE	A	BY	DATE
	DRAWN BY	TEF	05-07-03	
	FINAL APPROVAL	TEF	05-07-03	



© Firetrol, Inc. Not for construction. Subject to change without notice.

REVISED TITLE BLOCK, ADDED NOTE FOR COPPER CONDUCTORE ONLY		A	226169	TEF	TEF	02-09-10
REVISION DESCRIPTION		REV	ECN NO	BY	APP	DATE
FIELD CONNECTIONS		FTA2000		DRAWING NUMBER		
MEDIUM VOLTAGE ELECTRIC FIRE PUMP CONTROLLER 5/7.2KV CLASS		FC2000-20				
DWG REV	B	ECN NO	281356	SHEET 1 OF 2		



SPARE TERMINALS PROVIDED FOR PARALLEL CONNECTION OF REMOTE ALARMS (IF REQUIRED)

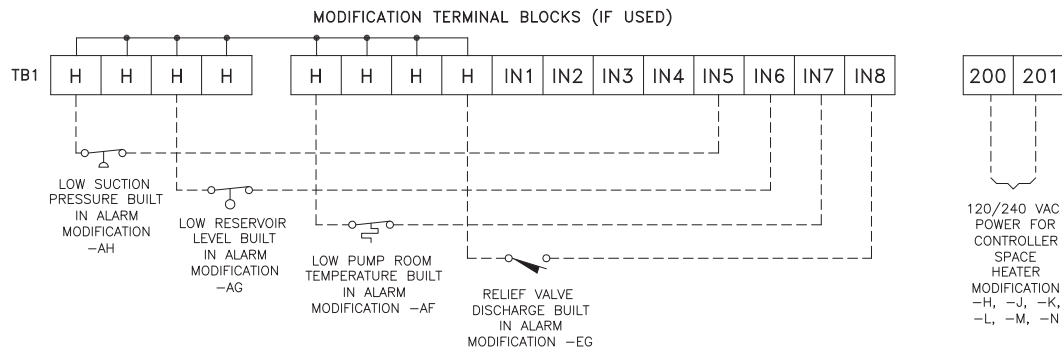
NOTE: TERMINALS FOR CUSTOMER CONNECTIONS REQUIRE 3.5MM SLOTTED SCREW DRIVER

TERMINAL TIGHTENING TORQUE		
TERMINAL TYPE	WIRE SIZE	TIGHTENING TORQUE
CONTROL AND ALARM TERMINALS	#14-12 AWG [2.5-4 MM ²]	5.6 lb-in [0.6 Nm]

-USE COPPER CONDUCTORS ONLY-

-NOTE-
ALARM CONTACT RATING PILOT DUTY 250 VAC, 30 VDC 10 A. MAX. LOAD

NOTE:
TERMINAL NUMBERS SUBJECT TO CHANGE WITHOUT NOTICE FOR REFERENCE ONLY. REQUEST CONSTRUCTION DRAWINGS FROM FIRETROL OR YOUR LOCAL FIRETROL REPRESENTATIVE.



	SIZE A	BY	DATE
	DRAWN BY	TEF	05-07-03
	FINAL APPROVAL		

Firetrol, Inc.
© Firetrol, Inc. Not for construction. Subject to change without notice.

UPDATED TITLE BLOCK		B	281356	JMW	TEF	10-14-19
REVISED TITLE BLOCK, ADDED NOTE FOR COPPER CONDUCTORS ONLY		A	226169	TEF	TEF	02-09-10
REVISION DESCRIPTION		REV	ECN NO	BY	APP	DATE
FIELD CONNECTIONS		FTA2000		DRAWING NUMBER		
MEDIUM VOLTAGE ELECTRIC FIRE PUMP CONTROLLER 5/7.2KV CLASS		FC2000-20				
DWG REV	B	ECN NO	281356	SHEET 2 OF 2		

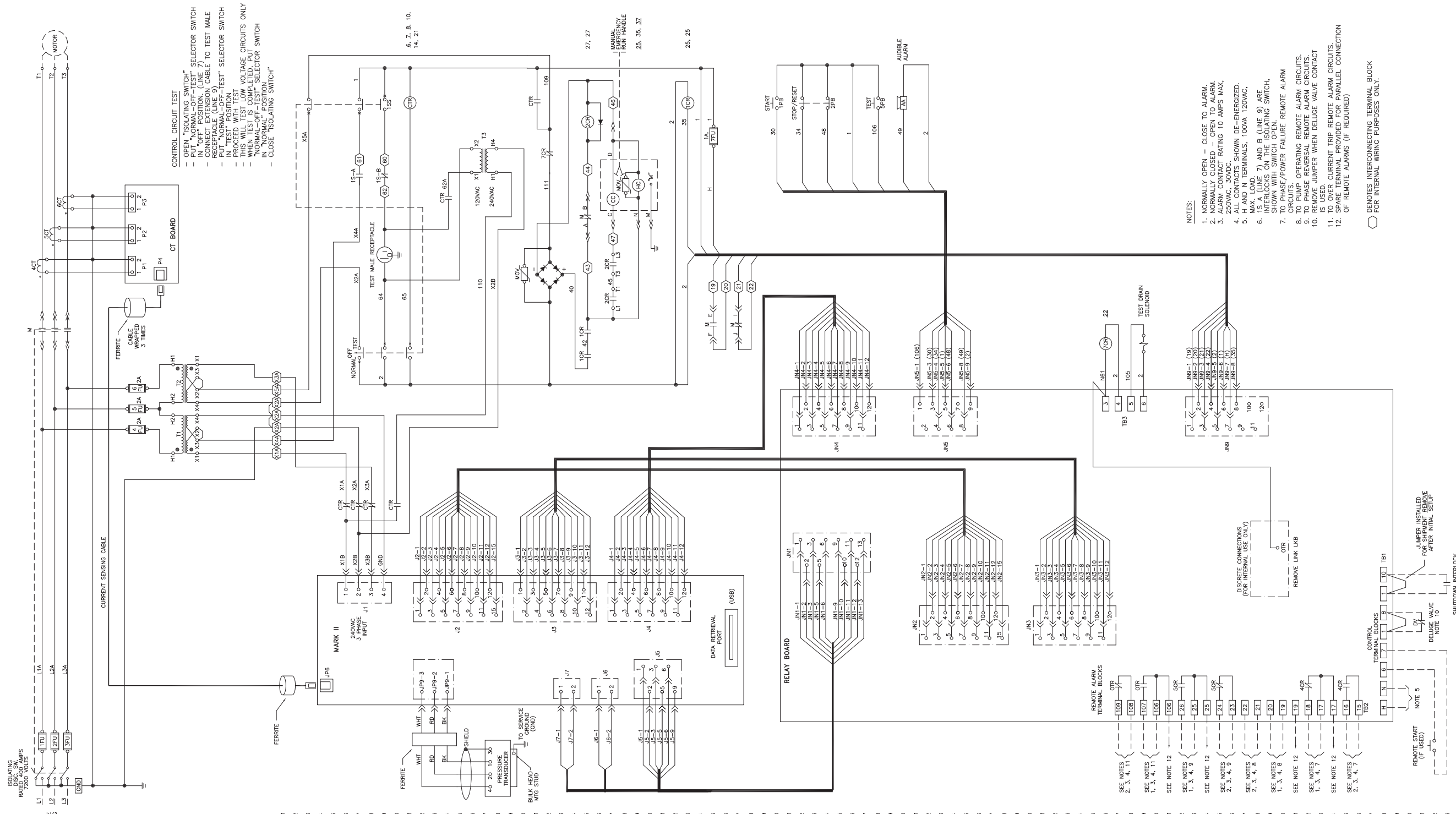
All rights reserved. The drawing and the information contained or depicted herein are the sole property of Firetrol, Inc. Copies are communicated to the recipient in strict confidence and may not be retransmitted, published, reproduced, copied or used in any manner, including as the basis for the manufacture or sale of any products, without the express prior written consent of Firetrol, Inc.



Mark IIx6 Electric Fire Pump Controllers

Wiring Schematic
FTA2000

Medium Voltage Across The Line Starting



- CONTROL CIRCUIT TEST
- OPEN "ISOLATING SWITCH" SELECTOR SWITCH
 - PUT "NORMAL-OFF-TEST" SELECTOR SWITCH TO TEST MALE RECEPTACLE (LINE 9)
 - CONNECT EXTENSION CABLE TO TEST MALE RECEPTACLE (LINE 9)
 - PUT "NORMAL-OFF-TEST" SELECTOR SWITCH TO TEST MALE RECEPTACLE
 - PROCEED WITH TEST
 - THIS WILL TEST LOW VOLTAGE CIRCUITS ONLY
 - WHEN TEST IS COMPLETED, PUT "NORMAL-OFF-TEST" SELECTOR SWITCH IN "NORMAL" POSITION
 - CLOSE "ISOLATING SWITCH"

- NOTES:
1. NORMALLY OPEN - CLOSE TO ALARM.
 2. NORMALLY CLOSED - OPEN TO ALARM.
 3. ALARM CONTACT RATING 10 AMP'S MAX.
 4. ALARM CONTACT RATING 100VA 120VAC.
 5. H AND N TERMINALS, 100VA 120VAC, MAX. LOAD.
 6. 15 A (LINE 7) AND B (LINE 9) ARE INTERLOCKS ON THE ISOLATING SWITCH.
 7. TO PHASE/POWER FAILURE REMOTE ALARM CIRCUITS.
 8. TO PUMP OPERATING REMOTE ALARM CIRCUITS.
 9. TO PHASE REVERSAL REMOTE ALARM CIRCUITS.
 10. REMOVE JUMPER WHEN DELUGE VALVE CONTACT IS USED.
 11. CURRENT TRIP REMOTE ALARM CIRCUITS.
 12. SPARE TERMINAL PROVIDED FOR PARALLEL CONNECTION OF REMOTE ALARMS (IF REQUIRED)

○ DENOTES INTERCONNECTING TERMINAL BLOCK FOR INTERNAL WIRING PURPOSES ONLY.

<p>THIRD ANGLE PROJECTION</p>	SIZE	B	BY	DATE	UPDATED TITLE BLOCK		D	281356	JMW	TEF	10-14-19
	DRAWN BY	TEF	05-06-03	ADDED AUDIBLE ALARM, TEST PUSHBUTTON, AND TEST DRAIN SOLENOID		C	229903	GFD	TEF	12-03-10	
FINAL APPROVAL	TEF	05-06-03	REVISION DESCRIPTION		REV	ECN NO	BY	APP	DATE	DRAWING NUMBER	
			WIRING SCHEMATIC		FTA2000		WS2000-20		DWG NO 281356 SHEET 1 OF 1		
			5/7.2KV CLASS ELECTRIC FIRE PUMP CONTROLLER								

All rights reserved. This drawing and the information contained or depicted herein are the sole property of Firetrol, Inc. Copies are communicated to the recipient in strict confidence and may not be retransmitted, published, reproduced, copied or used in any manner, including as the basis for the manufacture or sale of any products, without the express prior written consent of Firetrol, Inc.