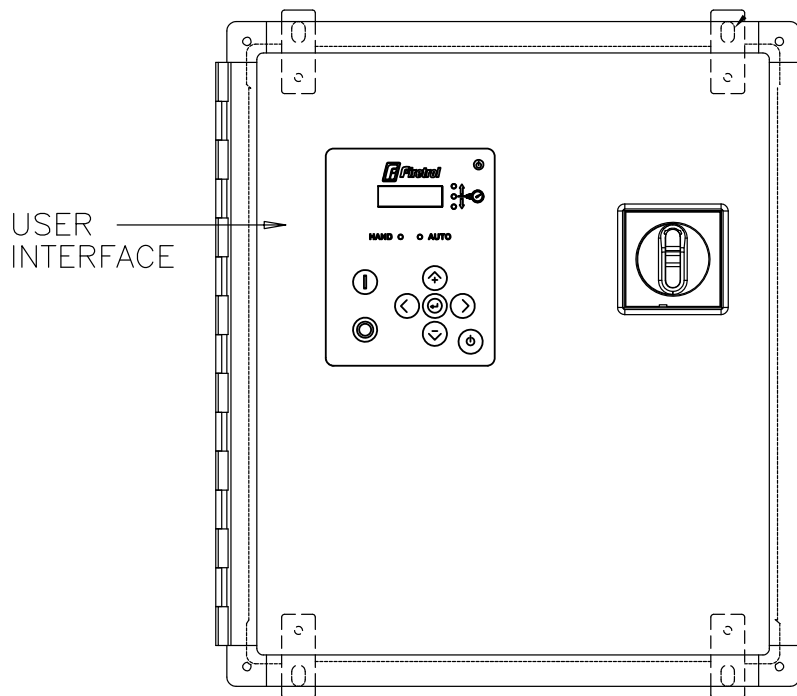


Limited Option Jockey Pump Controllers



(DRAWINGS INCLUDED IN THIS PACKAGE ARE FOR STANDARD CONTROLLERS. ACTUAL "AS BUILT" DRAWINGS MAY DIFFER FROM THOSE SEEN HERE).

Firetrol, Inc.

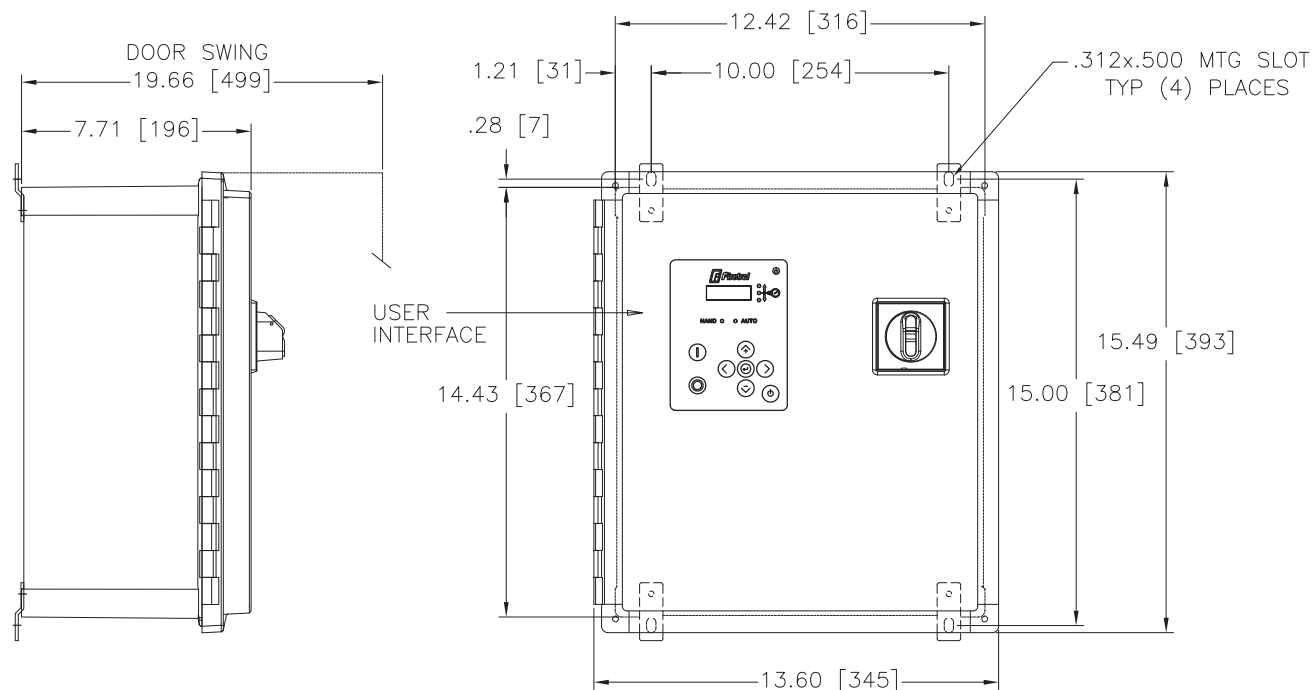
3412 Apex Peakway
Apex, North Carolina 27502
P 919 460 5200
F 919 460 5250
www.firetrol.com

While every precaution has been taken to ensure accuracy and completeness herein, Firetrol, Inc. assumes no responsibility, and disclaims all liability, for damages resulting from use of this information or for any errors or omissions. Specifications and drawings are subject to change without notice. ©2021 Firetrol, Inc., All Rights Reserved.



FTA560F

Limited Option Jockey Pump Controllers



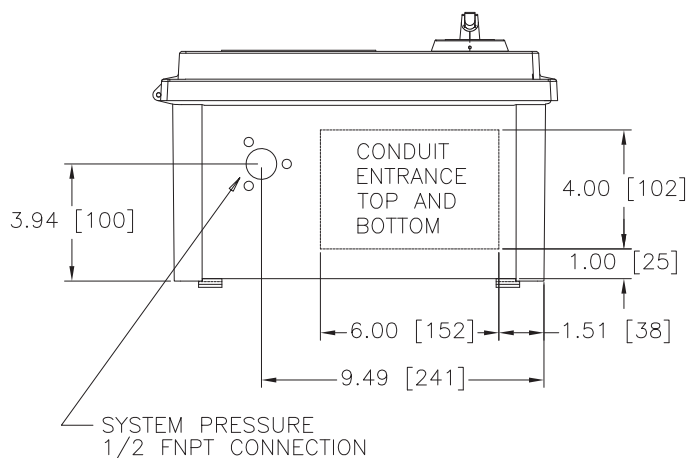
NOTE

CONDUIT ENTRANCE TOP AND
BOTTOM ONLY DO NOT ENTER
FROM SIDES.
USE WATERTIGHT CONDUIT AND
CONNECTOR ONLY.

CAUTION

BONDING BETWEEN CONDUIT CONNECTIONS IS NOT AUTOMATIC AND MUST BE PROVIDED AS PART OF THE INSTALLATION.



DIMENSIONS SHOWN ON THIS
DRAWING ARE APPLICABLE FOR
NEMA TYPES 2/3R/4/4X/12



SHIPPING WEIGHT
APPROX. 15 [6.8]

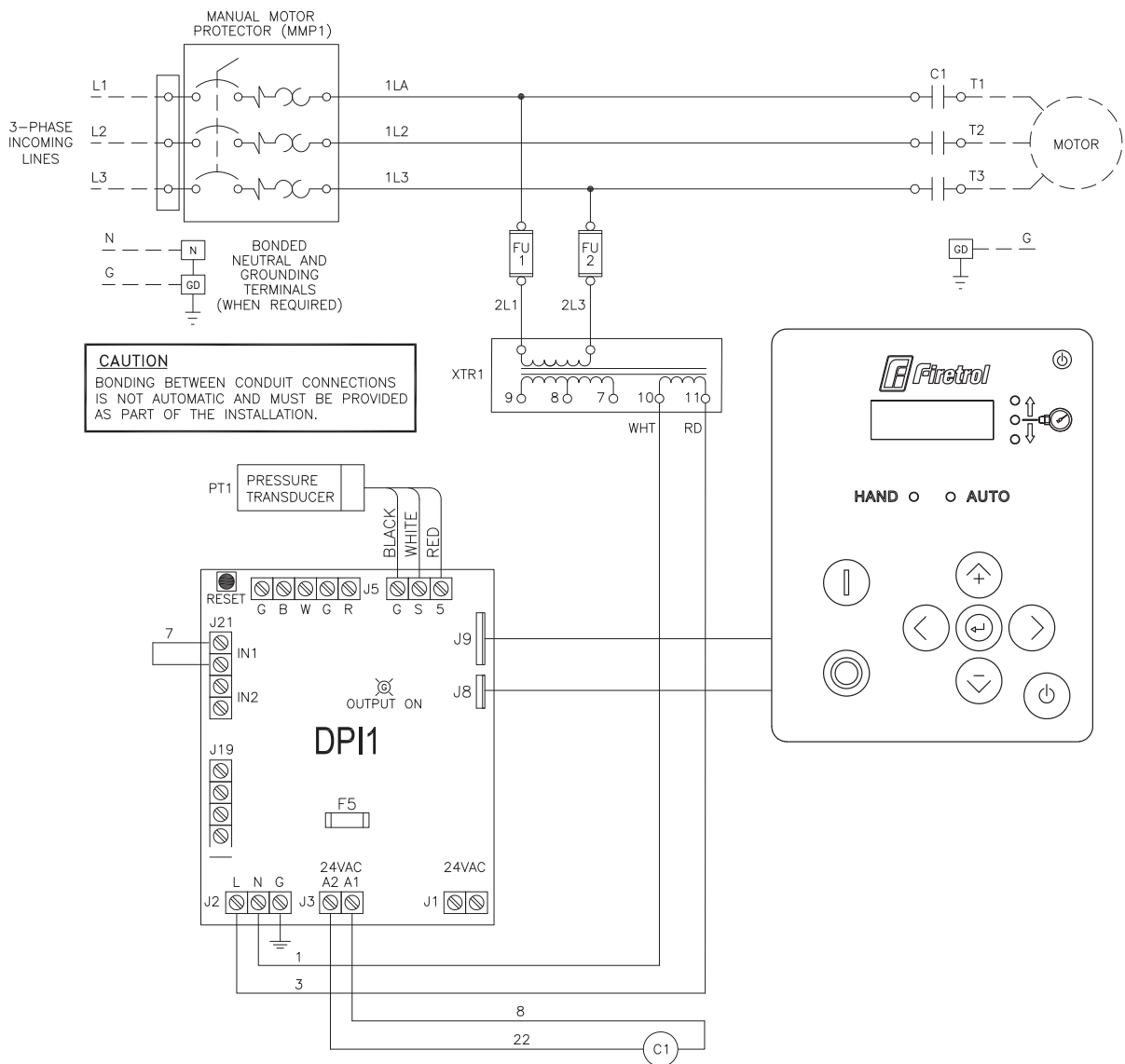
ALL DIMENSIONS – INCHES [MM]
SHIPPING WEIGHT – POUNDS [KG]

MAXIMUM MOTOR HORSEPOWER				
200-208V	220-240V	380-415V	440-480V	550-600V
7 1/2	10	15	20	20

 THIRD ANGLE PROJECTION	SIZE A	BY	DATE	 Firetrol, Inc. © Firetrol, Inc. Not for construction. Subject to change without notice.	REVISION DESCRIPTION		REV	ECN NO	BY	APP	DATE	
	DRAWN BY	TEF	10/26/21		DIMENSIONS AND SHIPPING WEIGHT		FTA560F		DRAWING NUMBER			
	FINAL APPROVAL	TEF	10/26/21		FTA560F JOCKEY PUMP CONTROLLER				DD560-01			
							DWG REV	ECN NO	SHEET 1 OF 1			

AT robots reserved. The drawings and the information contained or depicted herein are the sole property of Fretrol, Inc. Copies are communicated to the recipient in strict confidence and may not be retransmitted, published, reproduced, copied or used in any manner, including as the basis for the manufacture or sale of any products, without the express prior written consent of Fretrol, Inc.

Limited Option Jockey Pump Controllers with MMP



NEUTRAL AND
GROUND TERMINALS
WIRE CAPACITY (CU)

#12 AWG-#2 AWG
4 MM² -35 MM²

PRESSURE SYSTEM
CONNECTION
1/2" FNPT

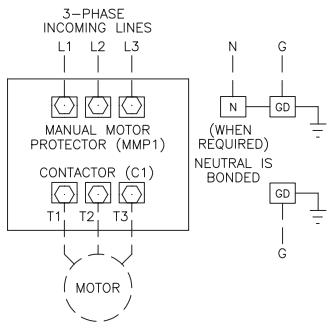
LINE TERMINALS-WIRE CAPACITY (CU)

MAXIMUM MOTOR HORSEPOWER					WIRE SIZE COPPER ONLY
200-208V	220-240V	380-415V	440-480V	550-600V	
7 1/2	10	15	20	20	#10 AWG-#8 AWG 6 MM ² -10 MM ²

MOTOR TERMINALS-WIRE CAPACITY (CU)

MAXIMUM MOTOR HORSEPOWER					WIRE SIZE COPPER ONLY
200-208V	220-240V	380-415V	440-480V	550-600V	
7 1/2	10	15	20	20	#14 AWG-#8 AWG 2.5 MM ² -10 MM ²

FOR CORRECT WIRE SIZING, REFER TO
NATIONAL ELECTRICAL CODE, NFPA 70.



DRAWING FOR INFORMATION ONLY.
MANUFACTURER RESERVES THE RIGHT TO MODIFY THIS DRAWING WITHOUT NOTICE.
CONTACT MANUFACTURER FOR AS BUILT DRAWING.

THIRD ANGLE PROJECTION	SIZE	A	BY	DATE	REVISION DESCRIPTION	REV	ECN NO	BY	APP	DATE
	DRAWN BY	TEF	10/25/21		WIRING SCHEMATIC					
	FINAL APPROVAL	TEF	10/25/21		FTA560F JOCKEY PUMP CONTROLLER					
 © Firetrol, Inc. Not for construction. Subject to change without notice.					DRAWING NUMBER		WS560-01			
					DWG REV		ECN NO		SHEET 1 OF 1	

All rights reserved. The drawing and the information contained or depicted herein are the sole property of Firetrol, Inc. Copies are communicated to the recipient in strict confidence and may not be retransmitted, published, reproduced, copied or used in any manner, including as the basis for the manufacture or sale of any products, without the express prior written consent of Firetrol, Inc.

Wiring Schematic

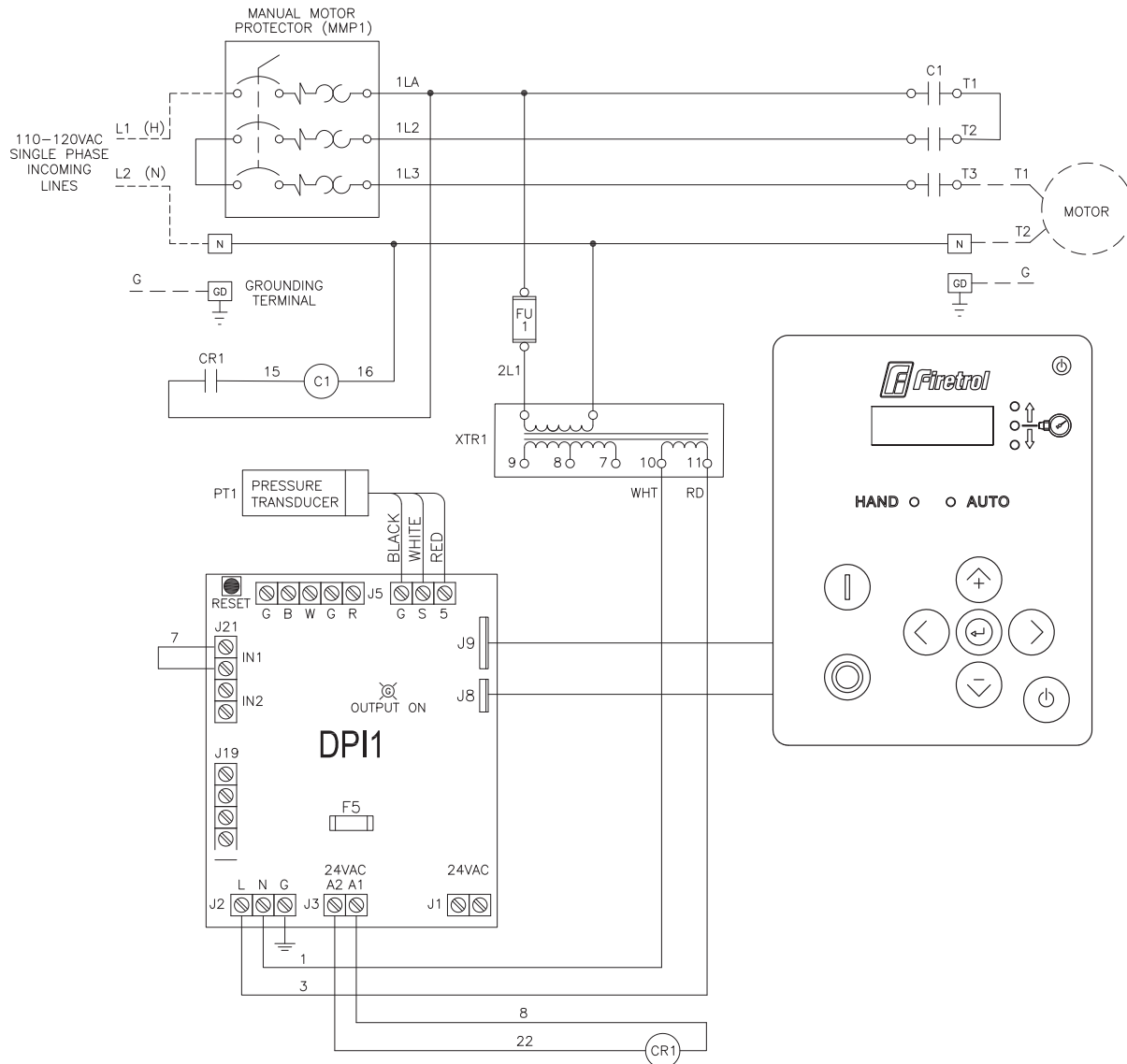
Single Phase

(110-120 VAC)



FTA560F

Limited Option Jockey Pump Controllers with MMP



CAUTION

BONDING BETWEEN CONDUIT CONNECTIONS IS NOT AUTOMATIC AND MUST BE PROVIDED AS PART OF THE INSTALLATION.

GROUND TERMINALS WIRE CAPACITY (CU)

#12 AWG-#2 AWG
4 MM² -35 MM²

PRESSURE SYSTEM
CONNECTION
1/2" FNPT

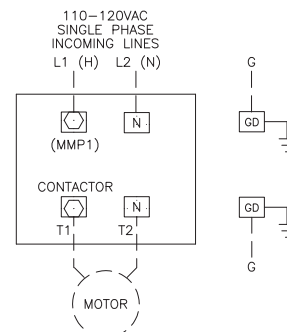
LINE TERMINALS-WIRE CAPACITY (CU)

MOTOR HORSEPOWER	WIRE SIZE COPPER ONLY
110-120V	
2	#14 AWG-#8 AWG 2.5 MM ² -10 MM ²

MOTOR TERMINALS-WIRE CAPACITY (CU)

MOTOR HORSEPOWER	WIRE SIZE COPPER ONLY
110-120V	
2	#14 AWG-#8 AWG 2.5 MM ² -10 MM ²

FOR CORRECT WIRE SIZING, REFER TO
NATIONAL ELECTRICAL CODE, NFPA 70.



DRAWING FOR INFORMATION ONLY.
MANUFACTURER RESERVES THE RIGHT TO MODIFY THIS DRAWING WITHOUT NOTICE.
CONTACT MANUFACTURER FOR AS BUILT DRAWING.

SIZE	A	BY	DATE
DRAWN BY	TEF	10/25/21	
FINAL APPROVAL	TEF	10/25/21	



© Firetrol, Inc. Not for construction.
Subject to change without notice.

REVISED TRANSFORMER CONNECTION		A	-	TEF	TEF	02/17/22
REVISION DESCRIPTION		REV	ECN NO	BY	APP	DATE
WIRING SCHEMATIC						
FTA560F						
FTA560F 110-120VAC SINGLE PHASE JOCKEY PUMP CONTROLLER						
DRAWING NUMBER		WS560-12				
DWG REV		A	ECN NO	-	SHEET 1 OF 1	

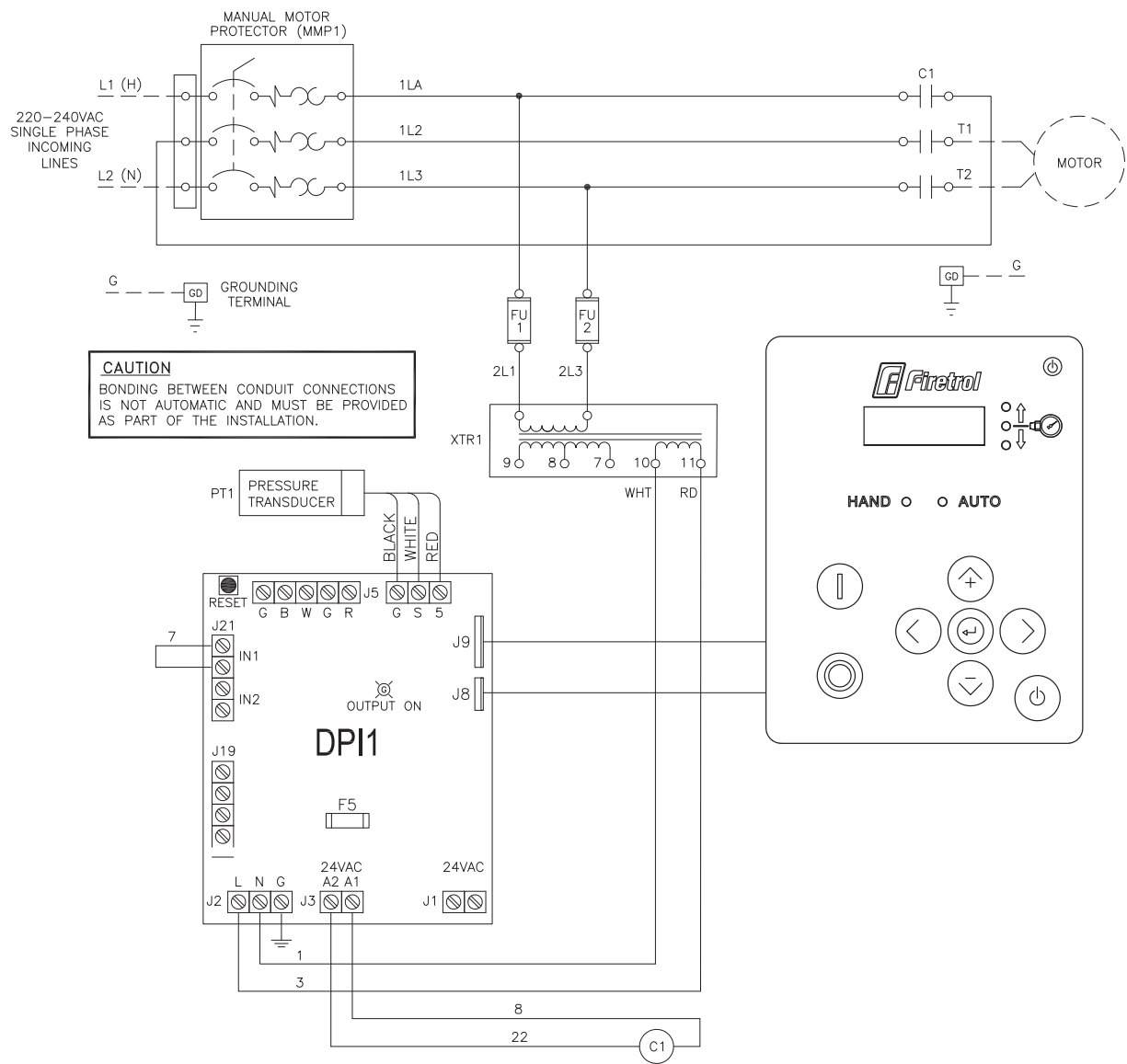
All rights reserved. The drawing and the information contained or depicted herein are the sole property of Firetrol, Inc. Copies are communicated to the recipient in strict confidence and may not be retransmitted, published, reproduced, copied or used in any manner, including as the basis for the manufacture or sale of any products, without the express prior written consent of Firetrol, Inc.

Wiring Schematic
Single Phase
(220-240VAC)



FTA560F

Limited Option Jockey Pump Controllers with MMP



NEUTRAL AND
GROUND TERMINALS
WIRE CAPACITY (CU)

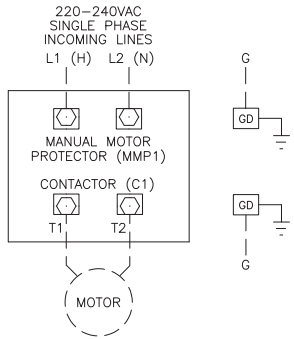
#12 AWG-#2 AWG
4 MM ² -35 MM ²

PRESSURE SYSTEM
CONNECTION
1/2" FNPT



LINE TERMINALS-WIRE CAPACITY (CU)	
MOTOR HORSEPOWER	WIRE SIZE COPPER ONLY
220-240V	
5	#10 AWG-#8 AWG 6 MM ² -10 MM ²

MOTOR TERMINALS-WIRE CAPACITY (CU)	
MOTOR HORSEPOWER	WIRE SIZE COPPER ONLY
220-240V	
5	#14 AWG-#8 AWG 2.5 MM ² -10 MM ²

1 FOR CORRECT WIRE SIZING, REFER TO
NATIONAL ELECTRICAL CODE, NFPA 70.



DRAWING FOR INFORMATION ONLY.
MANUFACTURER RESERVES THE RIGHT TO MODIFY THIS DRAWING WITHOUT NOTICE.
CONTACT MANUFACTURER FOR AS BUILT DRAWING.

 THIRD ANGLE PROJECTION	SIZE A	BY	DATE	 © Firetrol, Inc. Not for construction. Subject to change without notice.	REVISION DESCRIPTION			REV	ECN NO	BY	APP	DATE		
	DRAWN BY	TEF	10/25/21		WIRING SCHEMATIC		FTA560F	DRAWING NUMBER WS560-13						
	FINAL APPROVAL	TEF	10/25/21		FTA560F 220-240VAC SINGLE PHASE JOCKEY PUMP CONTROLLER						DWG REV	ECN NO	SHEET 1 OF 1	

All rights reserved. The drawings and the information contained or denoted herein are the sole property of Blatled, Inc. Copies are communicated to the recipient to strict compliance and may not be retransmitted, published, reproduced, copied or used in any manner. Indulging as the basis for the manufacture or sale of any products, without the express prior written consent of Blatled, Inc.

All rights reserved. The drawing and the information contained or depicted herein are the sole property of Firetrol, Inc. Copies are communicated to the recipient in strict confidence and may not be retransmitted, published, reproduced, copied or used in any manner, including as the basis for the manufacture or sale of any products, without the express prior written consent of Firetrol, Inc.