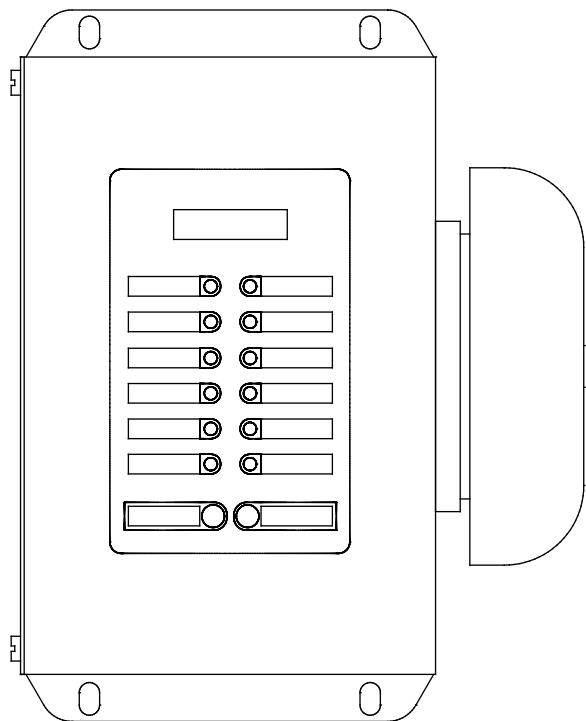


Remote Alarm Panels For Use With 1-Electric and 1-Diesel Engine Fire Pump Controller

Project Information



(DRAWINGS INCLUDED IN THIS PACKAGE ARE FOR STANDARD CONTROLLERS. ACTUAL "AS BUILT" DRAWINGS MAY DIFFER FROM THOSE SEEN HERE).

Firetrol™

3362 Apex Peakway
Apex, North Carolina 27502
P 919 460 5200
F 919 460 5250
www.firetrol.com

While every precaution has been taken to ensure accuracy and completeness herein, Firetrol assumes no responsibility, and disclaims all liability, for damages resulting from use of this information or for any errors or omissions. Specifications and drawings are subject to change without notice. ©2025 Firetrol, All Rights Reserved.

Firetrol Remote Alarm Panels for Use With Diesel Engine and Electric Fire Pump Controllers

FTA200-A, 200-AA, 200-F, 200-FF & 200-AF
Specifications

1.0 Alarm Panel

The main fire pump controller shall be a factory assembled, wired and tested unit.

1.1 Standards, Listings & Approvals

The controller shall conform to all the requirements of the latest editions of:
NFPA 20, *Standard for the Installation of Stationary Pumps for Fire Protection*
NFPA 70, *National Electrical Code*.
Factory Mutual (FM)

The controller shall be listed by:
Underwriters Laboratories, Inc., in accordance with UL508, *Standard for Industrial Controls*
Canadian Standards Association CSA-C22.2, *Standard for Industrial Control Equipment* (cUL)

1.2 Enclosure

The controller components shall be housed in a NEMA Type 1 (IEC IP20) drip-proof, wall mounted enclosure with bottom entry gland plate.

1.3 Operation

The alarm panel shall have individual LED lights to indicate its alarm condition which shall remain lighted until the alarm condition has been corrected. The alarm panel shall also have an audible alarm which will sound when the alarm conditions occur and may be silenced by pressing a SILENCE ALARM push-button.

Each alarm initiation shall be subsequent to any and all previous alarm conditions so that the silence push-button acknowledgment of any one alarm will not prevent the audible alarm from sounding on successive alarm conditions.

The alarm panel shall have a PUSH-TO-TEST push-button for manually testing all LED lights, audible alarms and output circuits. All alarm LED's and push-buttons shall be plainly marked for identification.

1.4 Manufacturer

The alarm panel shall be a Firetrol model FTA200-A for use with electric fire pump controllers, FTA200-AA for use with 2 electric fire pump controllers or model FTA200-F for use with diesel engine fire pump controllers, FTA200-FF for use with 2 diesel engine fire pump controllers or a FTA200-AF for use with 1 electric fire pump controller and 1 diesel engine fire pump controller.

Firetrol™

3362 Apex Peakway
Apex, North Carolina 27502
P +1 919 460 5200
F +1 919 460 5250
www.firetrol.com

While every precaution has been taken to ensure accuracy and completeness herein, Firetrol assumes no responsibility, and disclaims all liability, for damages resulting from use of this information or for any errors or omissions. Specifications and drawings are subject to change without notice. ©2025 Firetrol, All Rights Reserved.

Remote Alarm Panels for use with 1 Electric and 1 Diesel Engine Fire Pump Controller



Description—Firetrol® FTA200 alarm panels are designed to meet the NFPA 20 specifications requiring a remote alarm panel when the pump house or pump room is not constantly attended. The alarm panel must be installed in a location that is under supervision at all times.

Approvals—These alarm panels are listed by Underwriter's Laboratories, Inc., in accordance with UL508, *Standard for Industrial Controls*, and approved by Factory Mutual. They are designed to meet or exceed the requirements of the approving authorities listed above as well as NFPA 20, *Installation of Centrifugal Fire Pumps*.

Standard Features—The following are included as standard with each controller:

Type A Section – Provides audible and visible alarm indication for the following conditions:

- Supervisory Power On (Visible Only)
- Power / Phase Failure (Audible and Visible)
- Phase Reversal (Audible and Visible)
- Motor Trouble (Audible and Visible)
- Pump Room Alarm (Audible and Visible)
- Pump Running (Audible and Visible)

Type F Section – Provides alarm indication for the following conditions:

- Main Switch In Hand or Off (Audible and Visible)
- Controller Trouble (Audible and Visible)
- Pump Room Alarm (Audible and Visible)
- Engine Trouble (Audible and Visible)
- Engine Running (Audible and Visible)

Construction – FTA200 alarm panels make use of printed circuit boards which provide reliable and trouble free service. The enclosures are NEMA Type 1 (IEC IP20) for indoor wall mounting. A bottom entry gland plate is provided in the enclosure. The standard enclosure color is red.

Mounted on the enclosure door are the LED lights for visible alarm indication, the SILENCE ALARM push-button and the LAMP TEST push-button.

An alarm bell for audible indication is mounted on the side of the enclosure.

Each LED will illuminate to indicate its alarm condition and will remain lighted until the abnormal condition has been corrected. The audible alarm will sound when the alarm conditions occur and will continue to sound until the abnormal condition has been corrected or the SILENCE ALARM push-button has been pressed. Pressing the SILENCE ALARM push-button will silence the audible alarm but will not extinguish the LED. If another alarm condition occurs the audible alarm will again sound until silenced by the SILENCE ALARM push-button or until the abnormal condition has been corrected.

The LAMP TEST push-button is supplied for manually testing the LED's.

For Model Number Information and Options & Modifications see Publication SD200-62

Firetrol™

3362 Apex Peakway
Apex, North Carolina 27502
P +1 919 460 5200
F +1 919 460 5250
www.firetrol.com

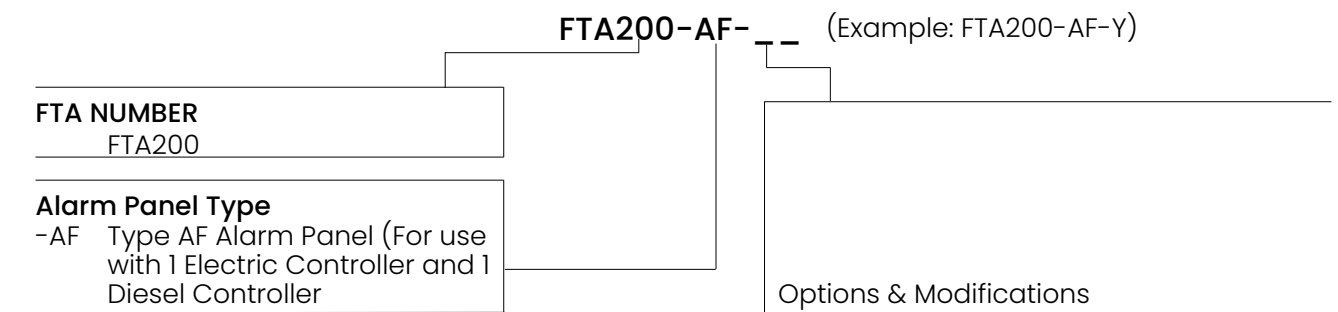
While every precaution has been taken to ensure accuracy and completeness herein, Firetrol assumes no responsibility, and disclaims all liability, for damages resulting from use of this information or for any errors or omissions. Specifications and drawings are subject to change without notice. ©2025 Firetrol, All Rights Reserved.

Model Number Selection Guide



FTA200-AF

Remote Alarm Panels For Use With Electric and Diesel Engine Fire Pump Controllers



SPECIAL ENCLOSURES

Option	Description
---	Enclosure, NEMA Type 1 (IP20), Painted Steel
-Q	Enclosure, NEMA Type 2 (IP22), Painted Steel
-EX	Enclosure, NEMA Type 4 (IP65), Painted Steel
-F	Enclosure, NEMA Type 4X (IP66), #304 Stainless Steel, Brushed Finish
-FXP	Enclosure, NEMA Type 4X (IP66), #304 Stainless Steel, Painted Finish

Optional Alarms - ELECTRIC

Option	Description
-AM	Alarm, Audible/Visible, Fail To Start
-BYI	Alarm, Audible/Visible, Overcurrent
-EJI	Alarm, Audible/Visible, Flow Meter Open
-Y	Alarm, Specify Number Of Alarms, Function of Each & Nameplate Marking

Optional Alarms - DIESEL

Option	Description
-AV	Alarm, Audible/Visible, Low Pump Room Temperature
-AW	Alarm, Audible/Visible, Reservoir Low
-AYI	Configurable Low Suction Pressure Visible/Output Contacts with External Digital Input
-AK	Alarm, Audible/Visible, Low Oil Pressure
-AL	Alarm, Audible/Visible, High Water Temperature
-AM	Alarm, Audible/Visible, Fail To Start
-API	Alarm, Audible/Visible, Main Switch In Manual
-AR	Alarm, Audible/Visible, Main Switch In Off
-ASI	Alarm, Audible/Visible, Main Switch In Auto
-BTC	Alarm Output Contacts, Charger #1 & #2 Failure (Form-C, SPDT)
-CFC	Alarm Output Contacts, Battery #1 & #2 Failure (Form-C, SPDT)
-LC	Alarm, Audible/Visible, High Fuel Level
-LEI	Alarm, Audible/Visible, Fuel Spill
-Y	Alarm, Specify Number Of Alarms, Function of Each & Nameplate Marking

Option	Miscellaneous Description
-BA	AC Input, 220-240V
-BS	Fire Pump Start Push-button

INFORMATION REQUIRED WITH ORDER

- 1) Catalog number of alarm panel.
- 2) Catalog number of controller to be used with alarm panel.
- 3) Modifications if any.

Firetrol

3412 Apex Peakway
Apex, North Carolina 27502
P +1 919 460 5200
F +1 919 460 5250
www.firetrol.com

While every precaution has been taken to ensure accuracy and completeness herein, Firetrol assumes no responsibility, and disclaims all liability, for damages resulting from use of this information or for any errors or omissions. Specifications and drawings are subject to change without notice. ©2025 Firetrol, All Rights Reserved.

Publication SD200-62 Rev. C



© Firetrol, Not for construction.
Subject to change without notice.

BY		DD/MM/YY
DRAWN BY	ACD	21/11/25
FINAL APPROVAL	FC	21/11/25

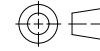
ALARM PANEL FOR ELECTRIC & DIESEL FIRE PUMP CONTROLLER

MODEL: FTA200-AF

BUILT TO THE LATEST EDITION OF THE UL 508A

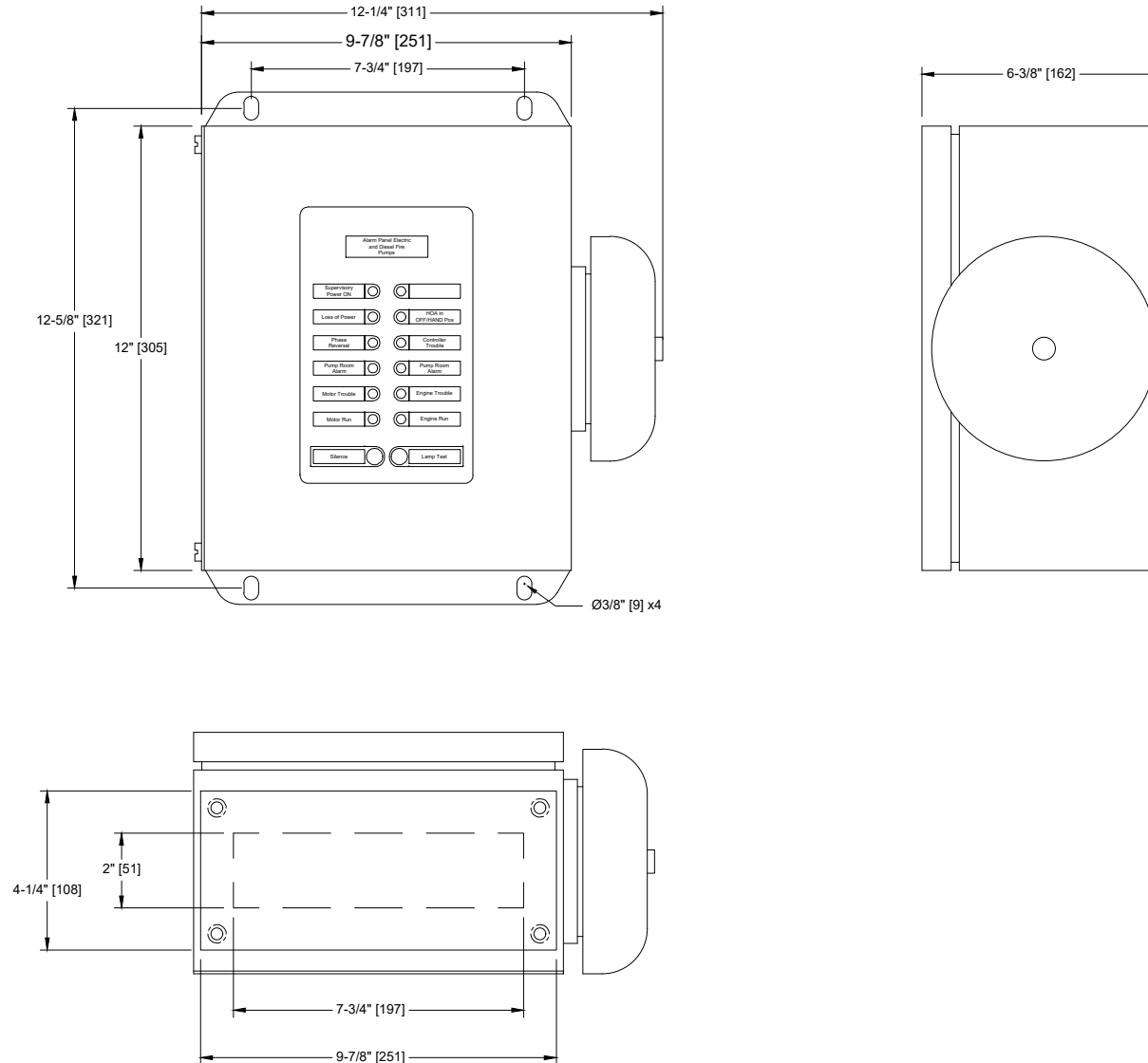


NYC
Dpt of Building
Approved



THIRD ANGLE
PROJECTION

DRAWING NUMBER
DD200AF-101/E
DWG REV. 0
SHEET 1 OF 1



Notes:

- Standard NEMA: NEMA 1
- Standard Paint: Textured Red RAL 3002.
- All Dimensions are in Inches [Millimeters]
- Use Watertight Conduit and Connector Only.
- Protect Equipment Against Drilling Chips.
- Door Swing Equal to Door Width

Drawing for information only.

Manufacturer reserves the right to modify this drawing without notice.

Contact manufacturer for "As Built" drawing.

*Dimensions may change depending on option required. Consult Factory for exact dimensions.



© Firetrol, Not for construction.
Subject to change without notice.

BY		DD/MM/YY
DRAWN BY	ACD	21/11/25
FINAL APPROVAL	FC	21/11/25

ALARM PANEL FOR ELECTRIC & DIESEL FIRE PUMP CONTROLLER

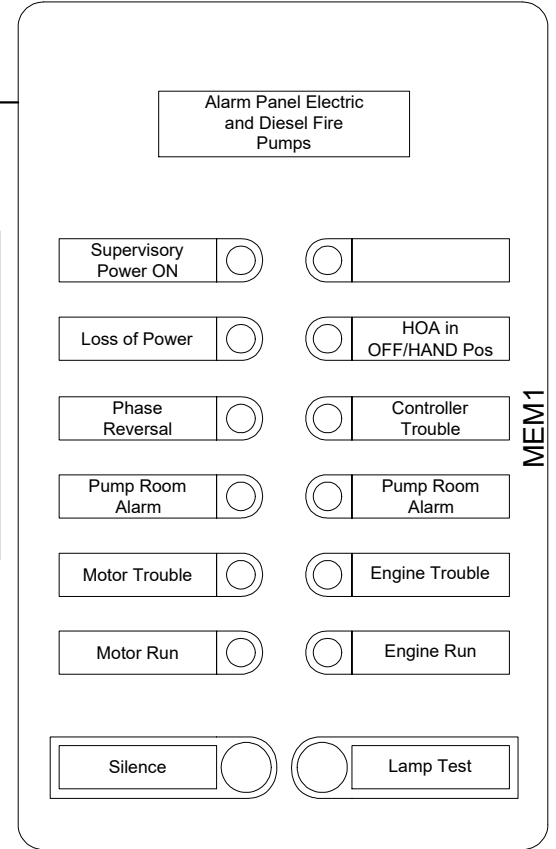
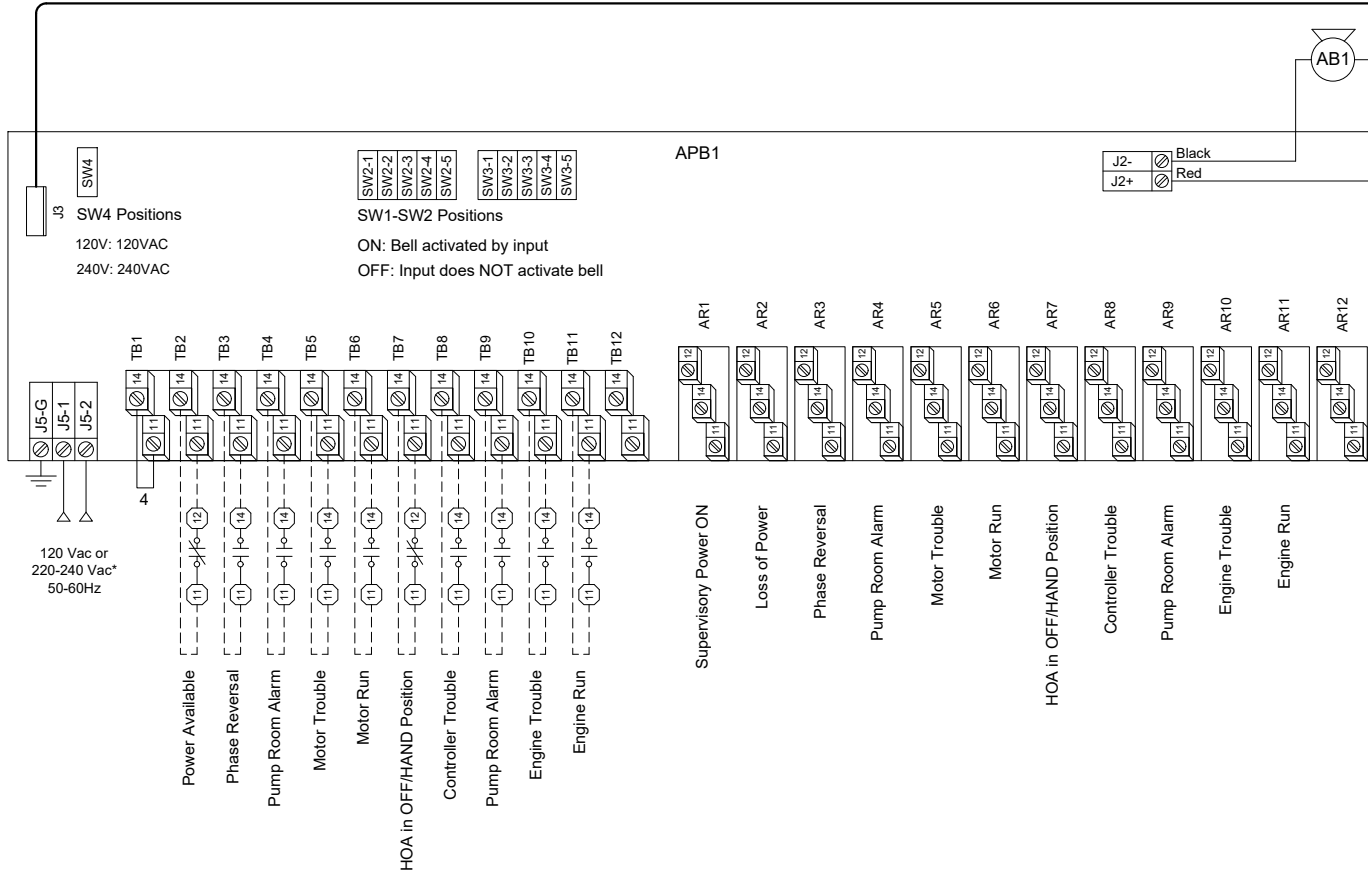
MODEL: FTA200-AF

BUILT TO THE LATEST EDITION OF THE UL 508A



NYC
Dpt of Building
Approved

DRAWING NUMBER
WS200AF-101/E
DWG REV. 0
SHEET 1 OF 1



- ☐ : Internal Terminals
 - Power Supply :
 - Wire Size : 12-24 AWG
 - Torque : 0.4 Nm
- ☐ : Related Controller Terminals
 - Field Connections :
 - Wire Size : 12-24 AWG
 - Torque : 0.5 Nm
- Alarm Contact :
 - Type : SPDT
 - Wire Size : 14-24 AWG
 - Torque : 0.4 Nm
- Field Connections :
 - Wire Size : 12-22 AWG
 - Torque : 0.4 Nm

(*)The incoming voltage can be change via Dipswitch (SW4)