

Project Information

VOLTAGE/POWER TABLE	
LINE VOLTAGE	MOTOR HORSEPOWER
200-208	60-100
220-240	75-125
380-415	100-150
440-480	150-250
550-600	---

**DRAWINGS INCLUDED IN THIS PACKAGE ARE FOR STANDARD
CONTROLLERS. ACTUAL “AS BUILT” DRAWINGS MAY DIFFER FROM
THOSE SHOWN HERE.**

Firetrol, Inc.

3412 Apex Peakway
Apex, North Carolina 27502
P +1 919 460 5200
F +1 919 460 5250

www.firetrol.com

While every precaution has been taken to ensure accuracy and completeness herein, Firetrol, Inc. assumes no responsibility, and disclaims all liability, for damages resulting from use of this information or for any errors or omissions. Specifications and drawings are subject to change without notice. ©2020 Firetrol, Inc., All Rights Reserved.

Firetrol Mark IIxG Electric Fire Pump Controller

FTA3130M – Variable Speed Starting with Digital Solid State Starting Bypass
Specifications

1.0 Main Fire Pump Controller

The Mark IIxg FTA 3130M provides a variable frequency drive (VFD) in a PID process control loop to control the speed of a centrifugal pump for the purpose of limiting the system pressure in a sprinkler system used for fire protection. The controller shall control a fire pump motor having the horsepower, voltage, phase and frequency rating shown on the plans and drawings. The controller shall be equipped with both automatic and manual bypass to start and run the motor should a problem arise with the VFD. The controller shall be provided with a digital solid state starting bypass.

1.1 Standards, Listings & Approvals

The controller shall conform to all the requirements of the latest editions of:
NFPA 20, *Standard for the Installation of Stationary Pumps for Fire Protection*
NFPA 70, *National Electrical Code*.

The controller shall be listed by:

Underwriters Laboratories, Inc., in accordance with UL218, *Standard for Fire Pump Controllers* Canadian Standards Association CSA-C22.2, *Standard for Industrial Control Equipment* (cUL)
CE – Low Voltage Directive

The controller shall be approved by:

Factory Mutual (IEC 62091)

The City of New York for fire pump service

1.2 Enclosure

The controller components shall be housed in a NEMA Type 12 (IEC IP54) drip-proof, floor mounted enclosure.

1.3 Withstand Ratings (Short Circuit Current Ratings)

All controller components shall be front mounted, wired and front accessible for maintenance. The minimum withstand rating of the controllers shall not be less than 100,000 Amps RMS Symmetrical at 200-600 Volts*. If the available system fault current exceeds these ratings, the controllers shall be supplied with a withstand rating of 150,000 or 200,000 Amps RMS Symmetrical, as required.

*Note: 100,000 Amp withstand rating not available in some larger horsepower. Consult factory for details.

1.4 Isolation Switch and Circuit Breaker

The controller shall include a motor rated combination isolating disconnect switch/circuit breaker, mechanically interlocked and operated with a single, externally mounted handle. When moving the handle from OFF to ON, the interlocking mechanism shall sequence the isolating disconnect switch ON first, and then the circuit breaker. When the handle is moved from ON to OFF, the interlocking mechanism shall sequence the circuit breaker OFF first, and then the isolating disconnect switch. The isolating disconnect switch/circuit breaker shall be mechanically interlocked so that the enclosure door cannot be opened with the handle in the ON position except by a hidden tool operated bypass mechanism. The isolating disconnect switch/circuit breaker shall be capable of being padlocked in the OFF position for installation and maintenance safety, and shall also be capable of being locked in the ON position without affecting the tripping characteristics of the circuit breaker. The controller door shall have a locking type handle and three point cam and roller vault type hardware. The circuit breaker trip curve adjustment shall be factory set, tested and sealed for the full load amps of the connected motor. The circuit breaker shall be capable

of being field tested to verify actual pick up, locked rotor, and instantaneous trip points after field installation without disturbing incoming line and load conductors.

1.5 Operator Interface

The fire pump controller shall feature an operator interface with user keypad. The interface shall monitor and display motor operating conditions, including all alarms, events, and pressure conditions. All alarms, events, and pressure conditions shall be displayed with a time and date stamp. The display shall be a 128x64 Backlit LCD capable of customized graphics. The display and interface shall be NEMA rated for Type 2, 3R, 4, 4X, and 12 protection and shall be fully accessible without opening the controller door. The display and user interface shall utilize multiple levels of password protection for system security. A minimum of 3 password levels shall be provided.

1.6 Ammeter/Voltmeter

The fire pump controller operator interface shall be capable of displaying true RMS digital motor voltage and current measurements for all three phases simultaneously. Displays requiring push-button and selector switches to toggle between phases or current and voltage shall not be accepted.

Voltage and current shall be measured by True RMS technology to provide the most accurate measurement for all sine waves, including non-sinusoidal waveforms. Average responding meters will not be accepted.

1.7 Solid State Pressure Transducers

The controller shall be supplied with two solid state pressure transducers with a range of 0-300 psi (0-20.7 bar) ± 1 psi. One transducer shall be an input to the Mark IIxg and for display of the system pressure and the other transducer shall be a pressure input to the drive for speed control. Start, Stop and System Pressure shall be digitally displayed and adjustable through the user interface. The pressure transducers shall be mounted inside the controller to prevent accidental damage. The pressure transducers shall be directly pipe mounted to a bulkhead pipe coupling without any other supporting members. Field connections shall be made externally at the controller couplings to prevent distortion of the pressure sensing elements.

1.8 VFD Modes of Operation

The controller shall operate a variable frequency drive (VFD) in a PID process control loop to control the speed of a centrifugal pump for the purpose of limiting the system pressure in a sprinkler system used for fire protection. The PID closed-loop controller, resident in the Control Techniques VFD, receives its set point from the Mark IIxg and its feedback from a pressure transducer measuring the system pressure. The output of the PID shall be connected to the speed input of the drive which controls the speed of the AC induction motor driving the pump to maintain the system pressure at the set point.

The operator interface as the overall fire pump control device is to respond automatically to a low pressure condition with a call to start of the VFD. The Mark IIxg shall monitor and control the operation of VFD via 1) the RS485 serial communications link to the drive and 2) the discrete digital I/O lines to the control terminals of the drive. The VFD shall be entirely configured by the Mark IIxg through the serial communications link as well.

Upon detection of a failure in the drive, it shall bypass and isolate the VFD through the line and load isolation contactors, and run the pump across-the-line at rated speed after first soft starting. The operator may choose to manually operate the drive in BYPASS or VFD. Operation in Bypass mode produces both an audible local alarm and a remote alarm for annunciation of an abnormal condition in the controller.

Set pressure is maintained until the min. run time of 10 minutes expires whereupon the controller temporarily lowers the set pressure in order to ramp the drive down sufficiently in speed to perform a sincerity check on system pressure for a period of 5-10 seconds. If system pressure remains above the start pressure during the sincerity check, then system pressure is stable, indicating there is no longer a demand for flow. Since the low pressure condition no longer exists, the Mark IIxg soft stops the drive.

1.9 VFD Mode – Manual Operation

The pump may be operated manually via the local start and stop push-buttons. If the VFD is Ready, the controller will soft start the drive which will ramp the pump up to the speed required to maintain set pressure under PID control upon the operation of the start push-button.

Set pressure is maintained until the operator presses stop, whereupon the controller temporarily lowers the set pressure in order to ramp the drive down sufficiently in speed to perform a sincerity check on system pressure for a period of 5-10 seconds. If system pressure remains above the start pressure during this sincerity check, then system pressure is stable, indicating there is no longer a demand for flow, and the Mark IIxg proceeds to soft stop the drive.

If system pressure falls below the start pressure during the sincerity check, a low pressure condition has developed which the Mark IIxg recognizes as an automatic call to start. The Mark IIxg responds to the call to start by resetting the PID reference to set pressure which ramps the pump back up set pressure. The Mark IIxg will continue operating the controller in automatic until system pressure stabilizes indicating there is no longer a demand for flow.

2.0 VFD Mode – Emergency Run

If an attempt to engage the emergency run bar is made in VFD mode, the Mark IIxg shall drop the drive out of the circuit and go to bypass using the hard stop drive procedure. An over pressure event will be captured and displayed as an alarm message on the Mark IIxg if system pressure (not PID feedback pressure) is equal to or greater than 115% of Set pressure. A time delay used in the Over Pressure alarm logic shall be applied to avoid nuisance alarms.

2.1 VFD SMARTCARD Operation

The drive shall have a smart card memory device for saving set up parameters downloaded into the drive from the Mark IIxg. This can serve as a valuable backup for those critical parameters entered into the Mark IIxg by the operator to tune the drive, i.e. Pgain, Igain, acceleration, deceleration, etc. If the Mark IIxg failed, its replacement could obtain these important parameters from the smart card if during system initialization, it detects that these parameters are different from the defaults and that these parameters are valid, i.e. that they lie within established boundaries.

A weekly test timer shall be provided as standard. The controller shall have the ability to program the time, date, and frequency of the weekly test. In addition, the controller shall have the capability to display a preventative maintenance message for a service inspection. The message text and frequency of occurrence shall be programmable through the user interface.

2.2 Power Transfer Switch

The power transfer switch shall be an ASCO 7000 series switch with Group 5 control panel in a NEMA Type 12 (IEC IP54) drip-proof enclosure attached directly to or in close proximity to the fire pump controller. The fire pump controller/power transfer switch shall be factory assembled, wired and tested as a unit prior to shipment.

The automatic transfer switch shall consist of an inherently double throw power transfer switch mechanism and a microprocessor control panel to provide automatic operation. The transfer switch and control panel shall be of the same manufacturer. The transfer switch control panel shall have a 4 line 20 character LCD display and keypad for viewing all available data and setting desired operational parameters. Voltage and frequency on both the normal and emergency sources shall be continuously monitored. Source status screens shall be provided for both normal and emergency to provide digital readout of voltage frequency and phase rotation on all 3 phases.

Designs utilizing components of molded case circuit breakers, contactors or parts thereof which are not intended for continuous duty, repetitive switching or transfer between two active power sources are not acceptable.

2.3 Event Recording

Memory – The controller shall record all operational and alarm events to system memory. All events shall be time and date stamped and include an index number. The system memory shall have the capability of storing 3000 events and allow the user access to the event log via the user interface. The user shall have the ability to scroll through the stored messages in groups of 1 or 10.

2.4 USB Host Controller

The controller shall have a built-in USB Host Controller. A USB port capable of accepting a USB Flash Memory Disk shall be provided. The controller shall save all operational and alarm events to the flash memory on a daily basis. Each saved event shall be time and date stamped. The total amount of historical data saved shall solely depend on the size of the flash disk utilized. The controller shall have the capability to save settings and values to the flash disk on demand via the user interface.

2.5 Seismic Certification

The controller shall be certified to meet or exceed the requirements of the 2012 International Building Code and the 2013 California Building Code for Importance Factor 1.5 Electrical Equipment for Sds equal to 1.88 or less severe seismic regions. Qualifications shall be based upon successful tri-axial shake-table testing in accordance with ICC-ES AC-156. Certification without testing shall be unacceptable. Controller shall be clearly labeled as rated for installation in seismic areas and a Certificate of Conformance shall be provided with the controller.

2.6 Manufacturer

The controller shall be a Firetrol brand.



Mark IIx6 Electric Fire Pump Controllers

Product Description FTA3100M, 3110M, 3130M with FTA950 (Opt. -TSA) Variable Speed Starting with Power Transfer Switch



Description – Firetrol® Variable Speed Electric Fire Pump Controllers provide a variable frequency drive (VFD) in a PID process control loop to control the speed of a centrifugal pump for the purpose of limiting system pressure in a fire sprinkler system. These controllers are available in the following configurations:

FTA3100M – VFD with Across-the-Line Bypass

FTA3110M – VFD with Autotransformer Bypass

FTA3130M – VFD with Digital Soft Start Bypass

Power Transfer Switches are completely assembled with Firetrol Electric Fire Pump Controllers. The power transfer switches are built for use with generator set or 2nd utility use. The entire package of power transfer switch and controller is completely factory assembled, wired, tested and shipped as a complete unit for easy field connection to the power sources and the fire pump motor.

Approvals – Firetrol fire pump controllers are listed by Underwriters' Laboratories, Inc., in accordance with UL218, *Standard for Fire Pump Controllers*, CSA, *Standard for Industrial Control Equipment*. They are built to meet or exceed the requirements of the approving authorities as well as NEMA, the latest editions of NFPA 20, *Installation of Centrifugal Fire Pumps*, NFPA 70, *National Electrical Code* and are approved by Factory Mutual.

The power transfer switches are listed by Underwriters' Laboratories, Inc., in accordance with UL218, *Standard for Fire Pump Controllers*; UL1008, *Automatic Transfer Switches*; UL508, *Industrial Control Equipment*; CSA, *Standard for Industrial Control Equipment*; and approved by Factory Mutual. They are built to meet or exceed the requirements of the approving authorities as well as NEMA and the latest editions of NFPA 20, *Installation of Centrifugal Fire Pumps*, and NFPA 70, *National Electrical Code*.

Standard Features—The following are included as standard with each controller:

- Voltage surge protector
- Main Disconnect Switch sized for connected motor horsepower and voltage
- Fire pump Circuit Breaker
- Single handle Isolating Disconnect Switch/Circuit Breaker mechanism
- Motor contactor
- Emergency Manual Run Mechanism to mechanically close motor contactor contacts in an emergency condition
- Built-in Start and Stop push-buttons to bypass automatic start circuits
- Minimum Run Timer / Off Delay Timer
- Daylight Savings Time Option
- Weekly Test Timer
- Elapsed Time Meter
- Door mounted display/interface panel featuring a 128 x 64 pixel backlit LCD Graphical Display, Membrane Type User Control Push-buttons and easy to read LED Indicators for:
 - POWER AVAILABLE
 - ALARM
 - SYSTEM PRESSURE LOW
 - PUMP RUNNING
 - DELUGE OPEN

- REMOTE START
- INTERLOCK ON
- FAIL TO START
- MOTOR OVERLOAD
- PHASE FAILURE
- PHASE REVERSAL
- AUTOMATIC SHUTDOWN DISABLED
- OVERVOLTAGE
- UNDERVOLTAGE
- Digital Pressure Display
- USB Host Controller and Port
- Solid State Pressure Transducer
- Data Log
- Event Log (3000 Events)
- True RMS Metering with simultaneous 3 Phase Display of Amps, Volts, Frequency, Pressure and Alarm Messages
- Disk Error message
- Disk Near Full message
- Pressure Error message
- Motor Over 320% message
- Local Start message
- Remote Start message
- Emergency Start message
- Fail To Start message
- Undervoltage message
- Overvoltage message
- NEMA Type 12 enclosure (IEC IP54)
- Suitable for use as Service Equipment
- Each standard controller comes with user configurable options for:
 - Interlock Alarm • Low Pressure Audible
 - Low Suction • Pump Run
 - User Defined Input • Weekly Test
- Drive Ready pilot light
- Bypass Active pilot light
- Normal / Bypass selector switch

Transfer Switch Standard Features — The following are included as standard with each controller:

- Visual indication of the following: Alternate Power Lock Rotor Current • Alternate Power Phase Reversal • Automatic Transfer Switch Trouble
- Audible and Visible indication of: Alternate Power Circuit Breaker OFF or Tripped • Alternate Power Isolating Switch Tripped/Open
- Transfer Switch test push-button
- Bypass for re-transfer and generator shutdown
- The following adjustable time delays are provided:
 - Momentary Normal Power Outage Override • Emergency Power Available Delay • Transfer Trouble Delay • Retransfer to Normal • Generator Cooldown
- Remote Alarm Contacts For: Emergency Isolating Switch Off • Transfer Switch in Normal Position • Transfer Switch in Emergency Position

FOR MODEL # INFORMATION SEE
PUBLICATION SD3100-61

FOR OPTIONS AND MODIFICATIONS SEE
PUBLICATION OP3100-72

Firetrol, Inc.

3412 Apex Peakway
Apex, North Carolina 27502
P +1 919 460 5200
F +1 919 460 5250
www.firetrol.com

While every precaution has been taken to ensure accuracy and completeness herein, Firetrol, Inc. assumes no responsibility, and disclaims all liability, for damages resulting from use of this information or for any errors or omissions. Specifications and drawings are subject to change without notice. ©2019 Firetrol, Inc., All Rights Reserved.

Publication PD3100M-61

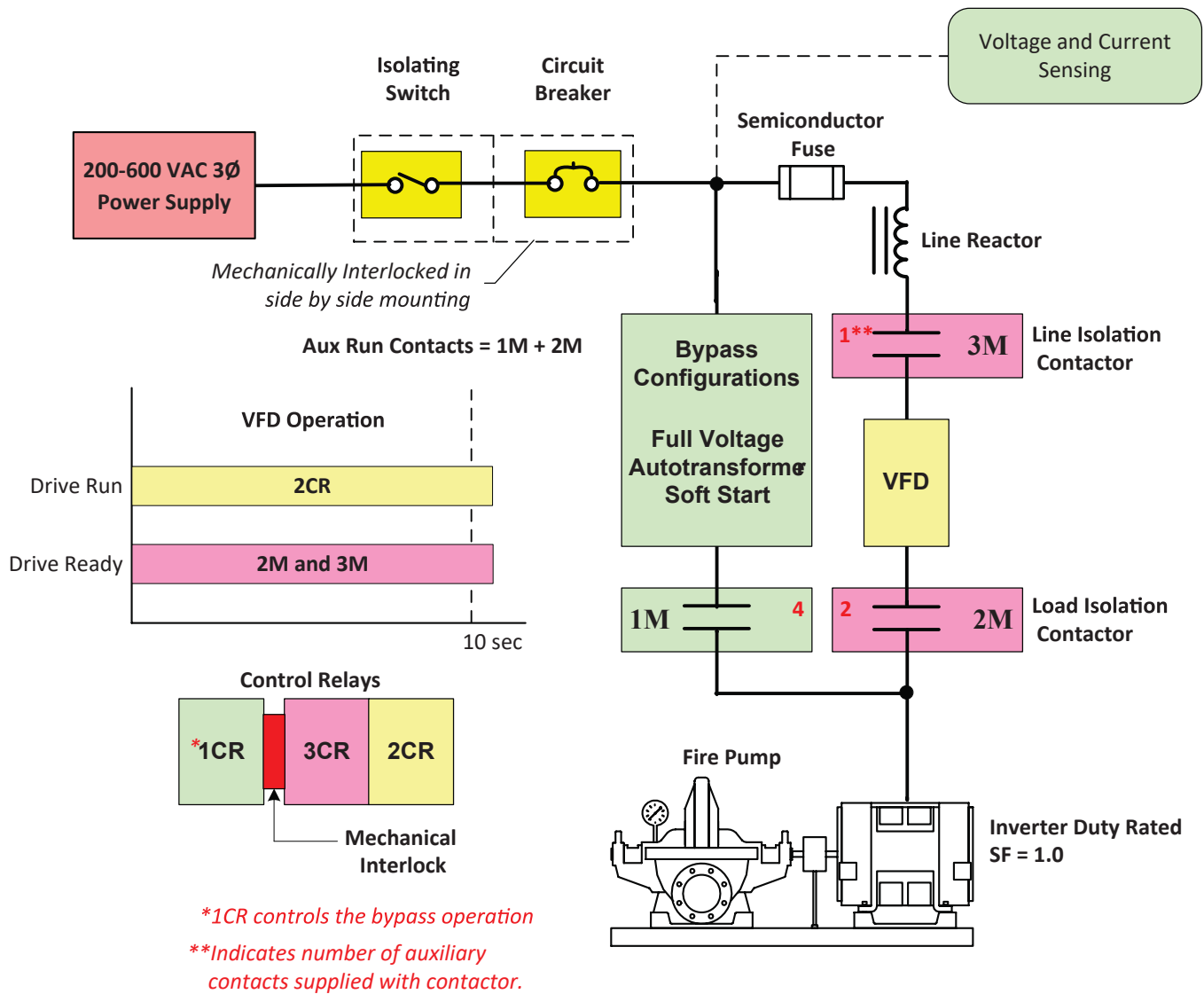


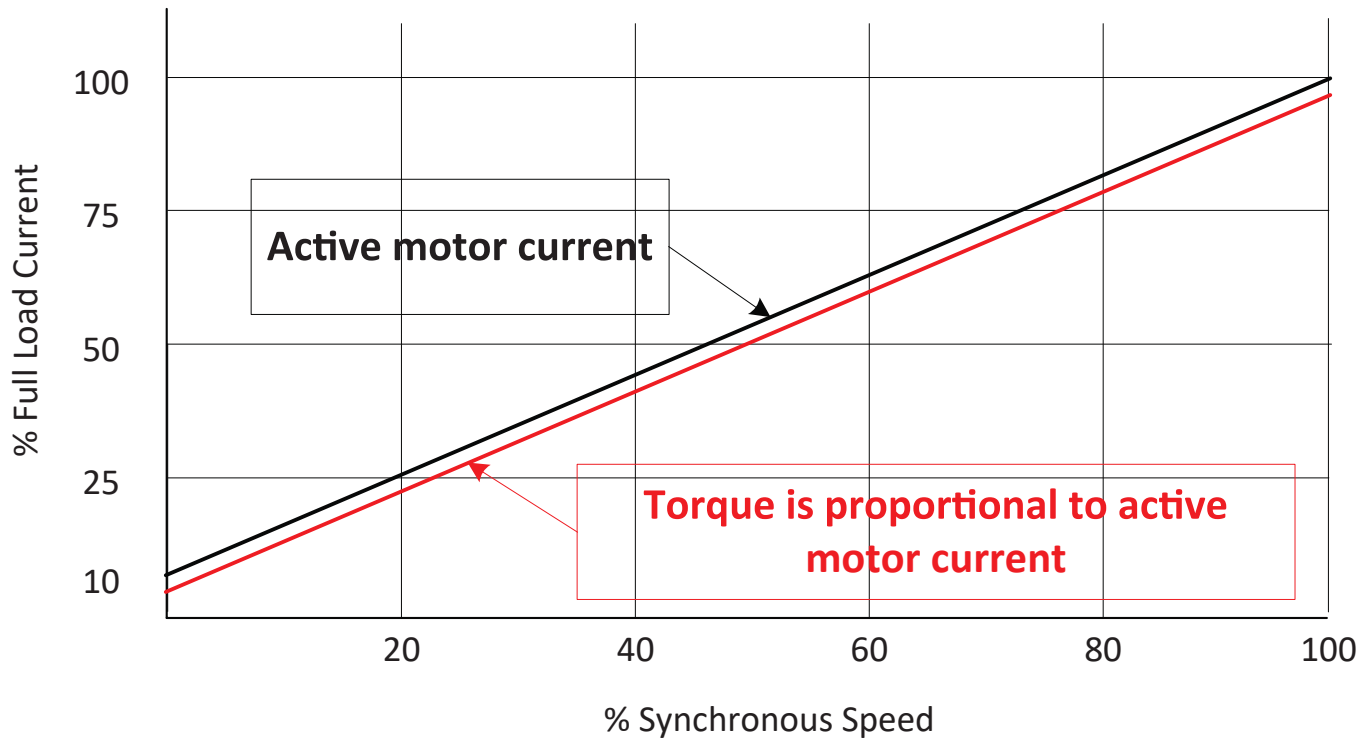
Mark IIx6 Electric Fire Pump Controllers

General Starting Configuration

FTA3100M, 3110M, 3130M

Variable Speed Starting





Firetrol, Inc.

3412 Apex Peakway
Apex, North Carolina 27502
P +1 919 460 5200
F +1 919 460 5250
www.firetrol.com

While every precaution has been taken to ensure accuracy and completeness herein, Firetrol, Inc. assumes no responsibility, and disclaims all liability, for damages resulting from use of this information or for any errors or omissions. Specifications and drawings are subject to change without notice. ©2019 Firetrol, Inc., All Rights Reserved.



Model Number Selection Guide FTA3100M, 3110M, 3130M with FTA950 (Opt. -TSA)

Mark IIxG Electric Fire Pump Controllers

Variable Speed Starting with Power
Transfer Switch

VARIABLE SPEED ELECTRIC FIRE PUMP CONTROLLERS Example: FTA3130M-AM75B-TSA-xx

Bypass Method

3100M - VFD with Across-The-Line Bypass
3110M - VFD with Autotransformer Bypass
3130M - VFD with Digital Soft Start Bypass

Start/Stop Options

A - Automatic start with timed permissive stop after minimum run time and manual start with manual stop, field convertible to automatic start and manual start with manual stop only
B - Automatic start and manual start with manual stop
C - Manual start and stop

Short Circuit Current Rating

N - Intermediate short circuit rating
150,000 Amperes RMS Sym. at 200 - 600 V
P - High short circuit rating
200,000 Amperes RMS Sym. at 200 - 600 V

Horsepower Rating

03 - 3 HP	100 - 100 HP
05 - 5 HP	125 - 125 HP
07 - 7 1/2 HP	150 - 150 HP
10 - 10 HP	200 - 200 HP
15 - 15 HP	250 - 250 HP
20 - 20 HP	300 - 300 HP
25 - 25 HP	350 - 350 HP
30 - 30 HP	400 - 400 HP
40 - 40 HP	
50 - 50 HP	
60 - 60 HP	
75 - 75 HP	

Modifications

See Publication
OP3100-72

Automatic Transfer Switch

Three Phase Voltage

A - 220-240 Volt, 60 Hertz (230 V)
AZ - 220-230 Volt, 50 Hertz
B - 440-480 Volt, 60 Hertz (460 V)
BZ - 415 Volt, 50 Hertz
C - 550-600 Volt, 60 Hertz (575 V)
F - 380 Volt, 60 Hertz
FZ - 380 Volt, 50 Hertz
H - 208 Volt, 60 Hertz
HH - 200 Volt, 60 Hertz

Firetrol, Inc.

3412 Apex Peakway
Apex, North Carolina 27502
P +1 919 460 5200
F +1 919 460 5250
www.firetrol.com

While every precaution has been taken to ensure accuracy and completeness herein, Firetrol, Inc. assumes no responsibility, and disclaims all liability, for damages resulting from use of this information or for any errors or omissions. Specifications and drawings are subject to change without notice. ©2019 Firetrol, Inc., All Rights Reserved.

Publication SD3100M-61

Mark IIxG Variable Speed Electric Fire Pump Controllers

SPECIAL ENCLOSURES

Option	Description
---	Enclosure, NEMA Type 12 (IEC IP54), Painted Steel (Standard)
---	Other – Enclosure (consult factory for availability)

CIRCUIT BREAKER OPTION*

Option	Description
-N	Intermediate Short Circuit Current Rating – 150,000 Amps RMS Sym
-P	High Short Circuit Current Rating – 200,000 Amps RMS Sym

* Note: Intermediate and High withstand ratings may not be available for all horsepower and voltage combinations. Consult factory for availability.

ANTI-CONDENSATION SPACE HEATERS

Option	Description
None	
-H	Space Heater, 120V Externally Powered with Circuit Breaker
-J	Space Heater, 120V Externally Powered with Circuit Breaker & Thermostat
-K	Space Heater, 120V Externally Powered with Circuit Breaker & Humidistat
-L	Space Heater, 240V Externally Powered with Circuit Breaker
-M	Space Heater, 240V Externally Powered with Circuit Breaker & Thermostat
-N	Space Heater, 240V Externally Powered with Circuit Breaker & Humidistat

PRESSURE TRANSDUCERS, SOLENOID VALVES, PLUMBING

Option	Description
---	Wetted Parts including Pressure Sensor, 300 PSI (20.4 Bar) Fresh Water (Standard)
-B	Wetted Parts including Pressure Sensor, 600 PSI (42 Bar) Fresh Water
-C	Wetted Parts including Pressure Sensor, 300 PSI (20.4 Bar), Sea Water
-D	Wetted Parts including Pressure Sensor, 500 PSI (34.5 Bar), Sea Water

ALARMS

Option	Description
-AC	Extra Alarm Output Contacts, Pump Operating (2 Form-C)
-AF	Alarm, Audible/Visible, Low Pump Room Temperature
-AG	Alarm, Audible/Visible, Reservoir Low
-AH	Alarm, Audible/Visible, Low Suction Pressure
-AM	Alarm Output Contacts, Fail to Start
-AV	Alarm Output Contacts, Low Pump Room Temperature (Requires Option -AF)
-AW	Alarm Output Contacts, Reservoir Low (Requires Option -AG)
-AY	Alarm Output Contacts, Low Suction Pressure (Requires Option -AH)
-BW	Alarm Output Contacts, Phase Failure/Phase Reversal
-BY	Alarm Output Contacts, Pump Overload
-COM	Alarm, Audible/Visible/Output Contacts, Low Suction Pressure with Manual Reset Option, Pressure Switch NOT Included (Do not use Options -AH or -AY)
-CTS	Alarm, Audible/Visible/Output Contacts, Low Suction Pressure Shutdown with Manual Reset Option and Pressure Switch (Do not use Options -AH or -AY)
-EG	Alarm Audible/Visible, Main Relief Valve Discharge
-EH	Alarm Output Contacts, Main Relief Valve Discharge (Requires Option -EG)
-EJ	Alarm Audible/Visible, Flow Meter On
-EK	Alarm Output Contacts, Flow Meter On (Requires Option -EJ)
-KH	Alarm Output Contacts, Common Alarm
-JR	Visible Indicator, Jockey Pump Operating

ALARMS Cont..

Option	Description
-JT	Alarm, Audible/Visible, Jockey Pump Trouble
-P	Alarm, Audible/Visible, Built-In 120V Supervisory System (Includes Visible Supervisory Voltage Normal Indication and Audible Pump Operating, Phase Failure and Phase Reversal Indication)
-PE	Alarm Output Contacts, Low System Pressure (Pump on Demand)
-PT	Alarm, Audible/Visible, Built-In 240V Supervisory System (Includes Visible Supervisory Voltage Normal Indication and Audible Pump Operating, Phase Failure and Phase Reversal Indication)

MISCELLANEOUS

Option	Description
-AZ	Thermostat, Low Pump Room Temperature, Mounted and Wired
-ED	Output Contacts, Load Shed (Selectable power source and adjustable time delay to remove non-critical loads before starting)
-EL	Series Pumping Operation, High Zone Controller
-EM	Series Pumping Operation, Mid Zone Controller
-EN	Series Pumping Operation, Low Zone Controller
-FZX	Rating, nameplate to be marked 380-400V (Use with voltage code "F" or "FZ")
-IEC	Marking, CE with External Wet Parts (Requires NEMA Type 12 (IP54) Enclosure as Minimum)
-IECI	Marking, CE with Internal Wet Parts (Requires NEMA Type 12 (IP54) Enclosure as Minimum)
-OSP	OSHDP Seismic Certification (State of California) (Requires Option -SEI)
-MZN	Neutral Lug, Service Entrance, Non-Insulated Bonded to Enclosure
-PK	Terminal Blocks, Extra Remote Start
-PY	Output Contacts, Motor Space Heater, Externally Powered
-S	Tropicalization
-SEI	Marking, Seismic Certified (In accordance with IBC)
-USBX	Data Port, External USB
-ZPA	Scheduled Service Message (When factory programmed or programmed by Firetrol representative during start-up)
-ZPM	Data Port, Serial Modbus RTU Over 2-wire or 4-wire RS485
-ZPN	Data Port, Serial Modbus RTU Over Ethernet TCP/IP
-XCR	Export Packaging (Wooden Crating to Conform to IPPC Standards)

TRANSFER SWITCH OPTIONS

Option	Description
-BX	Contacts for Remote Indication, Second Source Phase Failure/Phase Reversal
-EC	Extra Contacts for Remote Indication, Transfer Switch Position

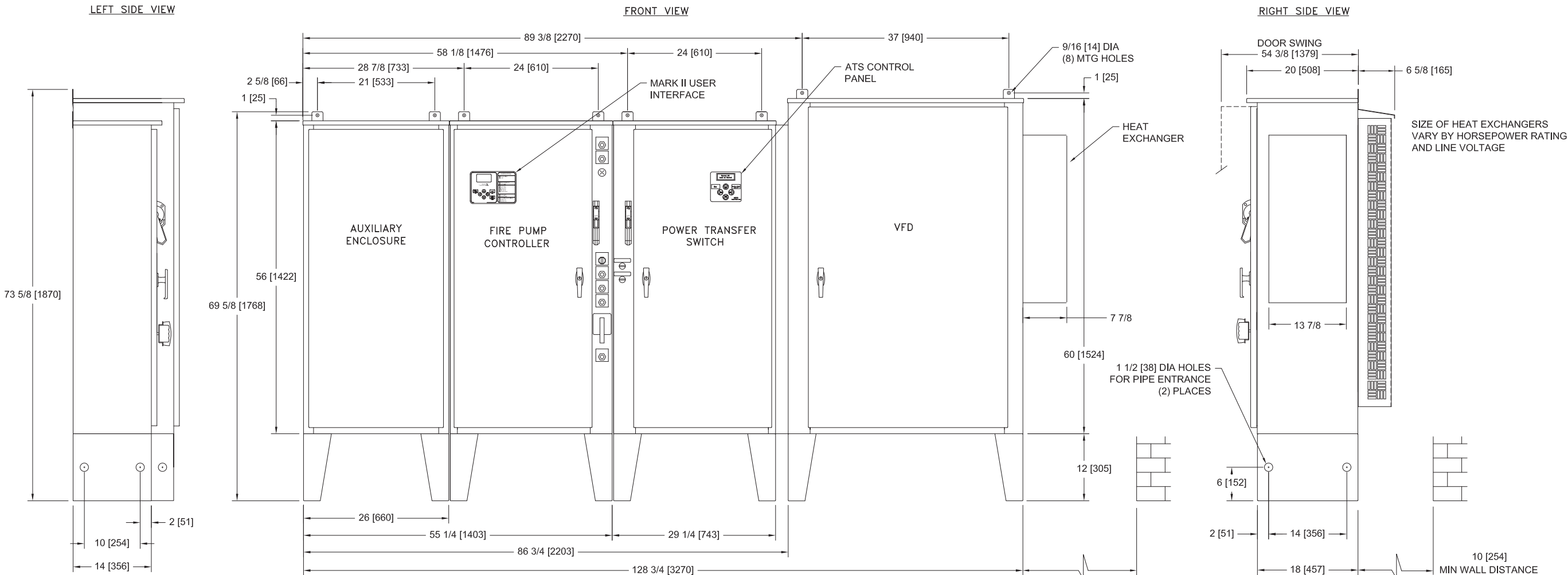
Firetrol, Inc.

3412 Apex Peakway
Apex, North Carolina 27502
P +1 919 460 5200
F +1 919 460 5250
www.firetrol.com

While every precaution has been taken to ensure accuracy and completeness herein, Firetrol, Inc. assumes no responsibility, and disclaims all liability, for damages resulting from use of this information or for any errors or omissions. Specifications and drawings are subject to change without notice. ©2019 Firetrol, Inc., All Rights Reserved.

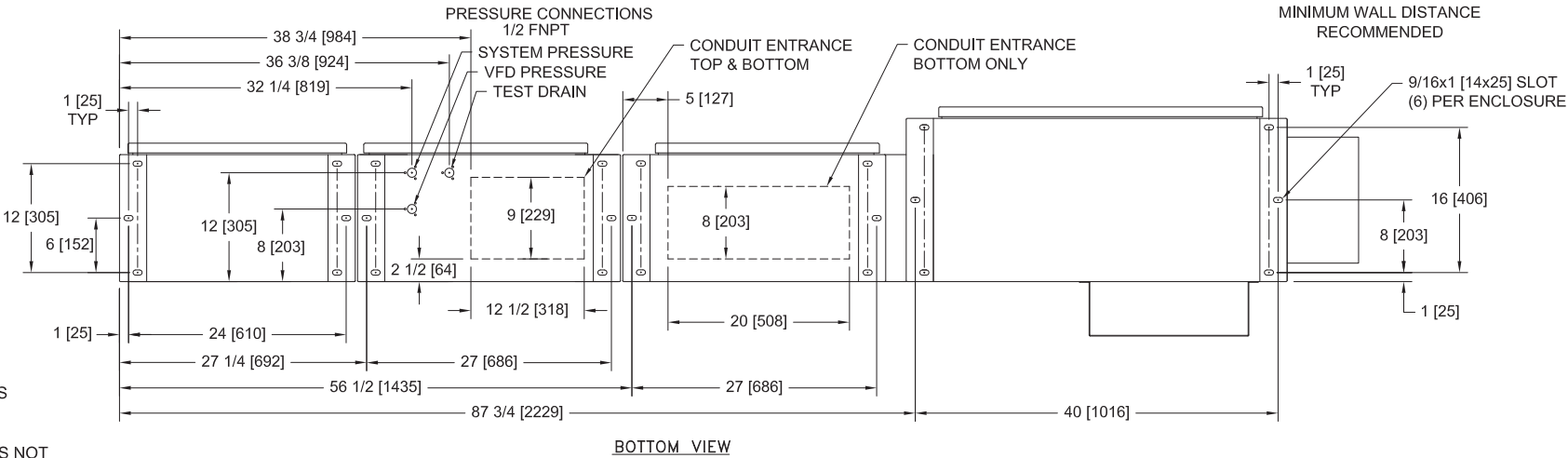


MarkIIx6 Electric Fire Pump Controllers – Variable Speed Starting with Solid State Soft Starting Bypass and Power Transfer Switch



NOTE:
TEST DRAIN CONNECTION MUST BE
PIPED TO WASTE DRAIN. FAILURE TO
CONNECT TO A FLOOR DRAIN WILL
RESULT IN UNSAFE CONDITIONS OF
STANDING WATER AROUND
CONTROLLER

- NOTES:
- DO NOT INSTALL IN AMBIENT TEMPERATURES ABOVE 40°C [104°F] OR BELOW 5°C [41°F]
 - ALL DIMENSIONS IN INCHES [MM]
 - FOR HORSEPOWER OR WITHSTAND RATINGS NOT LISTED IN THIS TABLE, REFER TO ED3130M-01
 - DRAWINGS USED FOR CONSTRUCTION PURPOSES MUST BE OBTAINED FROM FIRETROL OR THE LOCAL FIRETROL REPRESENTATIVE
 - ALL CONTROLLERS TO BE A MINIMUM NEMA TYPE 12
 - VFD COMPARTMENT SECTION IS SHIPPED SEPARATELY FROM FIRE PUMP SECTION.



STANDARD WITHSTAND RATINGS	
200-600V - 100,000 Amps RMS Sym.	
INTERMEDIATE WITHSTAND RATINGS	
200-600V - 150,000 Amps RMS Sym.	
HIGH WITHSTAND RATINGS	
200-600V - 200,000 Amps RMS Sym.	
LINE VOLTAGE	MOTOR HORSEPOWER
200-208	□ 60-100
220-240	□ 75-125
380-415	□ 100-150
440-480	□ 150-250
550-600	□ -

	SIZE B	BY	DATE
	DRAWN BY	JMW	5-15-19
	FINAL APPROVAL	CIR	5-15-19

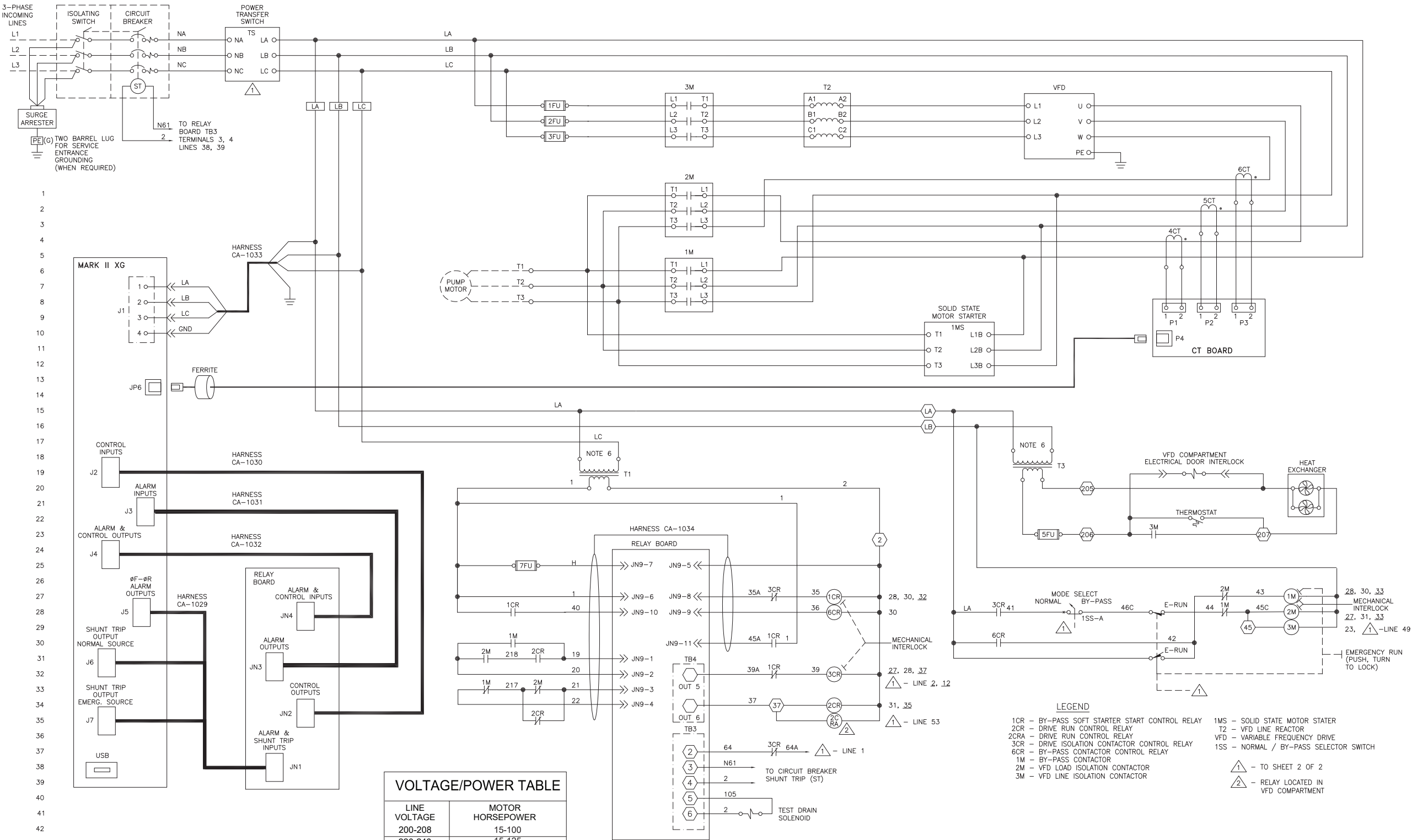


REVISED CHARTS		A	278060	JMW	CIR	5-15-19
REVISION DESCRIPTION		REV	ECN NO	BY	APP	DATE
ENCLOSURE DIMENSIONS		FTA3130M WITH FTA950		DRAWING NUMBER		
VFD ELECTRIC FIRE PUMP CONTROLLER WITH SOFT START BYPASS AND POWER TRANSFER SWITCH				DD3130M-14		
DWG REV	A	ECN NO	278060	SHEET 1 OF 1		

All rights reserved. The drawing and the information contained or depicted herein are the sole property of Firetrol, Inc. Copies are communicated to the recipient in strict confidence and may not be retransmitted, published, reproduced, copied or used in any manner, including as the basis for the manufacture or sale of any products, without the express prior written consent of Firetrol, Inc.



MarkIIx6 Electric Fire Pump Controllers - Variable Speed Starting with Soft Start Bypass and Power Transfer Switch



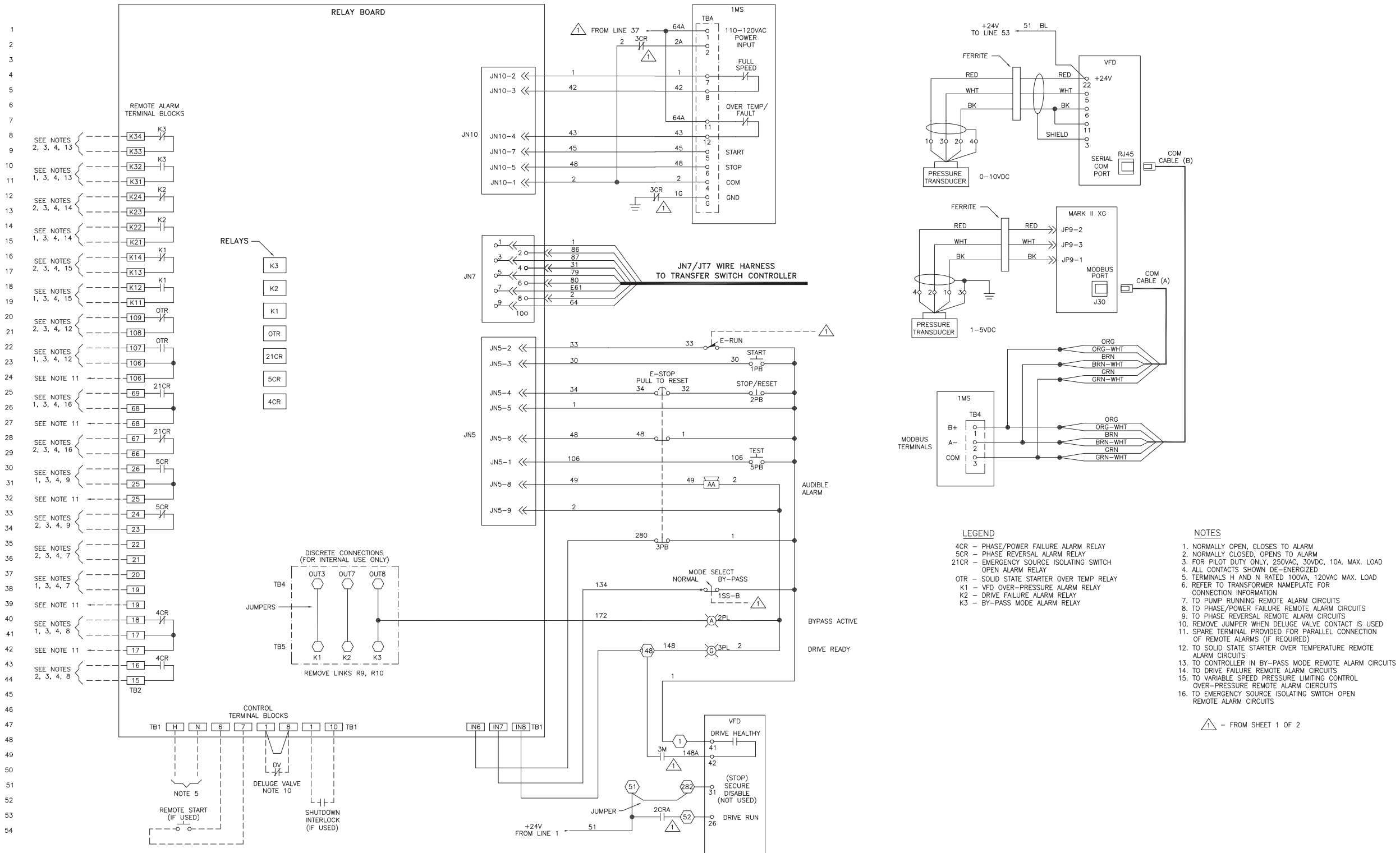
	SIZE	B	BY	DATE		REVISION DESCRIPTION		REV	ECN NO	BY	APP	DATE
	DRAWN BY	TEF	05/14/21			WIRING SCHEMATIC	FTA3130M WITH FTA950		DRAWING NUMBER			
	FINAL APPROVAL	TEF	05/14/21			VFD ELECTRIC FIRE PUMP CONTROLLER WITH SOFT START BY-PASS AND POWER TRANSFER SWITCH			WS3130M-55			
								SHEET 1 OF 2				



© Firetrol, Inc. Not for construction. Subject to change without notice.

All rights reserved. The drawing and the information contained or depicted herein are the sole property of Firetrol, Inc. Copies are communicated to the recipient in strict confidence and may not be retransmitted, published, reproduced, copied or used in any manner, including as the basis for the manufacture or sale of any products, without the express prior written consent of Firetrol, Inc.



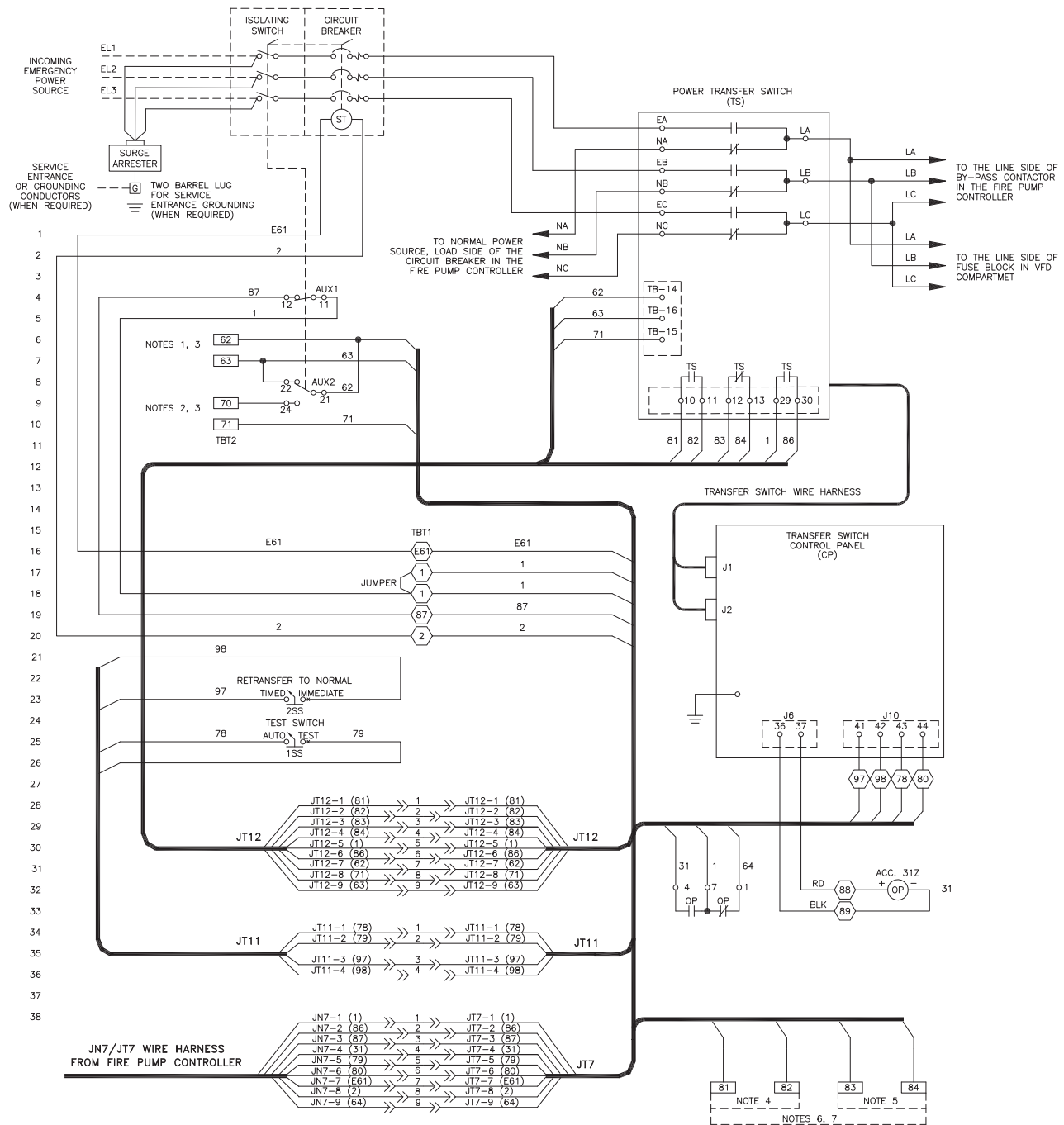
MarkIIx6 Electric Fire Pump Controllers - Variable Speed Starting with Soft Start Bypass and Power Transfer Switch



 THIRD ANGLE PROJECTION	SIZE	B	BY	DATE	 Firetrol, Inc. © Firetrol, Inc. Not for construction. Subject to change without notice.	REVISION DESCRIPTION		REV	ECN NO	BY	APP	DATE	
	DRAWN BY	TEF	05/14/21			WIRING SCHEMATIC	FTA3130M WITH FTA950	DRAWING NUMBER WS3130M-55					
	FINAL APPROVAL	TEF	05/14/21			VFD ELECTRIC FIRE PUMP CONTROLLER WITH SOFT START BY-PASS AND POWER TRANSFER SWITCH		DWG REV -		ECN NO -		SHEET 2 OF 2	
	All rights reserved. The drawing and the information contained or depicted herein are the sole property of Firetrol, Inc. Copies are communicated to the recipient in strict confidence and may not be retransmitted, published, reproduced, copied or used in any manner, including as the basis for the manufacture or sale of any products, without the express prior written consent of Firetrol, Inc.												



All rights reserved. The drawing and the information contained or depicted herein are the sole property of Firetrol, Inc. Copies are communicated to the recipient in strict confidence and may not be retransmitted, published, reproduced, copied or used in any manner, including as the basis for the manufacture or sale of any products, without the express prior written consent of Firetrol, Inc.

Power Transfer Switch For Use With FTA3100 Series VFD Electric Fire Pump Controllers



VOLTAGE/POWER TABLE

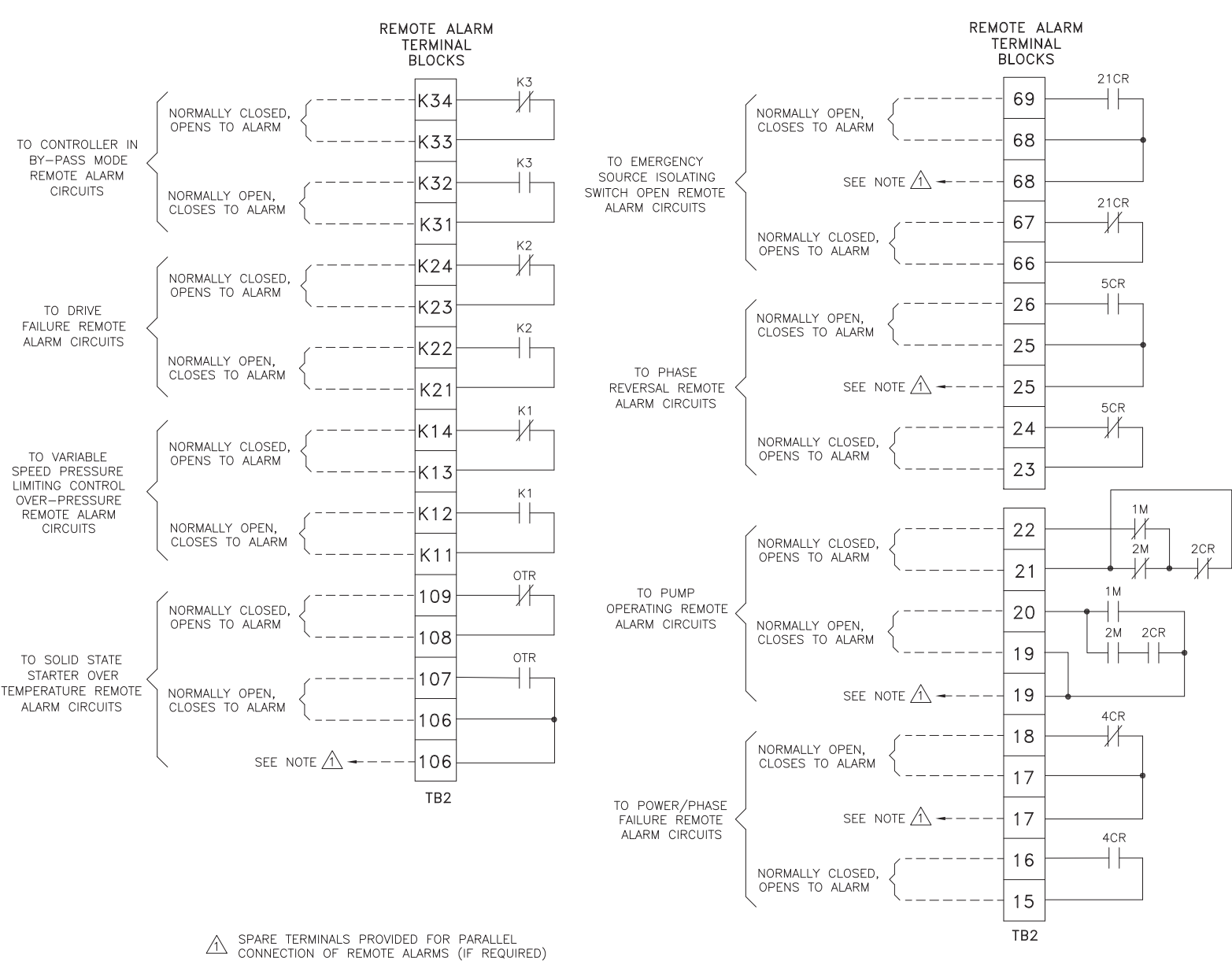
LINE VOLTAGE	MOTOR HORSEPOWER
200-208	15-100
220-240	15-125
380-415	15-200
440-480	15-250
550-600	15-250

 THIRD ANGLE PROJECTION	SIZE A	BY	DATE	 Firetrol, Inc. © Firetrol, Inc. Not for construction. Subject to change without notice.	REVISION DESCRIPTION		REV	ECN NO	BY	APP	DATE	
	DRAWN BY	TEF	05/14/21		WIRING SCHEMATIC		FTA950		DRAWING NUMBER WS950-56			
	FINAL APPROVAL	TEF	05/14/21		FIRE PUMP POWER TRANSFER SWITCH FOR GEN-SET AND SECOND UTILITY POWER SOURCE FOR FTA3100 SERIES VFD's		DWG REV -		ECN NO -		SHEET 1 OF 1	

All rights reserved. The drawing and the information contained or depicted herein are the sole property of Firetrol, Inc. Copies are communicated to the recipient in strict confidence and may not be retransmitted, published, reproduced, copied or used in any manner, including as the basis for the manufacture or sale of any products, without the express prior written consent of Firetrol, Inc.



MarkIIx6 Electric Fire Pump Controllers - Variable Speed Starting with Soft Start Bypass and Power Transfer Switch



⚠ SPARE TERMINALS PROVIDED FOR PARALLEL CONNECTION OF REMOTE ALARMS (IF REQUIRED)

NOTE: TERMINALS FOR CUSTOMER CONNECTIONS REQUIRE 3.5MM SLOTTED SCREW DRIVER

TERMINAL TIGHTENING TORQUE		
TERMINAL TYPE	WIRE SIZE	TIGHTENING TORQUE
CONTROL AND ALARM TERMINALS TB1, TB2	#14-12 AWG [2.5-4 MM ²]	5.6 lb-in [.6 Nm]

-USE COPPER CONDUCTORS ONLY-

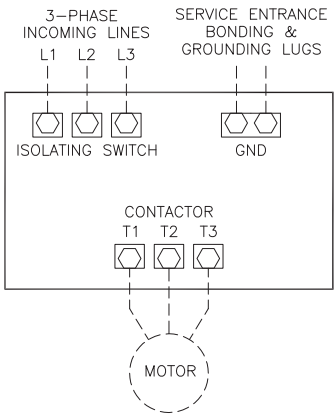
-NOTE-
ALARM CONTACT
RATING PILOT DUTY
250 VAC, 30 VDC
10 A. MAX. LOAD

PRESSURE SYSTEM
CONNECTION
1/2" FNPT

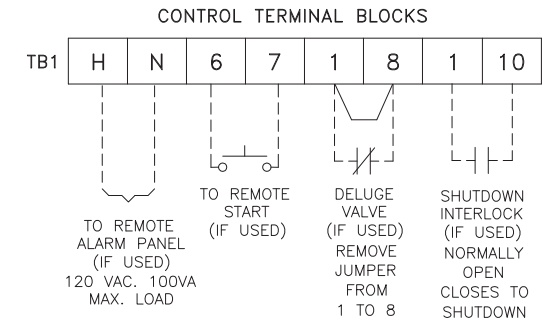
MAXIMUM MOTOR HORSEPOWER						WIRE SIZE (CU) PER PHASE	WIRE SIZE SERVICE ENTRANCE GROUND LUG (CU)
200V	208V	220-240V	380-415V	440-480V	550-600V		
20	20	25	40	50	60	(1) #14 AWG-#1/0 AWG (1) 2.5 MM ² -50 MM ²	(2) #14 AWG-#2/0 AWG (2) 2.5 MM ² -70 MM ²
40	40	40	75	100	125	(1) #4 AWG-300 kcmil (1) 25 MM ² -150 MM ²	(2) #14 AWG-#2/0 AWG (2) 2.5 MM ² -70 MM ²
60	60	60	100	150	150	(1) #4 AWG-300 kcmil (1) 25 MM ² -150 MM ²	(2) #6 AWG-250 kcmil (2) 16 MM ² -120 MM ²
100	100	100	150	250	300	(1) 250 kcmil-500 kcmil (1) 120 MM ² -240 MM ²	(2) #6 AWG-250 kcmil (2) 16 MM ² -120 MM ²
---	125	125	200	---	---	(2) #3/0 AWG-250 kcmil (2) 95 MM ² -120 MM ²	(2) #6 AWG-250 kcmil (2) 16 MM ² -120 MM ²
200	200	250	350	500	---	(3) #2/0 AWG-400 kcmil (3) 70 MM ² -200 MM ²	(2) #6 AWG-250 kcmil (2) 16 MM ² -120 MM ²
250	250	300	500	600	---	(4) #4/0 AWG-500 kcmil (4) 100 MM ² -240 MM ²	(2) #6 AWG-250 kcmil (2) 16 MM ² -120 MM ²



MAXIMUM MOTOR HORSEPOWER						WIRE SIZE (CU) PER PHASE
200V	208V	220-240V	380-415V	440-480V	550-600V	
30	30	40	60	75	100	(1) #6 AWG-#2/0 AWG (1) 16 MM ² -70 MM ²
50	50	60	75	125	150	(1) #6 AWG-250 kcmil (1) 16 MM ² -120 MM ²
75	75	100	150	200	250	(1) #4 AWG-400 kcmil (1) 25 MM ² -200 MM ²
100	100	---	---	250	300	(2) #4 AWG-500 kcmil (2) 25 MM ² -240 MM ²
200	200	200	350	500	---	(2) 250 kcmil-500 kcmil (2) 120 MM ² -240 MM ²
250	250	300	500	600	---	(3) #2/0 AWG-500 kcmil (3) 70 MM ² -240 MM ²

- 1- FOR CORRECT WIRE SIZING, REFER TO NATIONAL ELECTRICAL CODE, NFPA 70.
2- WHEN REQUIRED BY AUTHORITY HAVING JURISDICTION.



- NOTES
- 1- Incoming line terminals are provided to accommodate wire sizes at 125% of motor full load current per NFPA 70, National Electrical Code, Table 430-250, Section 695.6(c), and Table 310-16, 75° rated Copper conductors.
- 2- Controller is phase rotation sensitive. Incoming lines L1, L2 and L3 must be in ABC, right hand rotation sequence for proper operation of the phase monitor.
- 3- Motor connections shown are typical. Since motor connections vary widely, refer to the motor connection diagram for specific wiring arrangement.



 THIRD ANGLE PROJECTION	SIZE	B	BY	DATE	 Firetrol, Inc. © Firetrol, Inc. Not for construction. Subject to change without notice.	REVISION DESCRIPTION		REV	ECN NO	BY	APP	DATE	
	DRAWN BY	TEF	05/14/21	FIELD CONNECTIONS		FTA3130M WITH FTA950	DRAWING NUMBER FC3130M-55						
	FINAL APPROVAL	TEF	05/14/21	VFD ELECTRIC FIRE PUMP CONTROLLER WITH SOFT START BY-PASS AND POWER TRANSFER SWITCH		DWG REV	-	ECN NO	-	SHEET 1 OF 1			
	All rights reserved. The drawing and the information contained or depicted herein are the sole property of Firetrol, Inc. Copies are communicated to the recipient in strict confidence and may not be retransmitted, published, reproduced, copied or used in any manner, including as the basis for the manufacture or sale of any products, without the express prior written consent of Firetrol, Inc.												