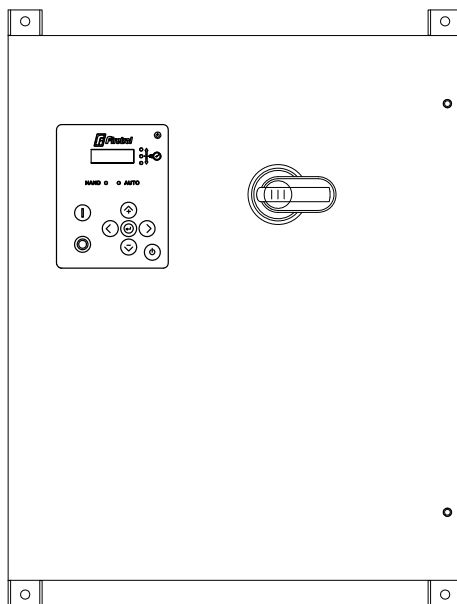


Project Information



(DRAWINGS INCLUDED IN THIS PACKAGE ARE FOR STANDARD CONTROLLERS. ACTUAL "AS BUILT" DRAWINGS MAY DIFFER FROM THOSE SEEN HERE).

Firetrol, Inc.

3412 Apex Peakway
Apex, North Carolina 27502
P 919 460-5200
F 919 460 5250
www.firetrol.com

While every precaution has been taken to ensure accuracy and completeness herein, Firetrol, Inc. assumes no responsibility, and disclaims all liability, for damages resulting from use of this information or for any errors or omissions. Specifications and drawings are subject to change without notice. ©2021 Firetrol, Inc., All Rights Reserved.

Firetrol Jockey Pump Controller

FTA560E – Full Voltage Starting Specifications

1.0 Jockey Pump Controller

The auxiliary jockey pump controller, if required and specified on the plans and specifications, shall be factory assembled, wired, and tested and specifically designed for this type of service. This controller shall be of the same manufacturer as the main fire pump controller.

1.1 Standards, Listings & Approvals

The controller shall conform to all the requirements of the latest editions of:

- NFPA 70, *National Electrical Code*.

The controller shall be listed by:

- Underwriters Laboratories, Inc., in accordance with UL508A, *Standard for Industrial Controls*
- Canadian Standards Association CSA-C22.2, *Standard for Industrial Control Equipment* (cUL)

1.2 Enclosure

The controller components shall be housed in a NEMA Type 2 (IEC IP22) painted steel, wall mounted enclosure (UL50E Construction).

1.3 Withstand Ratings (Short Circuit Current Ratings w/Circuit Breaker)

The jockey shall have standard short circuit current ratings of:

65kA @ 480 Volts Max. (3-Phase)

14kA @ 600 Volts (3-Phase)

5kA @ 240 Volts Max. (1-Phase)

1.4 Construction

The jockey pump controller shall be full voltage starting. The controller shall incorporate a circuit breaker and horsepower rated motor starter, control circuit transformer with 24VAC secondary and 200-600V multi-tap primary, main disconnect switch, and a 0-600 psi (0-42 bar) solid state pressure transducer.

1.5 Operator Interface

The jockey pump controller shall feature an operator interface with user keypad. The interface shall feature a 4 digit digital display. LED indication of pressure above stop setting (Green), pressure between stop and start settings (Yellow), and pressure below the start setting (Red). LED indication of motor run (manual start and automatic start). Start/Stop and Off/Automatic push-buttons. User settings such as start/stop pressure settings, timer settings and units of measure shall be programmable from the user interface without opening the enclosure door.

1.6 Solid State Pressure Transducer

The controller shall be supplied with a solid state pressure transducer with a range of 0-600 psi (0-42 bar) ± 1 psi. The solid state pressure switch shall be used for both display of the system pressure and control of the jockey pump controller. Systems using analog pressure devices or mercury switches for operational control will not be accepted. The START, STOP and SYSTEM PRESSURE shall be digitally displayed and adjustable through the user interface. The pressure transducer shall be mounted inside the controller to prevent accidental damage. The pressure transducer shall be directly pipe mounted to a bulkhead pipe coupling without any other supporting members. Field connections shall be made externally at the controller coupling to prevent distortion of the pressure switch element and mechanism.

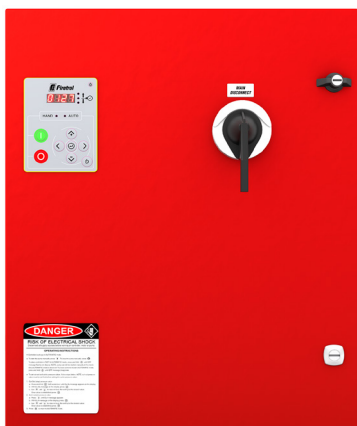
1.7 Controller Operation

A digitally set On Delay (Sequential Start) timer shall be provided as standard. The controller shall include a Minimum Run Timer to allow the motor to run for a set period of timer after starting. The timer shall be programmable through the user interface. The disconnect switch shall be mechanically interlocked so that the enclosure door cannot be opened with the handle in the ON position except by a hidden tool operated defeater mechanism. The disconnect switch shall be capable of being padlocked in the OFF position for installation and maintenance safety.

1.8 Manufacturer

The controller shall be a Firetrol brand.

Jockey Pump Controllers



Description—Firetrol® FTA560E Jockey Pump Controllers are intended for use with fire pump systems. They are used for pressure maintenance in fire pump installations to prevent unnecessary operation of the main fire pump.

Approvals—Firetrol jockey pump controllers are listed by Underwriters' Laboratories, Inc., in accordance with UL508A, *Standard for Industrial Controls*, and CSA, *Standard for Industrial Control Equipment*. They are built to meet or exceed the requirements of the approving authorities as well as NEMA and the latest edition NFPA 70, *National Electrical Code*.

Standard Features—The following are included as standard with each controller:

- NEMA Type 2 (IEC IP22) Painted Steel Enclosure
- Circuit Breaker
- Horsepower rated motor starter
- Suitable for use as service equipment
- OFF-AUTO push-buttons
- Minimum run timer
- On-Delay timer
- Control circuit transformer with 24VAC secondary
- 0-600 psi (0-42 bar) solid state pressure transducer
- Visual Indication, Controller in AUTO

- Door mounted pressure display/user interface.
- LED indication for pressure above stop setting (green), pressure between start and stop setting (yellow), and pressure below start setting (red).
- Start and Stop push-buttons
- Rotary style door mounted disconnect handle with door interlock

NOTE: FTA560E Jockey Pump Controllers are available as standard in the voltage/horsepower combinations shown below. For other combinations and options, please consult your Firetrol representative or the factory.

VOLTAGE 3-PHASE (50/60 Hertz) Rating		MAX HP	Short Circuit Current
-H	200 - 208V	25	65kA
-A	220 - 240V	30	65kA
-F	380 - 415V	40	65kA
-B	440 - 480V	50	65kA
-C	550 - 600V	50	14kA

VOLTAGE 1-PHASE* (50/60 Hertz) Rating		MAX HP	Short Circuit Current
-D	110-120V	5	5kA
-T	200-208V	15	5kA
-E	220-240V	15	5kA

* Single phase units supplied standard with fusible disconnect switch and fuses

NOTE: Firetrol Brand Jockey Pump controllers DO NOT CONTAIN MERCURY filled pressure switches.

For Model # Information and Options & Modifications see Publication SD560E-01

Firetrol, Inc.

3412 Apex Peakway
Apex, North Carolina 27502
P +1 919 460 5200
F +1 919 460 5250
www.firetrol.com

While every precaution has been taken to ensure accuracy and completeness herein, Firetrol, Inc. assumes no responsibility, and disclaims all liability, for damages resulting from use of this information or for any errors or omissions. Specifications and drawings are subject to change without notice. ©2021 Firetrol, Inc., All Rights Reserved.

Jockey Pump Controllers

FTA560E JOCKEY PUMP CONTROLLERS

FTA560E-A A - - - (Example: FTA560E-AA015B-T-BY)

FTA NUMBER
FTA560E

TIMER OPTION
-A With Programmable
Running Period Timer

MOTOR CURRENT PROTECTION
-A Circuit Breaker
Suitable for Use as Service Equipment
Short Circuit Current Rating
200-480V - 65kA
550-600V - 14kA
-F Fusible Disconnect Switch w/
Fuses
Suitable for Use as Service Equipment
Short Circuit Current Rating
200-600V - 100kA (3-Phase)
110-240V - 5kA (1-Phase)

HORSEPOWER (KW)

014 - 1/4 HP (.18)	004 - 4 HP (3)
013 - 1/3 HP (.23)	005 - 5 HP (3.7)
012 - 1/2 HP (.37)	006 - 5 1/2 HP (4)
034 - 3/4 HP (.56)	007 - 7 1/2 HP (5.5)
001 - 1 HP (.75)	010 - 10 HP (7.5)
011 - 1 1/2 HP (1.1)	015 - 15 HP (11)
002 - 2 HP (1.5)	020 - 20 HP (15)
003 - 3 HP (2.2)	025 - 25 HP (19)
	030 - 30 HP (22)
	040 - 40 HP (29)
	050 - 50 HP (37)

(See Voltage Selection for Maximum
HP/Voltage Combinations)

OPTIONS & MODIFICATIONS
(See below)

VOLTAGE 3-PHASE (50/60 Hertz)	MAX HP
-H 200 - 208V	25
-A 220 - 240V	30
-F 380 - 415V WYE	40
-B 440 - 480V WYE	50
-C 550 - 600V WYE	50
VOLTAGE 1-PHASE *	MAX HP
-D 110-120 Volts	5
-T 200-208 Volts	15
-E 220-240 Volts	15

* Single phase units supplied
standard with Fusible Disconnect
Switch & Fuses
(Select Model FTA560E-AF....)

NOTE: For requirements not listed here
please contact a Firetrol represen-
tative or the factory.

Options and Modifications

Option	PRESSURE TRANSDUCERS Description
---	Wetted Parts Including Pressure Sensor, 600 PSI (42 bar), Fresh Water
-D	Wetted Parts Including Pressure Sensor, 600 PSI (42 bar), Sea Water

SPECIAL ENCLOSURES

Option	Description
---	Enclosure, NEMA Type 2 (IEC IP22), Painted Steel (Standard)
-E	Enclosure, NEMA Type 4 (IEC IP65), Painted Steel
-F	Enclosure, NEMA Type 4X (IEC IP66), #304 Stainless Steel, Brushed Finish
-FD	Enclosure, NEMA Type 4X (IEC IP66), #316 Stainless Steel, Brushed Finish
-FDB	Enclosure, NEMA Type 4X (IEC IP66), #316 Stainless Steel, Seam Welded, Brushed Finish
-FDP	Enclosure, NEMA Type 4X (IEC IP66), #316 Stainless Steel, Painted Finish
-FXP	Enclosure, NEMA Type 4X (IEC IP66), #304 Stainless Steel, Painted Finish
-G	Enclosure, NEMA Type 12 (IEC IP54), Painted Steel
-T	Enclosure, NEMA Type 3R (IEC IP24), Painted Steel

ANTI-CONDENSATION SPACE HEATERS (power source by others)

Option	Description
None	
-H	Space Heater, 120V Externally Powered with Circuit Breaker
-J	Space Heater, 120V Externally Powered with Circuit Breaker & Thermostat
-K	Space Heater, 120V Externally Powered with Circuit Breaker & Humidistat
-L	Space Heater, 240V Externally Powered with Circuit Breaker
-M	Space Heater, 240V Externally Powered with Circuit Breaker & Thermostat
-N	Space Heater, 240V Externally Powered with Circuit Breaker & Humidistat

HIGHER SHORT CIRCUIT CURRENT RATING

Option	Description
AF	Fusible Disconnect Switch with Fuses 200-600/3-100kA 110-240/1-5kA

ALARMS

Option	Description
-AC	Alarm Output Contacts, Pump Operating (1 Set)
-AG	Alarm, Audible/Visible, Reservoir Low
-AM	Alarm Output Contacts, Fail To Start
-AW	Alarm Output Contacts, Reservoir Low (Requires Option -AG)
-BWI	Alarm Output Contacts/Visual Indication, Phase Failure/Phase Reversal
-BY	Alarm Output Contacts, Pump Overload
-EFI	Alarm Output Contacts, Controller Not In Auto (1 set)
-HV	Alarm, Audible
-KH	Alarm Output Contacts, Common Alarm
-PE	Alarm Output Contacts, Low System Pressure

MISCELLANEOUS

Option	Description
-AST	Input Terminals, Automatic Start
-NZ	Input Terminals, Shutdown Interlock
-S	Tropicalization
-ZPJ1	Serial Modbus TCP/IP Ethernet, Includes MarkIII+
-ZPJ2	Serial Modbus RTU RS485, Includes MarkIII+

*Export Packaging available for additional cost
 NOTE: For requirements not listed here, please
 contact your Firetrol representative or
 the factory.

Firetrol, Inc.

3412 Apex Peakway
 Apex, North Carolina 27502
 P +1 919 460 5200
 F +1 919 460 5250
www.firetrol.com

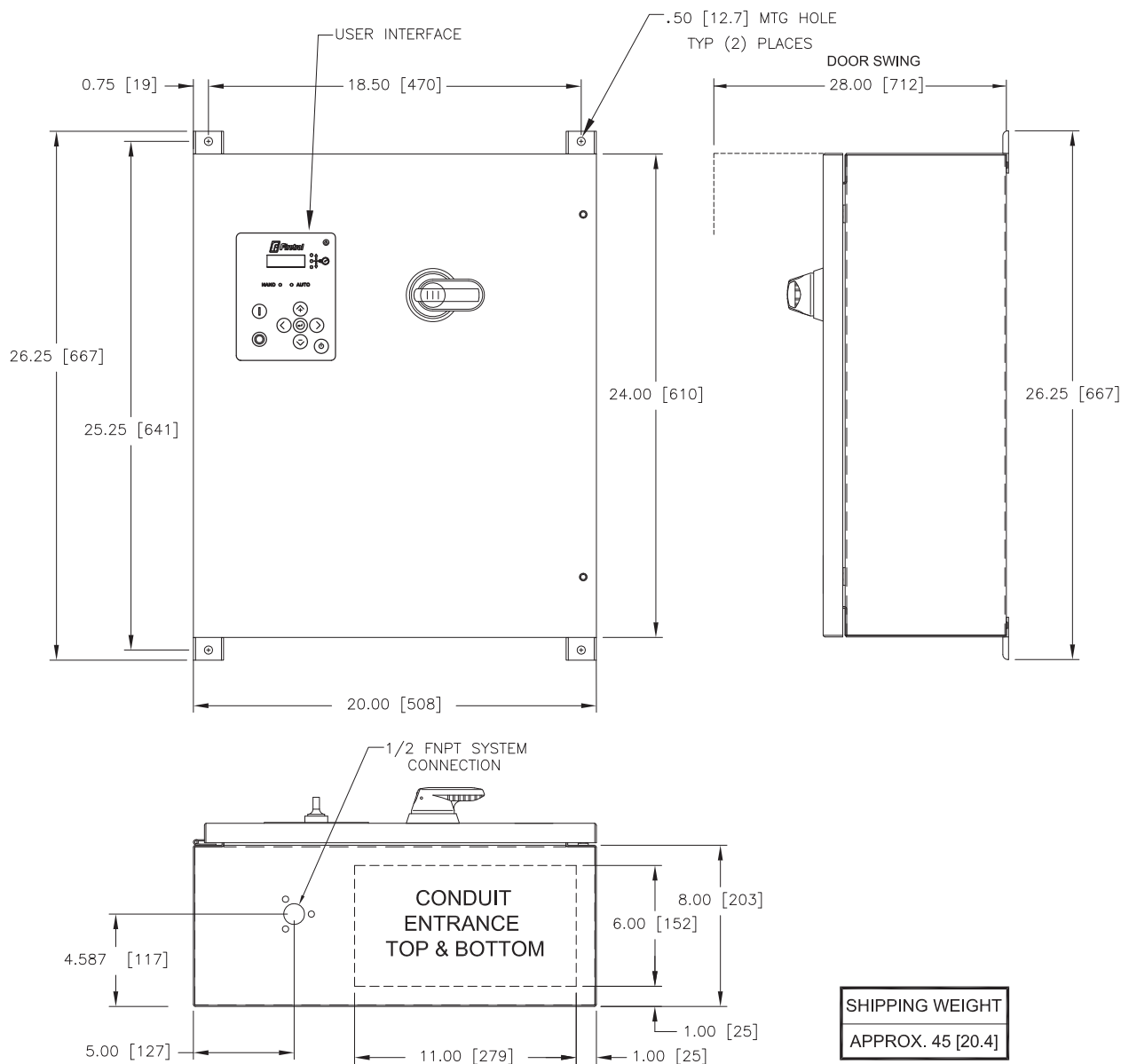
While every precaution has been taken to ensure accuracy and completeness herein, Firetrol, Inc. assumes no responsibility, and disclaims all liability, for damages resulting from use of this information or for any errors or omissions. Specifications and drawings are subject to change without notice. ©2021 Firetrol, Inc., All Rights Reserved.

Publication SD560E-01 Rev. B

Dimensions and Shipping Weight



FTA560E



ALL DIMENSIONS - INCHES [MM]
SHIPPING WEIGHT - POUNDS [KG]

NOTES:

FOR ADDITIONAL HORSEPOWER RATINGS CONSULT FACTORY.

DIMENSIONS SHOWN ON THIS DRAWING ARE APPLICABLE FOR NEMA TYPES 2 - 3R - 4 - 4X - 12

USE WATERTIGHT CONDUIT AND CONNECTOR ONLY.

MAXIMUM MOTOR HORSEPOWER

200-208V	220-240V	380-415V	440-480V	550-600V
25	30	40	50	50

SIZE	A	BY	DATE	REVISION DESCRIPTION	REV	ECN NO	BY	APP	DATE
DRAWN BY	TEF	10/26/21		DIMENSIONS AND SHIPPING WEIGHT	FTA560E				
FINAL APPROVAL	TEF	10/26/21		FTA560E JOCKEY PUMP CONTROLLER					

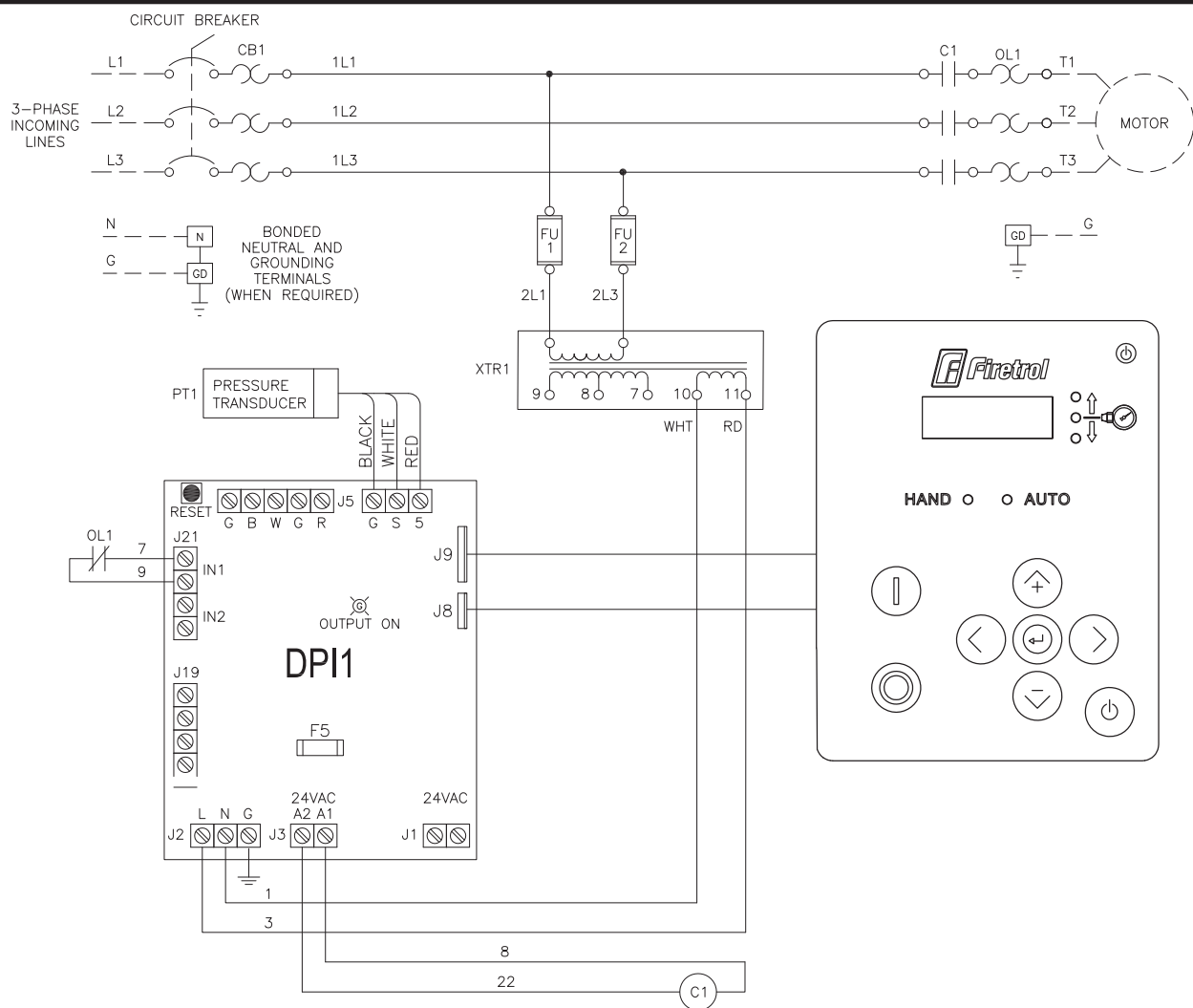


© Firetrol, Inc. Not for construction.
Subject to change without notice.

DRAWING NUMBER
DD560-05

DWG REV - ECN NO - SHEET 1 OF 1

All rights reserved. The drawing and the information contained or depicted herein are the sole property of Firetrol, Inc. Copies are communicated to the recipient in strict confidence and may not be retransmitted, published, reproduced, copied or used in any manner, including as the basis for the manufacture or sale of any products, without the express prior written consent of Firetrol, Inc.



LINE TERMINALS—WIRE CAPACITY (CU) ⁽¹⁾

MAXIMUM MOTOR HORSEPOWER					WIRE SIZE (CU) PER PHASE
200–208V	220–240V	380–415V	440–480V	550–600V	
25	30	40	50	50	(1) #14 AWG—#1 AWG (1) 2.5 MM ² —42 MM ²

MOTOR TERMINALS—WIRE CAPACITY (CU) ⁽¹⁾

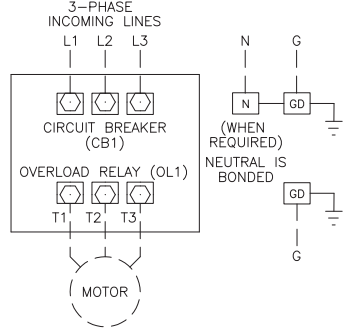
MAXIMUM MOTOR HORSEPOWER					WIRE SIZE (CU) PER PHASE
200–208V	220–240V	380–415V	440–480V	550–600V	
7.5	10	15	20	25	(1) #14 AWG—#8 AWG (1) 2.5 MM ² —10 MM ²
20	20	30	40	50	(1) #14 AWG—#2 AWG (1) 2.5 MM ² —35 MM ²
25	30	40	50	—	(1) #10 AWG—#1 AWG (1) 4 MM ² —42 MM ²

⁽¹⁾ FOR CORRECT WIRE SIZING, REFER TO
NATIONAL ELECTRICAL CODE, NFPA 70.

NEUTRAL AND
GROUND TERMINALS
WIRE CAPACITY (CU)

#12 AWG—#2 AWG
4 MM²—35 MM²

PRESSURE SYSTEM
CONNECTION
1/2" FNPT



DRAWING FOR INFORMATION ONLY.
MANUFACTURER RESERVES THE RIGHT TO MODIFY THIS DRAWING WITHOUT NOTICE.
CONTACT MANUFACTURER FOR AS BUILT DRAWING.

THIRD ANGLE PROJECTION	SIZE	BY	DATE	REVISION DESCRIPTION		REV	ECN NO	BY	APP	DATE
	A	TEF	10/25/21	WIRING SCHEMATIC						
DRAWN BY				FTA560E		DRAWING NUMBER				
FINAL APPROVAL				FTA560E JOCKEY PUMP CONTROLLER		WS560-05				
						DWG REV	ECN NO	SHEET 1 OF 1		

All rights reserved. The drawing and the information contained or depicted herein are the sole property of Firetrol, Inc. Copies are communicated to the recipient in strict confidence and may not be retransmitted, published, reproduced, copied or used in any manner, including as the basis for the manufacture or sale of any products, without the express prior written consent of Firetrol, Inc.